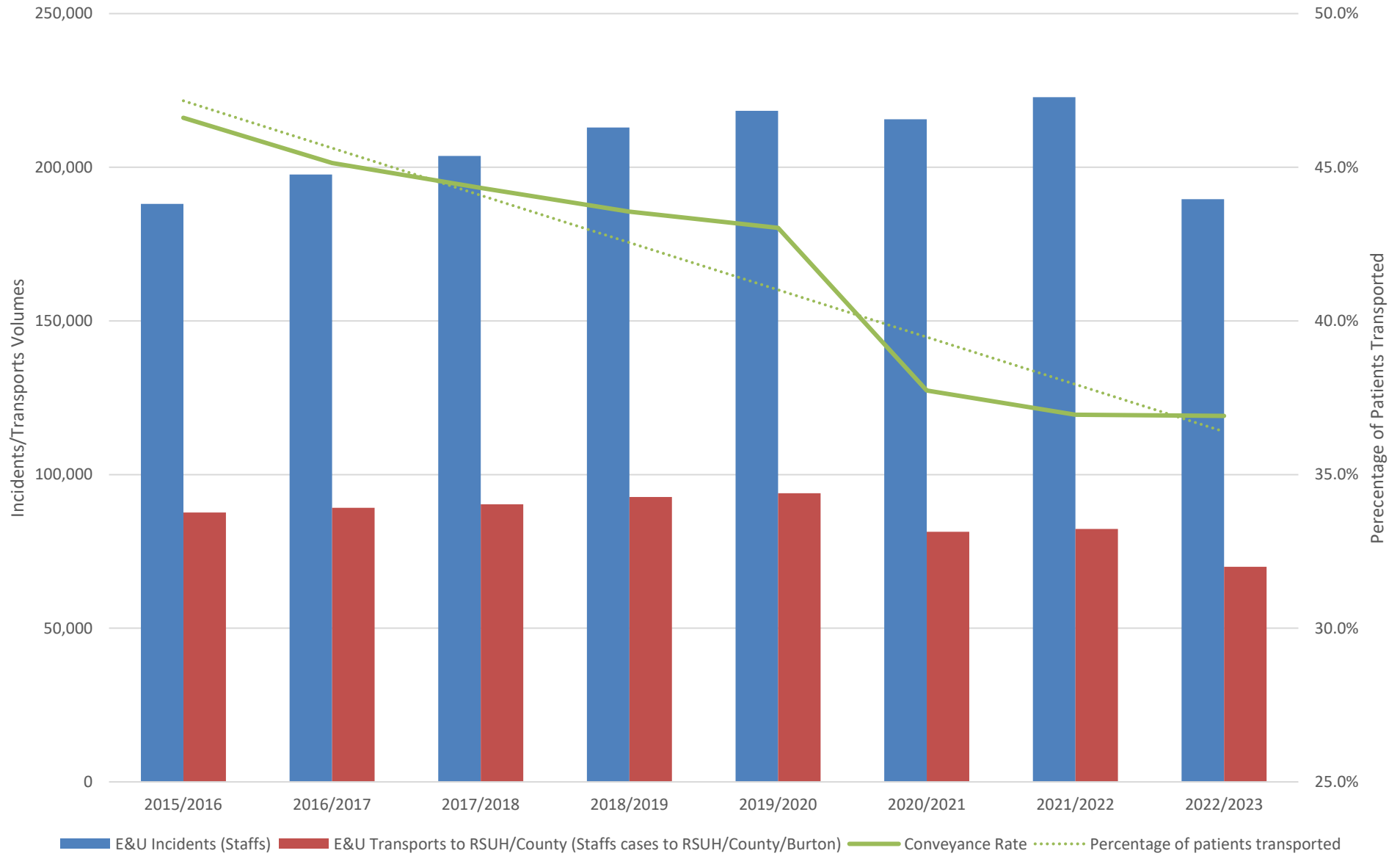




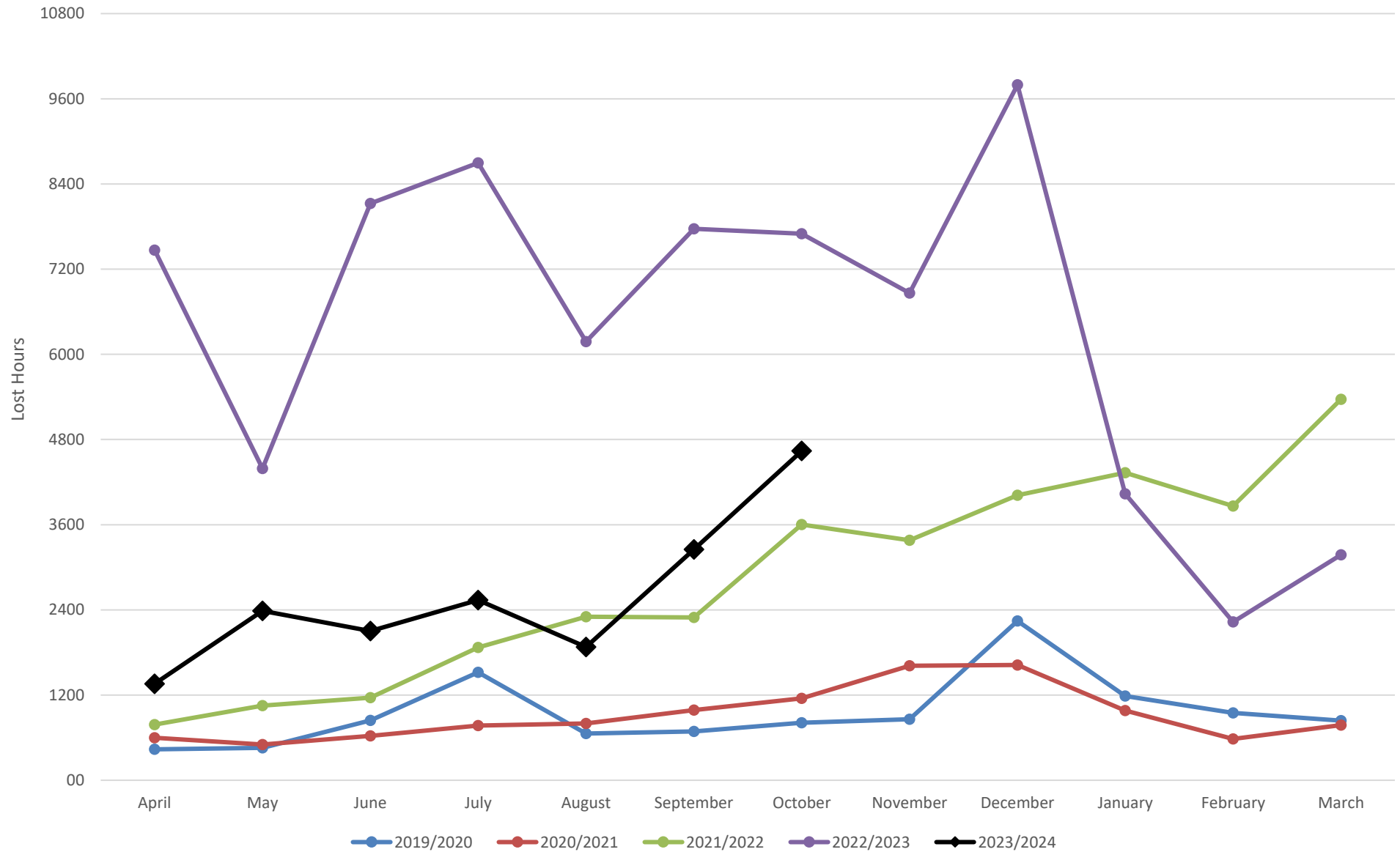
# Staffordshire&StokeOnTrentICS Demand,HospitalDelays &Performance

October 2023

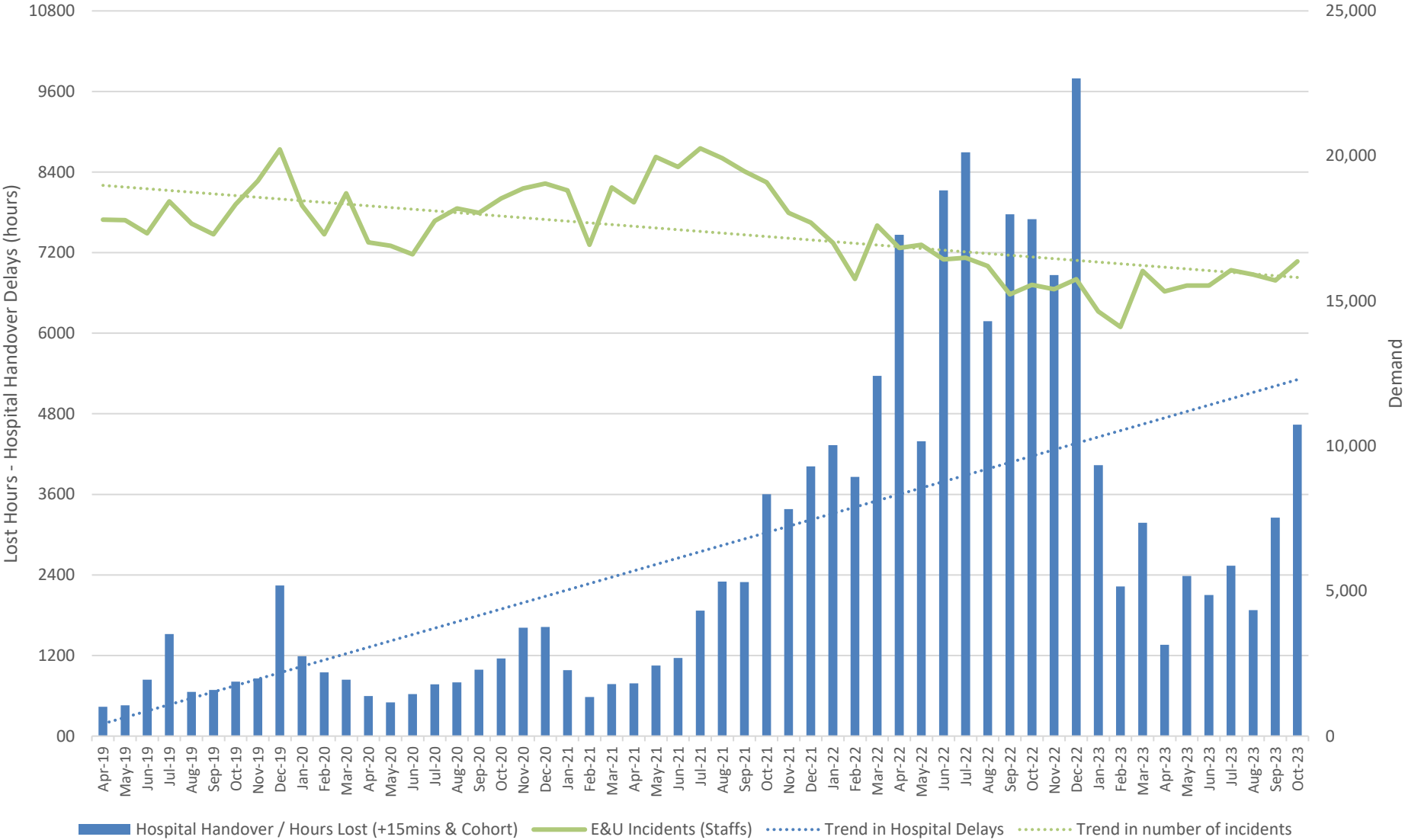
## Incidents, Transports & Conveyance Rate Year on Year



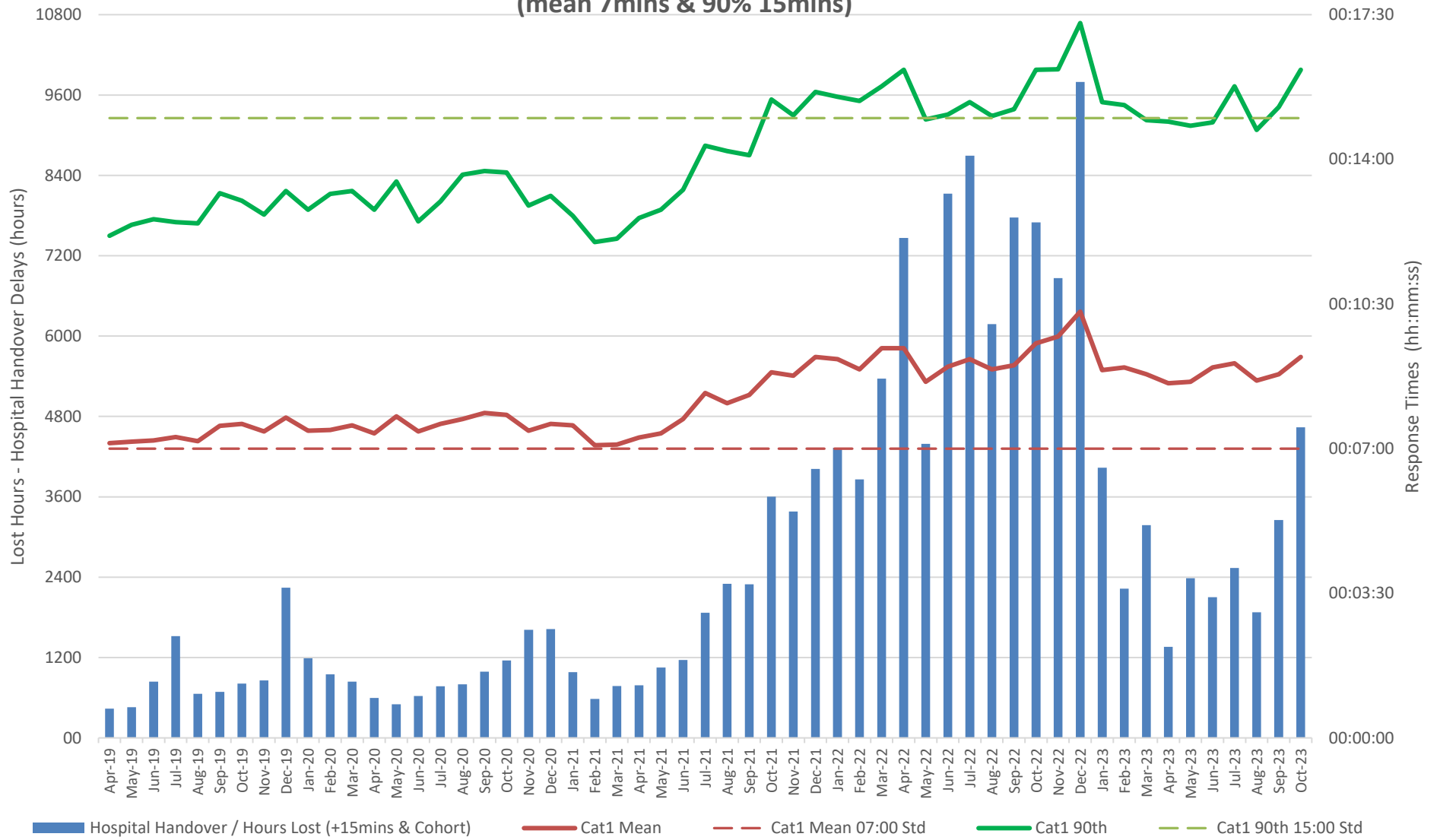
## Staffordshire Hospital Handover Delays >15mins (inc cohorting) - Total Hours by Month



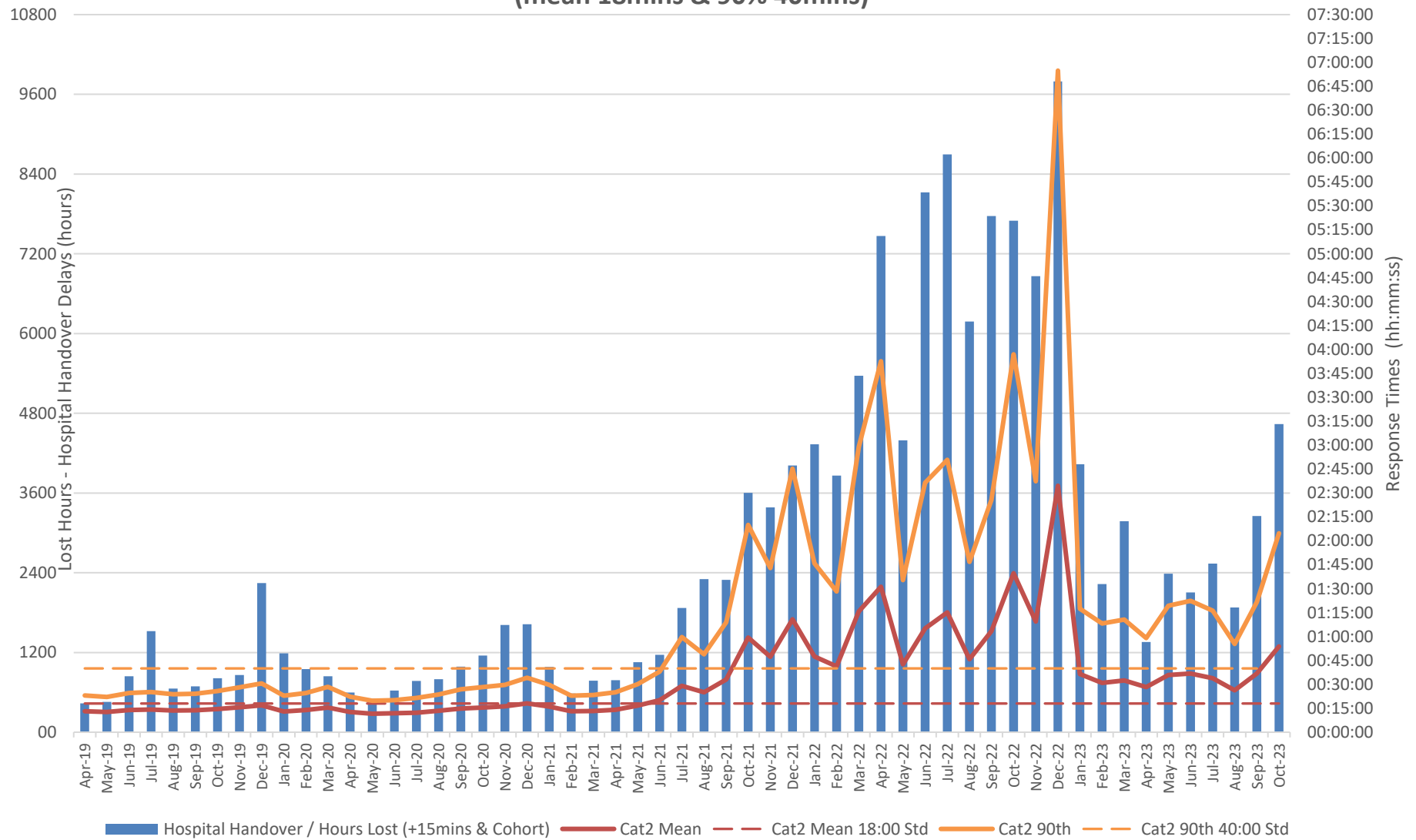
# Operational Demand & Handover Delays



## Hospital Handover Delays > 15mins and Cohorting vs Operational Performance Cat 1 (mean 7mins & 90% 15mins)



## Hospital Handover Delays > 15mins and Cohorting vs Operational Performance Cat 2 (mean 18mins & 90% 40mins)



## Hospital Handover Delays > 15mins and Cohorting vs Operational Performance Cat 3 (mean 60mins & 90% 120mins)

