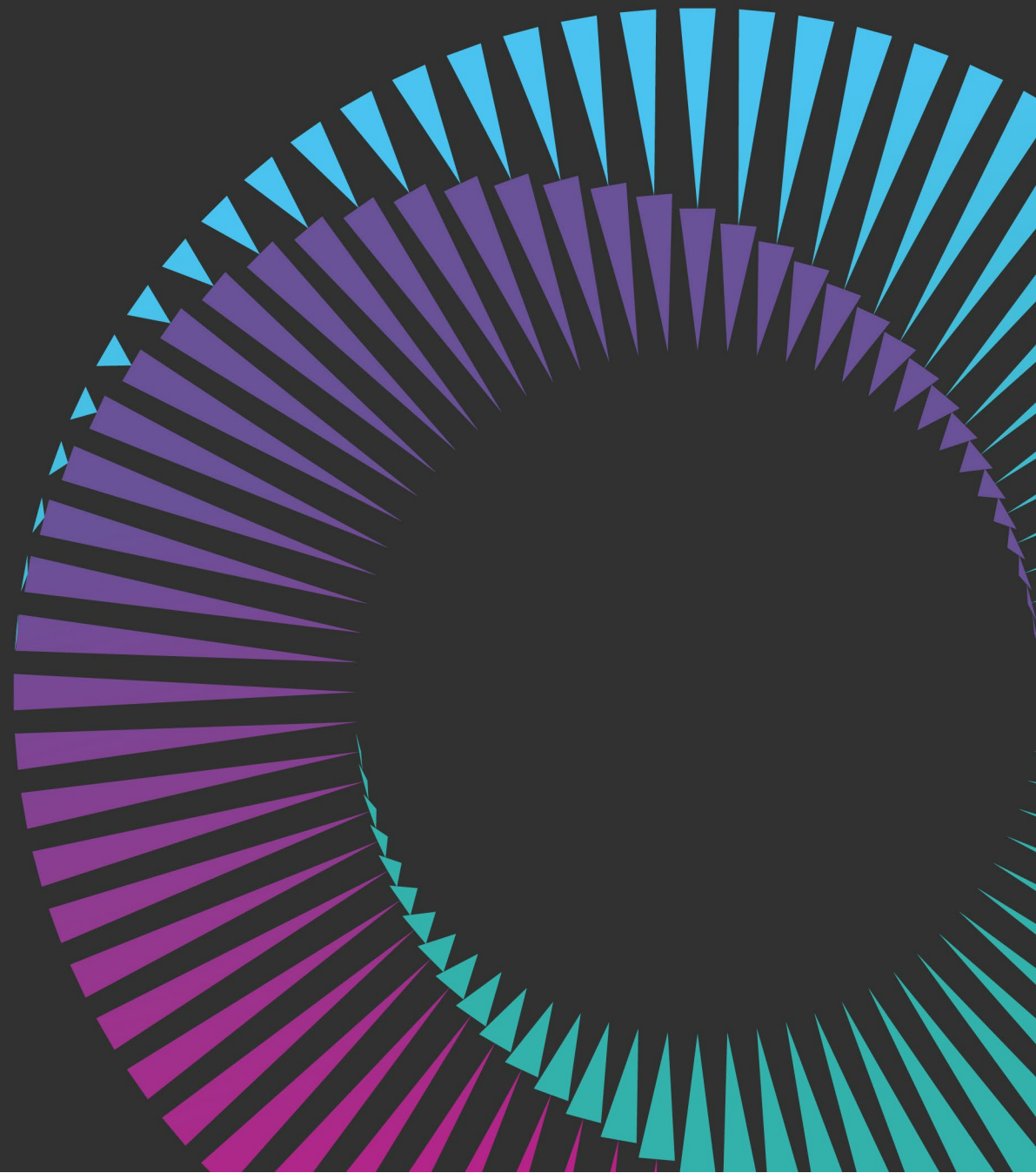


Acronyms

Staffordshire and Stoke-on-Trent



AI	Artificial Intelligence	A set of computing and data analysis techniques that together are used to accomplish tasks that would normally require intelligence if carried out by humans. AI is beginning to be used more widely in health and care, for example, in diagnostic services to help interpret images from CT and MRI scans.
A&E	Accident & Emergency	These services provide medical services for individuals who require urgent attention for illness or injury. Urgent care services treat accidents and illnesses that require urgent attention but are not life threatening. In the NHS, urgent and emergency care includes services such as accident and emergency departments, ambulance services, urgent treatment centres and NHS 111.
ADNS	Advanced Diploma in Nursing Studies (UK)	The advanced diplomas give more credits at level 3, therefore, to top up to degree level is faster, and whilst an advanced diploma requires AS/A2's, the number of UCAS points required for entry is usually lower than those required for a degree. HEIs usually offer the advanced diploma and degree.
AED	Automated External Defibrillator	Used to help those experiencing sudden cardiac arrest. It's a sophisticated, yet easy-to-use, medical device that can analyse the heart's rhythm and, if necessary, deliver an electrical shock, or defibrillation, to help the heart re-establish an effective rhythm.
AF	Atrial Fibrillation	Atrial fibrillation (AF) is an irregular and often very rapid heart rhythm (arrhythmia) that can lead to blood clots in the heart. AF increases the risk of stroke, heart failure and other heart-related complications.
AHP	Allied Health Professional	A diverse group of clinicians who deliver high-quality care to patients and clients across a wide range of care pathways and in a variety of different settings. They play an important role in modern health and social care services.
ALAN	Adult Literacy and Numeracy	Adult literacy and numeracy (sometimes known as Skills for Life) support the development of the basic skills of speaking, listening, reading, writing, ICT and numeracy. The adult literacy and numeracy standards provide the underpinning knowledge, techniques and understanding for the equivalent key or functional skill.
ALBs	Arm's Length Bodies	Arm's-length body (ALB) is a term commonly used to cover a wide range of public bodies, including non-ministerial

		departments, non-departmental public bodies, executive agencies and other bodies, such as public corporations.
ALE	Auditors Local Evaluation	Audits provide local trusts with individual benchmarked reports on their compliance and performance, feeding back comparative findings to help participants identify necessary improvements for patients.
ALOS	Average Length of Stay	Refers to the average number of days that a patient spends in hospital. It is generally measured by dividing the total number of days stayed by all inpatients during a year by the number of admissions or discharges.
ANNP	Advanced Neonatal Nurse Practitioner	Advanced Neonatal Nurse Practitioner is a degree level qualification building on existing neonatal clinical experience and skills, taking on greater responsibility and make more complex clinical decisions, apply diagnostic and clinical decision-making skills to your professional practice.
AO	Accountable Officer	The Accountable Officer is responsible for ensuring that the CCG fulfils its duties to exercise its functions effectively, efficiently, and economically thus ensuring improvement in the quality of services and the health of the local population whilst maintaining value for money.
APMS	Alternative Provider Medical Services	One of three different types of GP contracts, the APMS contract offers greater flexibility than the other types, allowing contracts with non-GP organisations (such as private companies or third sector providers) to provide primary care services. APMS contracts can also be used to commission other types of primary care service, beyond that of 'core' general practice. For example, a social enterprise could be contracted to provide primary health care to people who are homeless or asylum seekers.
AQP	Any Qualified Provider	Any qualified provider (AQP) is a type of NHS contract, which allows non-NHS as well as NHS organisations to provide NHS services. The AQP programme aims to give patients more choice about where they receive selected health services.

Acronyms

ASD	Autism Spectrum Disorder	A condition related to brain development that impacts how a person perceives and socialises with others, causing problems in social interaction and communication. The disorder also includes limited and repetitive patterns of behaviour.
AVS	Acute Visiting Service	A highly skilled and dedicated team of Advanced Nurse Practitioners (ANP's) and Emergency Care Practitioners (ECP's) provide acute visits to patients in their own homes or care. The service is for patients who need to be seen in their own home/care home. When patients contact their GP requesting a same day home visit for an acute need, the GP's can choose to refer on to the acute home visiting service. The aim of the service is to reduce inappropriate hospital admissions and enable patients to be cared for at home when it is clinically safe to do so. The service supports GPs to manage urgent care needs and enables them to focus on other priorities in Primary Care.
BADGER	Birmingham and District General Emergency Rooms	https://www.cqc.org.uk/provider/1-199800003
BAF	Board Assurance Framework	This brings together in one place all of the relevant information on the risks to the board's strategic objectives. It is an essential tool for boards, but like all tools it needs to be used with skill and diligence.
BAU	Business as Usual	The normal execution of standard functional operations within an organisation, forms a possible contrast to projects or programmes which might introduce change.
BAME	Black, Asian and Minority Ethnic Minority	NHS England ask that the BAME is no longer used, instead Ethnic Minorities
BCF	Better Care Fund	Formerly known as the Integration Transformation Fund, this is 'a single pooled budget for health and social care services to work more closely together in local areas, based on a plan agreed between the NHS and local authorities'. The BCF can be used to meet adult social care needs, reduce pressures on the NHS including by supporting discharge from hospital and support local social care provider markets.
BCHFT	Birmingham Children's Hospital NHS Foundation Trust	https://bwc.nhs.uk

BNP	Brain Natriuretic Peptide	levels increase markedly in left ventricular dysfunction and the level in heart failure correlates with symptom severity. BNP can therefore be an important clinical marker for the diagnosis of heart failure in patients with unexplained dyspnoea.
BOTOX	Botulinum Toxin Type A	The cosmetic form of botulinum toxin, sometimes referred to as "Botox" by patients, is a popular injectable that temporarily reduces or eliminates facial fine lines and wrinkles.
BPAS	British Pregnancy Advisory Service	The leading provider of abortion services in the UK with over 40 abortion clinics and sexual health centres in England, Wales and Scotland.
BPPC	Better Payment Practice Code	The aim to pay all valid invoices by the due date or within 30 days of receipt of a valid invoice, whichever is later. The target is to pay 95% of invoices, in terms of value and volume.
BSOL	Birmingham & Solihull	
C&E	Communications & Engagement	
CAG	Commissioning Advisory Group	CAG is not a decision-making body, rather it makes formal recommendations to NHS England about the commissioning of services in those circumstances where there could be a substantial change in service provision.
CAMHS	Children and Adolescent Mental Health Service	CAMHS is the name for the NHS services that assess and treat young people with emotional, behavioural or mental health difficulties.
CAS	Clinical Assessment Service	A clinical assessment service is an intermediate service that allows for a greater level of clinical expertise in assessing a patient than would normally be expected of a referring clinician (such as a GP).
CB	Commissioning Board	The Commissioning Board is a new independent body with executive powers and exceptional responsibilities, assessing matters in relation to clinical commissioning groups.
CBSA	Commissioning Business Support Agency	Provide both strategic advice and operational support, to ensure the robustness of commissioning and clinical activities.
CC	Cannock Chase	
CCG	Clinical Commissioning Group	Established by the Health and Social Care Act 2012, CCGs are responsible for commissioning the majority of NHS services for patients within their local area. They are membership bodies, made up of GP practices, and their governing bodies include GPs, other health professionals and patient representatives.
CCU	Civil Contingencies Unit	The Civil Contingencies Unit is a small team of specialist planners based in Stafford that ensures preparations are in

		place to support the people of Staffordshire and Stoke-on-Trent in an emergency or major incident such as a flood.
CCU	Critical Care Unit	Specialist hospital wards that treat patients who are seriously ill and need constant monitoring. These units are staffed by specially trained health care professionals who deliver intensive levels of care and treatment.
CD	Clinical Director	
<i>Cdiff</i>	Clostridium Difficile Infection	Clostridium difficile is a type of bacteria that can cause diarrhoea. It often affects people who have been taking antibiotics.
CEO	Chief Executive Officer	
CFO	Chief Finance Officer	
CGA	Comprehensive Geriatric Assessment	This is defined as a multi-dimensional interdisciplinary diagnostic process focused on determining a frail older person's medical, psychological and functional capability in order to develop a coordinated and integrated plan for treatment and long-term follow-up.
CHC	Continuing Health Care	This refers to a package of health and social care provided outside hospital, often at home or in a care home, that is arranged and funded solely by the NHS, rather than by local authorities or individuals. People who are eligible for CHC are usually individuals with long-term complex health and care needs. To qualify, their needs must primarily be for health care rather than social care.
CHKS	CHKS - part of Capita Healthcare Decisions.	Leading provider of healthcare intelligence and quality improvement services.
CHPP	Children's Health Promotion Programme	The programme aims to enable each child to attain their highest possible standard of health by delivering universal health promotion services and detecting medical or social risks or problems at an early stage and facilitating effective intervention.
CHRT	Crisis Home Resolution Team	Crisis teams support with mental health crisis outside hospital.
CIG	Clinical Informatics Group	The capture, communication and use data and clinical knowledge to support health professionals.
CIP	Cost Improvement Programme	NHS organisations' efficiency targets, which are reported to NHSEI and aggregated up to give a national figure. The efficiency targets are set at the beginning of the financial year based on the projected income for each organisation, set against expected costs.
CL	Clinical Lead	Coordinate and oversee activities of the clinic and clinical team members to ensure compassionate, effective and efficient delivery of high quality clinical care for patients.

CMHT	Community mental health teams	These teams provide support to people with mental illness who are living in the community. They are made up of a range of professionals including psychiatrists, community psychiatric nurses, occupational therapists and support workers.
CMT	Contract Management Team	The contract management team is supported by business intelligence, quality and performance and finance teams to ensure an integrated approach to contract management, including activity and financial analysis, quality and performance management.
CNST	Clinical Negligence Scheme for Trusts	The Clinical Negligence Scheme for Trusts (CNST) handles all clinical negligence claims against member NHS bodies where the incident in question took place on or after 1 April 1995 (or when the body joined the scheme, if that is later). Although membership of the scheme is voluntary, all NHS Trusts (including Foundation Trusts) in England currently belong to the scheme.
CoE	Care of the Elderly	
COG	Clinical Oversight Group	It has a range of responsibilities which include receiving, scrutinising and advising workstreams on the traffic light status of new drugs or existing medications.
COPD	Chronic Obstructive Pulmonary Disease	A chronic inflammatory lung disease that causes obstructed airflow from the lungs. Symptoms include breathing difficulty, cough, mucus (sputum) production and wheezing. It's typically caused by long-term exposure to irritating gases or particulate matter, most often from cigarette smoke. People with COPD are at increased risk of developing heart disease, lung cancer and a variety of other conditions.
CPAG	Clinical Policies Advisory Group	Makes recommendations on NHS England's approach to commissioning services, treatments and technologies, and considers which of these should be prioritised for investment. Its scope includes all specialised services of NHS England.
CPN	Community Psychiatric Nurse	CPNs work outside hospitals and visit clients in their own homes, out-patient departments or GP surgeries.
CQC	Care Quality Commission	The role of the CQC is to register care providers and monitor, inspect and rate their services in order to protect users. CQC publishes independent views on major quality issues in health and social care.
CQI	Continuous Quality Improvement	Continuous Quality Improvement group which is a subgroup of the System Quality and Safety Committee.

CQRM	Clinical Quality Review Meetings	The CQRM provides commissioners with assurance by reviewing a range of evidence, provided by the Trust, to ensure they are providing services in line with the requirements stipulated within the contract held between the CCG and the Trust, the NHS Constitution, and Fundamental Standards of Care regulations.
CQUIN	Commissioning for Quality and Innovation	A framework which supports improvements in the quality of services and the creation of new, improved patterns of care.
CRL	Capital Resource Limit	The mandate sets out an NHS organisation's total revenue resource limit and total capital resource limit for the financial year
CRT	Crisis Response Team	Provide urgent care to people in their homes which helps to avoid hospital admissions and enable people to live independently
CSUs	Commissioning Support Units	Provide Clinical Commissioning Groups with external support, specialist skills and knowledge to support them in their role as commissioners, for example by providing: Business intelligence services. Clinical procurement services.
CSW	Clinical Support Worker	Clinical support staff work with nurses, midwives, doctors and allied health professionals to deliver high-quality care. Many clinical support staff are involved in looking after the general well-being and comfort of patients.
CWG	Clinical Working Group	Examine issues that have arisen in the commissioning of, and access to, a clinical service.
D&V	Diarrhoea & Vomiting	
DC	Day Care	
DCC	Direct Clinical Care	Direct clinical care work is any work that involves the delivery of clinical services and administration directly related to them.
DEL	Departmental expenditure limit	This refers to central governmental departmental spending that is subject to annual budgetary limits.
DES	Direct Enhanced Service	The network contract Direct Enhanced Service (DES) underpins the role of primary care networks in empowering general practice within the wider NHS and improving the range and effectiveness of primary care services.
DHSC	Department of Health and Social Care	Support ministers in leading the nation's health and social care to help people live more independent, healthier lives for longer.
DIPC	Director of Infection Prevention & Control	

DMBC	Decision Making Business Case	Is based on the evidence set out in the Pre-Consultation Business Case (PCBC), feedback from consultation and further evidence compiled post-consultation.
DN	District Nurse	District nurses make a difference everyday to the lives of the people they visit at home and in residential care homes. They provide increasingly complex care for patients and support for family members.
DOAC	Direct Oral Anti-Coagulant	Used for the prevention of thrombosis in several cardiovascular contexts.
DOF	Director of Finance	
DOLS	Deprivation of Liberty Standards	An amendment to the Mental Capacity Act 2005 that is only applicable in England and Wales introduced these safeguards. They ensure that people who can't consent to their own care arrangements in a care home or hospital are protected if those arrangements deprive them of their liberty. Authorisation is given by a local authority and is subject to an independent assessment that the arrangements are necessary and in the person's best interests.
DPIA	Data Privacy Impact Assessment	A process designed to help you systematically analyse, identify and minimise the data protection risks of a project or plan.
DPO	Data Protection Officer	Ensure that their organisation processes the personal data of its staff, customers, providers or any other individuals (also referred to as data subjects) in compliance with the applicable data protection rules.
DPP	Developing Patient Partnerships	Since its inception, NHS England has been committed to the principle of co-designing national health strategies with voluntary sector and patient groups, citizens and community partners.
DQF	Data Quality Facilitator	Are heavily involved in work relating to the quality of data capture within the organisation and are involved with data inputting, validation and audits.
DRS	Dental Reference Service	A part of the National Health Service which employs a team of experienced and calibrated dentists (dental reference officers) to monitor and advise on quality within the General and Personal Dental Services.
DTOC	Delayed Transfer of Care	A DTOC (or delayed discharge) occurs when a patient is ready to leave a hospital (or similar care provider) or step down to a less intensive level of care but cannot be discharged and is still occupying a bed. DTOCs commonly occur between health and social care services but also between NHS services, for example between mental health services and community inpatient services. Common reasons for delayed transfers include awaiting care packages, appropriate accommodation or waits for assessment.
EAU	Emergency Admissions Unit	The first point of entry for patients referred to hospital as an acute medical emergency by their GP and those requiring admission from the Emergency Department.
ECIST	Emergency Care Intensive Support Team	A clinically led national NHS team that has been designed by clinicians to help health and care systems deliver high quality emergency care.

ED	Emergency Department	These services provide medical services for individuals who require urgent attention for illness or injury. Urgent care services treat accidents and illnesses that require urgent attention but are not life threatening. In the NHS, urgent and emergency care includes services such as accident and emergency departments, ambulance services, urgent treatment centres and NHS 111.
EDC	Equality and Diversity Council	The Equality and Diversity Council works to bring people and organisations together to realise a vision for a personal, fair and diverse health and care system, where everyone counts and the values of the NHS Constitution are brought to life.
EDD	Expected Discharge Date	This process streamlines the transfer of care from the beginning of the inpatient journey, taking social care requirements and the risk of overprescribing community care into consideration. If necessary, the EDD can be adjusted.
EDS	Equality Delivery System	It is a system that helps NHS organisations improve the services they provide for their local communities and provide better working environments, free of discrimination, for those who work in the NHS, while meeting the requirements of the Equality Act 2010.
EHCH	Enhancing Health in Care Homes	Moving away from traditional reactive models of care delivery towards proactive care that is centred on the needs of individual residents, their families and care home staff. Such care can only be achieved through a whole-system, collaborative approach.
EHIA	Equality and Health Impact Assessment	Equality impact assessments ensure that our policies, services and legislation do not discriminate against anyone and that, where possible, we promote equality of opportunity. ... Completion of equality impact assessments is a legal requirement under race, disability and gender equality legislation.
EL	Elective	Care that is planned in advance. It involves specialist clinical care or surgery, generally following a referral from a GP or community health professional.
EMS	Escalation Management System	Tracks the status of health and social care organisations across the region, making it easier for ambulance crews, emergency departments, urgent care centres and other provider settings to support each other through busy periods.
EMSA	Eliminating Mixed Sex Accommodation	Providers of NHS-funded care are expected to have a zero-tolerance approach to mixed-sex accommodation, except where it is in the overall best interest of all patients affected.
EMT	Executive Management Team	Is a group of our most senior staff, who take responsibility for specific areas of our work.
ENT	Ear Nose Throat	

EOL	End of Life	
EPO	Emergency Planning Officers	Provide advice, co-ordination, guidance, information, training and support to the organisation, in the development and implementation of health Emergency Preparedness, Resilience & Response (EPRR) planning.
EPR	Electronic Patient Record	A series of software applications which bring together key clinical and administrative data in one place.
ESR	Electronic Staff Record	The Electronic Staff Record is a payroll database system commissioned by the Department of Health and Social Care that NHS organisations are entitled to use free of charge.
EWTD	European Working Time Directive	Is an EU initiative to prevent employers from requiring their workforce to work excessively long hours, with implications for health and safety.
F&P	Finance and Performance	
FE	Frail Elderly	
FET	Funding Exceptional Treatment	Because your clinical circumstances are exceptional, you may receive benefit from a treatment or service that isn't routinely offered by the NHS.
FFT	Friends and Family Test	Created to help service providers and commissioners understand whether patients are happy with the service provided, or where improvements are needed.
FIG	Financial Improvement Group	Support the delivery of a comprehensive programme of schemes which identify efficiencies that have a financial benefit, enabling the Board to achieve and maintain financial balance through effective management, control, innovation, quality and best practice.
FIMS	Financial Information Management System	Supports the automation and integration of public financial management processes including budget formulation, accounting, and reporting.
FIT	Financial Improvement Team	
FNOF	Fractured Neck of Femur	A fractured neck of femur (broken hip) is a serious injury, especially in older people.
FOI	Freedom of Information	The Freedom of Information Act 2000 provides a right of access to a wide range of information held by public authorities, including the NHS. The purpose is to promote greater openness and accountability.
FPC	Finance Performance & Contract Committee	The Committee is a non-Executive committee and has no executive powers, other than those specifically delegated in their Terms of Reference.
FRP	Financial Recovery Plan	The FRP sets out a challenging transformational change programme that focuses on improving quality and outcomes for the patients we serve whilst concurrently returning the system to financial balance, allowing the NHS Partners within the system to continue to meet the current and future needs of our population.

GAAP	Generally Accepted Accounting Principles	Are standards that encompass the details, complexities, and legalities of business and corporate accounting.
GB	Governing Body	Responsible for making the final decisions within the CCG and is accountable to NHS England and to our member practices, as well as to the public. Every GP practice has a vote to elect its representatives on to the governing body.
GDC	General Dental Council	An independent organisation which regulates dentists and dental care professionals in the UK.
GDE	Global Digital Exemplars	a group of NHS providers who have been given central support and funding in exchange for making progress, capturing lessons and supporting others in the system on making best use of digital technology.
GDS	General Dental Services	Is usually the first point of contact for NHS dental treatment.
GMS	General Medical Services (Practice)	One of three different types of GP contracts, the GMS contract is the national standard GP contract and currently the majority of GP practices use this type of contract. This contract is negotiated nationally every year between NHS England and the General Practice Committee of the British Medical Association (BMA), the trade union representative of GPs in England. It is then used by either NHS England and/or CCGs (depending on delegated powers) to contract local general practices in an area.
GOC	Gold On-Call	Has overall command of the resources of their own organisation, but delegate's tactical decisions to their respective tactical commanders. Strategic command has a key role in strategic monitoring of the response to an incident.
GP	General Practitioner	Treat all common medical conditions and refer patients to hospitals and other medical services for urgent and specialist treatment.
GPFV	General Practice Forward View	Was published in April 2016. It committed to an extra £2.4 billion a year to support general practice services by 2020/21, and aimed to improve patient care and access, and invest in new ways of providing primary care.
GPWSI	GP with special interest	Is a GP who undertakes, in addition to their core general practice, a role that is beyond the scope of GP training.
GSF	Gold Standard Framework	Is the UK's leading training provider for generalist frontline staff in caring for people in the last years of life.
HALO	Hospital Ambulance Liaison Officer	Work in partnership with the hospitals to develop and improve processes with the aim of streamlining patient flow which in turn will improve both ambulance performance and hospital turnaround times for A&E departments.

HCAI	Healthcare Associated Infections	Infections can be associated with the devices used in medical procedures, such as catheters or ventilators.
HEE	Health Education England	Its function is to provide national leadership and coordination for the education and training within the health and public health workforce within England.
HEFCE	Higher Education Funding Council for England	Distributes public money for teaching and research to universities and colleges.
HEFT	Heart of England Foundation NHS Trust	Was one of the largest organisations running NHS hospitals in England until it was disbanded in 2018.
HFMA	Healthcare Financial Management Association	Is the professional body for finance staff in healthcare.
HIS	Health Informatics Service	The Health Informatics Service is an innovative, collaborative NHS organisation providing digital and IT services to health and care providers.
HOT	Heads of Terms	
HPS	Health promoting Schools	An EIS response for teachers in schools on healthy eating, physical activity and emotional well-being for teachers and pupils.
HR	Human Resources	Ensures that your business is compliant with all the legislation and guidance that surrounds employing people, including contracts, health and safety, payroll, and recruitment.
HRG4	Healthcare Resource Group 4	A grouping consisting of patient events that have been judged to consume a similar level of resource.
HROD	Human Resources Organisational Development	
HSJ	Health Service Journal	Leading health industry trade magazine.
HWB	Health and Wellbeing Boards	HWBs were established under the Health and Social Care Act 2012 as a partnership forum in which key leaders from the local health and care system come together to improve the health and wellbeing of their local population. They exist in all 152 local authorities with adult social care and public health responsibilities. They have a statutory duty, with clinical commissioning groups (CCGs), to produce a joint strategic needs assessment and a joint health and wellbeing strategy for their local population.
IAPT	Improving Access to Psychological Therapies	Designed to support the NHS in delivering evidence-based talking therapies for people with common mental health problems, such as depression and anxiety disorders, in England.

ICB	Integrated Care Board	An organisation with responsibility for NHS functions and budgets, and an Integrated Care Partnership (ICP), a statutory committee bringing together all system partners to produce a health and care strategy. When ICBs are legally established, clinical commissioning groups (CCGs) will be abolished.
ICG	Infection Control Group	
ICP	Integrated Care Partnerships	Will drive the direction and policies of the integrated care system by being rooted in the needs of people, communities, and places to create a space to develop and oversee population health strategies to improve health outcomes and experiences. ICPs should take an open and inclusive approach to strategy development and leadership, involving communities and partners, and utilise local data and insights.
ICR	Integrated Care Record	refer to datasets and sharing approaches built so that a range of information from records from across health and social care can be linked together. This information is made available to support direct care in different settings and for secondary uses like planning and research too.
ICS	Integrated Care System	ICSs are evolving from sustainability and transformation partnerships (STPs) and take the lead in planning and commissioning care for their populations and providing system leadership. They bring together NHS providers and commissioners and local authorities to work in partnership in improving health and care in their area. Compared to STPs, ICSs require a closer form of collaboration as they take on greater responsibility for collectively managing resources and performance, and for transforming the way care is delivered. The NHS long-term plan set an ambition for all areas of England to be covered by an ICS by April 2021.
ICSI	Intracytoplasmic Sperm Injection	A tiny needle, called a micropipette, is used to inject a single sperm into the centre of the egg.
IFPS	Intelligent Fixed Payment System	Is a contracting approach between the Staffordshire and Stoke-on-Trent CCGs and the local providers.
IFR	Independent Funding Request	An individual funding request can be made by the clinician treating you if they believe that because your clinical circumstances are exceptional, you may receive benefit from a treatment or service that isn't routinely offered by the NHS.
IFRS	International Financial Reporting Standards	Are accounting standards issued by the IFRS Foundation and the International Accounting Standards Board.
IG	Information Governance	Is about how to manage and share information or data appropriately.
IM&T	Information Management and Technology	Refers to the processes, systems, hardware, and software a company uses to conduct its day-to-day operations.

INR	International Normalised Ratio	Is a method of measuring how fast the blood clots.
IP	Inpatients	A patient who lives in hospital while under treatment.
IPC	Infection Prevention & Control	Is a practical, evidence-based approach which prevents patients and health workers from being harmed by avoidable infection and as a result of antimicrobial resistance.
IPR	Individual Performance Review	Is a formal assessment in which a manager evaluates an employee's work performance, identifies strengths and weaknesses, offers feedback, and sets goals for future performance.
IQT	Improving Quality Team	
ISA	Intermediate Support Assistant	Band 4 care assistant.
ISFE	Integrated Single Financial Environment	The financial platform that enables the NHSE Group to run its core financial processes
ITT	Invite to Tender	Is a formal, structured procedure for generating competing offers from different potential suppliers or contractors looking to obtain an award of business activity in works, supply, or service contracts.
IV	Intravenous Therapy	Is a medical technique that delivers fluids, medications and nutrients directly into a person's vein.
IVF	Intravenous Fertilisation	(IVF) is one of several techniques available to help people with fertility problems have a baby.
JCI	Joint Clinical Investigation	A contractual mechanism set out under the NHS Standard Contract.
JHWS	Joint Health & Well-Being Strategy	Outlines the commitment to improving the health and wellbeing of all who live, work and study in Staffordshire and Stoke-on-Trent.
JSNA	Joint Strategic Needs Assessment	This is a process by which local authorities and partner organisations assess the current and future health, care and wellbeing needs of the local community to inform local decision-making. JSNAs usually contain information about the health and wellbeing status of the local population, identify inequalities and illustrate trends. They may also outline local community views and highlight suggested areas for focus for collective action to improve the lives of people locally. Health and Wellbeing Boards and clinical commissioning groups are under a statutory duty to produce a JSNA.
JSP	Joint Staff Partnership	Undertaken on behalf of the organisation with Trade Unions providing a forum to enable effective joint discussions between employer and employee representatives, on employment issues, relating to the effective implementation of Health and Social Care Integration.
KPI(s)	Key Performance Indicator(s)	Evaluate the success of an organization or of a particular activity in which it engages.
KPMG		Is a global network of professional firms providing Audit, Tax and Advisory services.
LAA	Local Area Agreement	An agreement that sets out the priorities for a local area agreed between central government and a local area and other key partners at the local level.

LD	Learning Disability	Is defined by the Department of Health as a “significant reduced ability to understand new or complex information, to learn new skills (impaired intelligence), with a reduced ability to cope independently (impaired social functioning), which started before adulthood”.
LDP	Local Delivery Plan	
LES	Local Enhanced Service	Locally developed services designed to meet local health needs
LETB	Local Education and Training Board	Are the thirteen regional structures in the health education and training system of the NHS in England, established as part of the NHS reforms of April 2013.
LH	Local Hospital	
LHE	Local Health Economy	The NHS organisations including GP practices, and voluntary and independent sector bodies involved in the commissioning, development and provision of health services for particular population groups.
LIN	Local Intelligence Network	Share information and intelligence about the misuse and safe use of controlled drugs.
LMC	Local Medical Council	The professional organisation representing individual GPs and GP practices
LMS	Local Medical Services	
LOC	Local Ophthalmic Committee	Are statutory bodies established within the British National Health Service to represent the interests of community optometrists and opticians.
LQR	Local Quality Indicator	Help you improve the quality of care you provide or commission.
LSP	Local Strategic Partnership	Bring together representatives from the local statutory, voluntary, community and private sectors to address local problems, allocate funding, and discuss strategies and initiatives.
LTB	Local Transition Board	
LTC	Long Term Conditions	A human health condition or disease that is persistent or otherwise long-lasting in its effects or a disease that comes with time.
LTFM	Long Term Financial Model	The forecast is typically based on the company’s historical performance, assumptions about the future, and requires preparing an income statement, balance sheet, cash flow statement, and supporting schedules.
MAT	Maternity	
MAU	Medical Assessment Unit	Assess whether patients need to be admitted into hospital or can be treated as an outpatient.
MB	Membership Board	

MCA	Mental Capacity Act	This law applies to everyone involved in the care, treatment and support of people aged 16 and over living in England and Wales who are unable to make some or any decisions for themselves. The primary purpose of the MCA is to promote and safeguard decision-making within a legal framework. It does this by empowering people to make decisions by themselves and protecting those who lack capacity by ensuring decisions are guided by a set of principles, such as ensuring all decisions are in the best interests of the person. It also allows for people to plan for their future when they might lack capacity.
MCD	Maximum Cash Drawdown	Is an indicator of downside risk over a specified time period.
MCPs	Multispecialty community providers	GPs practices come together in networks or federations and collaborate with other health and social care professionals to provide more integrated services outside of hospitals.
MDT	Multidisciplinary Team	Health and care professionals work together to support people with complex care needs that have been identified through risk stratification and case finding.
MFCA	Multi Factorial Comprehensive Assessment	An assessment with multiple components that aims to identify a person's risk factors.
MH	Mental Health	Mental health includes our emotional, psychological, and social well-being. It affects how we think, feel, and act. It also helps determine how we handle stress, relate to others, and make choices.
MHIS	Mental Health Investment Standard	Set by NHS England, requires all CCGs in England to increase their planned spending on Mental Health services by a greater proportion than their overall increase in budget allocation each year.
MHRA	Medicines & Healthcare products Regulatory Agency	Is an executive agency of the Department of Health and Social Care in the United Kingdom which is responsible for ensuring that medicines and medical devices work and are acceptably safe.
MICATS	Musculoskeletal Integrated Clinical Assessment & Treatment Service	Is an integrated service consisting of a team of specialists including a Consultant, experienced Physiotherapists and Podiatrists, Occupational Therapists, Psychologist and Pharmacist who will assess you and identify the most appropriate course of management for your condition.
MICOT	Minor Injuries Community Outreach Team	
MIU	Minor Injuries Unit	Offer advice and treatment for a variety of injuries including; cuts, grazes, wounds, sprains, minor eye injuries, strains and minor burns.
MLCSU	Midlands & Lancashire Commissioning Support Unit	See CSU
MLU	Midwife-led Unit	Is a short stay birthing centre which is a relaxed environment close to the hospital with midwives and clinical support workers always on shift.

MOI	Memorandum of Information	Is a document produced prior to selling your business, and essentially functions as your opening pitch to any prospective buyers.
MOU	Memorandum of Understanding	Sets out the nature of the partnership between NHS England, ABPI and BGMA through the PISP, and provides a framework within which all parties can address strategic issues of mutual interest.
MPIG	Medical Practice Income Guarantee	
MRSA	Methicillin-resistant Staphylococcus aureus	Is a type of bacteria that can cause serious infections because it's resistant to several antibiotics.
MSK	Musculoskeletal	Includes bones, muscles, tendons, ligaments and soft tissues.
MUR	Medicine Use Review	Are a part of the Advanced Services of the community pharmacy contract.
NCAS	National Clinical Assessment Service	Provide impartial advice to healthcare organisations to effectively manage and resolve concerns raised about the practice of individual doctors, dentists and pharmacists.
NCB	National Commissioning Board	Now known as NHS England.
NCT	National Childbirth Trust	Are the UK's leading charity for parents, for your First 1000 Days - right through your pregnancy, birth and beyond.
NEDs	Non-Executive Directors	Is a member of the board of directors of a company or organisation, but not a member of the executive management team.
NEL	Non-Elective	Relating to, being, or involving an urgent medical procedure and especially surgery that is essential to the survival of the patient a nonelective appendectomy acute nonelective surgery.
NES	National Enhanced Service	Services to meet local needs, commissioned to national specifications and benchmark pricing.
NHQAIG	Nursing Home Quality Assurance and Improvement Group	A CCG chaired group where partners are invited to discuss Care homes.
NHS	National Health Service	The publicly funded healthcare system in England
NHS LTP	NHS Long Term Plan	This ten-year plan, published in January 2019, sets out the NHS's priorities for health care as well as setting out how a £20.5 billion budget settlement for the NHS will be spent. The plan built on the vision set out in the NHS five year forward view. It outlines a range of priorities including improving out-of-hospital care, investment in primary and community care, improving outcomes for a range of conditions and establishing integrated care systems in all parts of the country.
NHSE	NHS England	The bodies responsible for providing national direction on service improvement and transformation, governance and accountability, standards of best practice, and quality of data and information.

NICE	National Institute for Clinical Excellence	An agency of the National Health Service charged with promoting clinical excellence in NHS service providers in England and Wales, by developing guidance and recommendations on the effectiveness of treatments and medical procedures.
NICU	Neonatal Intensive Care Unit	Newborn babies who need intensive medical care are often put in a special area of the hospital called the neonatal intensive care unit.
NMC	Nursing and Midwifery Council	The independent regulator for nurses, midwives and nursing associates.
NRPSI	National Register of Public Service Interpreters	The UK's independent voluntary regulator of professional interpreters specialising in public service.
NSCHT	North Staffordshire Combined Healthcare NHS Trust	https://www.combined.nhs.uk/
NSL	Non-Urgent Patient Transport Provider	Provide funded transport where a medical condition means that a patient would struggle to safely attend their treatment independently.
NTDA	NHS Trust Development Authority	Responsible for overseeing the performance management and governance of NHS Trusts, including clinical quality, and managing their progress towards foundation trust status.
OAP	Out of Area Placement	An OAP occurs when a person is assessed as requiring inpatient care or treatment and is admitted to a unit that is not part of the usual local network of services. Out-of-area placements are a particular issue in the care of people with acute mental health problems, learning disability and autism. OAPs can harm patients and set back recovery, and the government has set a target to eliminate inappropriate use of OAPs by 2020/21.
OBD	Occupied Bed Days	Sum of the number of occupied beds for each day of the period.
OD	Organisational Development	Is about leading change, service improvement initiatives, engaging and motivating staff, developing their talents and improving potential of staff.
OFSTED	Office for Standards in Education, Children's Services and Skills	Is responsible for inspecting a range of educational institutions, including state schools and some independent schools, in England.
OOH	Out of Hours	General practice services that are provided outside core working hours. A practice is assumed to provide these by default but can opt out. Where a practice opts out, as most practices do, commissioners have the responsibility for contracting a replacement service to cover the general practice area population.
OOH	Out of Hospital	

OP (D)	Outpatients (Department)	If you have an appointment in a hospital or clinic but do not need to stay overnight, it means you're being treated as an outpatient or a day patient.
OT	Occupational Therapist	Aims to improve your ability to do everyday tasks if you're having difficulties.
PA	Programmed Activities	Are blocks of time, usually equivalent to four hours, in which contractual duties are performed.
PACS	Primary and Acute Care Systems	A single entity or group of providers take responsibility for delivering the range of primary, community, mental health and hospital services for their local population, to improve co-ordination of services and move care out of hospital where appropriate.
PAED	Paediatrics	Is the branch of medicine that involves the medical care of infants, children, and adolescents.
PALS	Patient Advice and Liaison Service	Offers confidential advice, support and information on health-related matters. They provide a point of contact for patients, their families and their carers.
PASS	Professional Advice and Support Service	Exists for all CSP members and offers bespoke advice on professional issues such as scope, record keeping, consent, medicines and prescribing and general PLI guidance.
PAU	Paediatric Assessment Unit	An emergency assessment unit for children and young people where they can be referred by their GP, Midwife, Health Visitor, Urgent Care Centre (UCC) and/or the Paediatric Emergency Department (PED).
PBC	Practice Based Commissioning	Was a government policy, introduced in 2005, designed to give general practitioners, nurses and other primary care professionals the power to decide how NHS money is spent in their local area.
PBP	Place Based Partnership	Will play a key role in driving forward change within the integrated care system by involving a wide range of partners to act on the full range of factors that influence health and wellbeing.
PBR	Payment By Results	Is a type of public policy instrument whereby payments are contingent on the independent verification of results.
PC	Planned Care	The name the NHS gives to health services and treatments that are required following a referral from your GP or another community health professional.
PCBC	Post Consultation Business Case	Is based on the evidence set out in the Pre-Consultation Business Case (PCBC), feedback from consultation and further evidence compiled post-consultation.
PCCC	Primary Care Commissioning Committee	The Committee is able to make decisions and will provide assurance to the Governing Bodies of both CCGs to make sure that matters relating to Primary Care are well governed and well managed.
PCN	Primary Care Network	PCNs form a key building block of the NHS long-term plan. They bring general practices together in geographical networks to work at scale and typically cover populations of approximately 30,000 to 50,000 people. PCNs are linked to a new GP contract which makes new funding available for practices in exchange for delivering a wide range of services.

PCR	Patient Charge Revenue	
PHB	Personal Health Budget	A personal health budget is an amount of money to support an individual's health and wellbeing needs, which is planned and agreed between them (or someone who represents them), and their local NHS team...allows you to manage your healthcare and support such as treatments, equipment and personal care, in a way that suits you. It works in a similar way to personal budgets, which allow people to manage and pay for their social care needs.
PHM	Population Health Management	Population health management refers to the ways of bringing together health-related data to identify groups of patients or specific population groups at risk of ill health that health services may then prioritise. For example, data may be used to identify groups of people who are frequent users of accident and emergency departments. This way of using data is also sometimes called population segmentation.
PID	Project Initiation Document	The PID gathers information needed for the project board to make a decision on whether to go ahead with the project or not.
PII	Period of Increased Incidence	Two or more new cases (occurring >48 hours post admission, not relapses) in a 28-day period on a ward.
PIP	Partners in Paediatrics	
PIRT	Provider Improvement & Response Team	The teams will give those who need it fast access to a range of qualified professionals who can address both their health and social care needs.
PIS	Prescribing Incentive Scheme	Is designed to increase value for money by improving the quality and cost effectiveness of primary care prescribing.
PLCV	Procedures of Limited Clinical Value	Is a term NHS managers have applied to a range of elective surgical procedures that they no longer wish to fund
PLT	Protected Learning Time	Is an opportunity for practice staff to address their own learning and professional development needs.
PM	Practice Manager	Oversee and develop the work of a GP surgery, or a group of surgeries.
PMO	Programme Management Office	Is designed to support staff in their role as Project Managers and enhance their ability to deliver change.
PMS	Personal Medical Services	One of three different types of GP contracts, the PMS contract is a type of core GP contract that is negotiated and agreed locally by clinical commissioning groups or NHS England with general practices. This contract offers commissioners an alternative route with more flexibility to tailor requirements to local need while also keeping within national guidelines and legislation. This contract is currently being phased out, but in 2018/19, 26 per cent of practices held a PMS contract.

POPP	Partnerships for Older People Projects	
PPG	Patient Participation Group	Is a group of patients, carers and GP practice staff who meet to discuss practice issues and patient experience to help improve the service.
PPI	Patient and Public Involvement	There are a lot of terms that are often used interchangeably to describe aspects of this area of work including involvement, participation and engagement. It is useful to differentiate between the involvement of individuals and the involvement of patients and the public more widely. Individual involvement refers to people being actively involved in decisions and having greater control over their own health and care, or the care of others if they are a carer. Patient and public involvement is often used to refer to activities that involve people at a collective level, such as in the design, planning and delivery of health and care services.
PPI (prescribing)	Proton Pump Inhibitors	Are a class of medications that cause a profound and prolonged reduction of stomach acid production.
PPV	Post Payment Verification	To provide assurance to Health Boards that the claims for payment made by primary care contractors are appropriate and that the delivery of the service is as defined by NHS service specification and relevant legislation.
PQQ	Pre Qualifying Questionnaire	Is used to ascertain the suitability of a contractor or supplier.
PRF	Patient Report Form	Provides a medical/ legal record of assessments, observations, treatment and actions undertaken by clinicians.
PRISM	Personnel Resource Information System for Management	
PROMs	Patient Related Outcome Measures	Assess the quality of care delivered to NHS patients from the patient perspective.
PT	Physical Therapist	
PTL	Patient Target List	A report used to ensure the maximum waiting times targets are achieved by identifying all patients who will breach the current wait times targets.
PU	Pressure Ulcer	Are injuries to the skin and underlying tissue, primarily caused by prolonged pressure on the skin.
PWSI	Pharmacist with Special Interest	Is a pharmacist who undertakes, in addition to their core duties, a role that is beyond the scope of GP training.
QIA	Quality Impact Assessment	Are required to be undertaken on new plans, programmes, projects and savings schemes.
QIF	Quality Improvement Framework	For quality improvement that guides a consistent approach to quality improvement in the locality, organisation, and service plans.
QIL	Quality Improvement Lead	
QIPP	Quality, innovation, productivity and prevention.	The way we are going to create cost-effective, high quality services.

QOF	Quality and Outcomes Framework	Disease prevalence and care quality achievement rates.
QSISM	Quality and Safeguarding Information Sharing Group	A group where partners meet to share information.
RAG	Red Amber Green	
RAP	Remedial Action Plan	Is a detailed summary of the environmental issues found on a property during a site characterization and outlines a plan of action that illustrates which remedies will be used to achieve clean up goals.
RCA	Root Cause Analysis	Is a methodology applied to support and add rigour to serious incident investigations by applying a systematic process whereby the factors that contributed to an incident are identified.
RDAG	Rare Diseases Advisory Group	The Rare Diseases Advisory Group makes recommendations to NHS England on developing and implementing the strategy for rare diseases and highly specialised services.
RDH	Royal Derby Hospital	https://www.uhdb.nhs.uk/about-royal-derby-hospital
RIA	Risk Impact Assessment	The process of assessing the probabilities and consequences of risk events if they are realised.
RRL	Revenue Resource Limit	The Mandate sets out NHS England's total revenue resource limit and total capital resource limit for the financial year.
RSUH	Royal Stoke University Hospital	https://www.uhnm.nhs.uk/
RTT	Referral to Treatment	https://www.england.nhs.uk/rtt/
RWT	Royal Wolverhampton Hospital Trust	https://www.royalwolverhampton.nhs.uk/about-us/
SALT	Speech & Language Therapist	
SARC	Sexual Assaults Referrals Centre	Offer medical, practical and emotional support to anyone who has been sexually assaulted or raped.
SAS	Stafford and Surrounds	
SCBU	Special Care Baby Unit	https://www.nhs.uk/pregnancy/labour-and-birth/after-the-birth/special-care-ill-or-premature-babies/
SCC	Staffordshire County Council	https://www.staffordshire.gov.uk/Homepage.aspx
SCIO	Staffordshire Consortium of Infrastructure Organisations	
SCR	Strategic Change Reserve	The reserve of a commodity or items that is held back from normal use by governments, organisations, or businesses in pursuance of a particular strategy or to cope with unexpected events.

SCR	Summary Care Record	Summary Care Records are an electronic record of a subset of important information taken from patients' GP medical records. NHS Digital run a national information service making these available to authorised staff involved in a patient's direct care. A patient's SCR includes details about their medication and allergies, as well as key personal information. Patients with their GPs can add information, such as frailty, to the SCR.
SCWP	Social Care Workforce Planning	Exploring key drivers of workforce supply and demand over a set period of time.
SDB	Service Delivery Board	To support the achievement of the organisations' vision through the development, monitoring and overview of key strategies, policies and plans relating to service delivery.
SDIP	Service Delivery Improvement Plan	Is a strategic plan that helps leaders and members of the community identify problems in a municipal department.
SDP	System Development Plan	Supporting the development of integrated care systems to deliver improved outcomes.
SI	Serious Incident	
SIB	Service Improvement Board	Have reserved key decisions and matters for their own decision, including strategic direction, overseeing delivery of the agreed strategy, the approach to risk, and establishing the culture and values of the organisations.
SIC	Statement of Internal Control	Is a public accountability document that describes the effectiveness of internal controls in an organisation and is personally signed by the Accounting Officer.
SIRO	Senior Information Risk Officer	Is a professional who has responsibility for implementing and managing information risks within the organisation.
SLAM	Service Level Agreement Model	Is a documented agreement between a service provider and a customer that identifies both the services required and the expected level of service.
SOC	Silver On-Call	Refers to those who will be at or near the scene, providing overall management of the response to an emergency. Tactical managers determine, with others, priorities in allocating resources, obtaining further resources as required, planning, and co-ordinating tasks.
SOP	Standard Operating Procedure	Is part of the risk assessment exercise itself and provides a written means to instruct employees on how a particular procedure should be carried out and lays out boundaries of responsibility. It can be used to satisfy legal compliance requirements too.
SPA	Single Point of Access	Is a team of clinicians who review your emotional and mental health concerns and help establish the best way to support you.
SPF	Social Partnership Forum	Brings together NHS Employers, NHS trade unions, Health Education England, NHS England and NHS Improvement, and the Department of Health and Social Care to contribute to the development and implementation of policy that impacts on the health workforce.
SSPAU	Short Stay Paediatric Assessment Unit	Are hospital-based facilities where infants, children and young people with acute illness, injury or other urgent referrals from clinicians can be assessed, investigated, observed and treated with an expectation of discharge in less than 24 hours.

ST-MAX	Short-term care to maximise independence	In a social care setting, short-term care is an episode of time-limited support – for example, reablement – intended to reduce or eliminate the need for ongoing support.
STPs	Sustainability and Transformation Partnerships	Formerly known as sustainability and transformation plans, these partnerships were created in 2016 to bring together local NHS organisations, local authorities and other partners to produce local plans for the future of health and care services. There were originally 44 STPs covering England and these areas are sometimes referred to as ‘footprints’. STPs are now evolving into integrated care systems (ICSs).
SUS	Secondary User Services	Is the single, comprehensive repository for healthcare data in England which enables a range of reporting and analyses to support the NHS in the delivery of healthcare services.
T & O	Trauma and Orthopaedic	Conditions of the musculoskeletal system including bones and joints and structures that enable movement such as ligaments, tendons, muscles and nerves.
TDA	Trust Development Authority	Responsible for overseeing the performance management and governance of NHS Trusts, including clinical quality, and managing their progress towards foundation trust status.
TIA	Transient Ischemic Attack	Or "mini stroke" is caused by a temporary disruption in the blood supply to part of the brain.
TOR	Terms of Reference	Define the purpose and structures of a project, committee, meeting, negotiation, or any similar collection of people who have agreed to work together to accomplish a shared goal.
TSA	Trust Special Administrator	One way in which Monitor can take decisive action to deal with foundation trusts that are, or are likely to become, unable to pay their debts as and when they are due, or are unable to provide services of sufficient quality.
TV Team	Tissue Viability Team	A specialist service for wounds that are taking a long time to heal, such as a surgical wound, leg ulcer or pressure ulcer.
UCC	Urgent Care Centre	If you need urgent medical attention, but it's not a life-threatening situation.
UDA	Units of Dental Activity	The value given to a course of treatment.
UHB	University Hospital Birmingham	https://www.uhb.nhs.uk/
UHDB	University Hospitals of Derby and Burton NHS Foundation Trust	https://www.uhdb.nhs.uk/
UHNM	University Hospitals of North Midlands NHS Trust	https://www.uhnm.nhs.uk/
UK GDPR	UK General Data Protection Regulations	Governs the way in which we can use, process, and store personal data (information about an identifiable, living person). It applies to all organisations within the EU, as well

		as those supplying goods or services to the EU or monitoring EU citizens.
UTC	Urgent Treatment Centre	UTCs are for patients who need to be treated urgently but whose condition is not life-threatening. They are GP-led, open at least 12 hours a day, every day, offer appointments that can be booked through 111 or through a GP referral, and are equipped to diagnose and deal with many of the most common ailments people attend accident and emergency for. Under current plans the term 'urgent treatment centres' will replace existing terms for similar services including urgent care centres, minor injury units and walk-in centres.
WIC	Walk in Centre	National direction to replace with UTCs
WMAS	West Midlands Ambulance Service	https://wmas.nhs.uk/
WMQRS	West Midlands Quality Review Service	Review against standards or clearly defined questions supports organisations improving quality and outcomes.
WMSCG	West Midlands Strategic Commissioning Group	A commissioning collaborative operating under NHSEI responsibilities.
WRES	Workforce Race Equality Standard	Is a requirement for NHS commissioners and NHS healthcare providers including independent organisations, through the NHS standard contract.
WTE	Whole Time Equivalent	Is a unit that indicates the workload of an employed person (or student) in a way that makes workloads or class loads comparable across various contexts.
WUCTAS	Wolverhampton Urgent Care Triage Access Service	Supports the use of alternative pathways in the community, as well as facilitating triage for urgent medical referrals.
YTD	Year to Date	