

Standing Advisory Council on Religious Education
15th February 2011

Report of the Director of Children's Services

An Analysis of Examination Results for Staffordshire Schools 2010

1 Purpose of Report

To present SACRE members with a statistical analysis of the standards achieved in GCSE (Full Course and Short Course), Advanced Level and Advanced Subsidiary GCE Religious Studies by pupils examined in the summer of 2010.

2 Summary

Members of SACRE will receive a graphical analysis of the standards achieved.

3 Recommendation

That members of SACRE receive the report.

That letters be sent on behalf of SACRE to identified schools offering congratulations or support as appropriate.

4 Background

A statistical analysis of the standards achieved by Staffordshire schools in examinations held in summer 2010 is attached to this report.

Key issues identified in the analysis are as follows:

Overall

- a) In 2010 a total of 6952 students were entered for GCSE RS, either Full or Short Course.
- b) A developing trend is for schools to offer both Full and Short Course in Key Stage 4. 23 schools now offer both examinations. 44 out of 55 schools offer the short course, 33 schools also offer the short course.
- c) Overall 76 students were entered for AS level and 212 students for A2 at the end of KS5. There is a rise in the number of entries at AS level

Full Course GCSE

- a) The number of schools entering pupils for the Full Course has remained relatively steady since 2004, with four county schools entering over 50% of pupils for this examination.
- b) The percentage of pupils attaining grades A* to C has risen above the national average for 2010 despite falling below the national average last year. The differential is +1.8 percentage points.
- c) Attracting boys to the course continues to be an issue. The number of girls entered has remained steady however there has been a fall in the number of boys entered this year.

Short Course GCSE

- a) 44 out of 55 Staffordshire secondary schools now enter pupils for the Short Course. The number of entries has risen in 2010.
- b) The number of Staffordshire students gaining the higher grades A* to C continues to be below the national level for boys and girls, the Staffordshire average being 3.6 percentage points below the national figure.

Advanced Subsidiary (AS) GCE

- a) The number of entries at AS level has increased.
- b) Recruitment of boys to the course remains an issue, with the ratio at approximately 3:1 in both years.

- c) The percentage of pupils gaining higher grades remains below the national average.
- d) Attainment in AS level continues to be an issue.

Advanced (A2) GCE

- a) The number of pupils entered for A Level (A2) has fallen slightly in 2010.
- b) Attracting boys to the course remains an issue with the ratio remaining at about 3:1.
- c) At the higher grades Staffordshire pupils continue to attain below the national average.

Teachers and pupils in Staffordshire schools are to be congratulated on their hard work and continued efforts to raise the standard of attainment in the County.

Effective ways to raise standards at all levels are under consideration.

5 Equal Opportunities

This report has been prepared in line with the County Council's policy on Equal Opportunities.

6 Financial Implications

There are no financial implications

Contact Officer:
Telephone Number

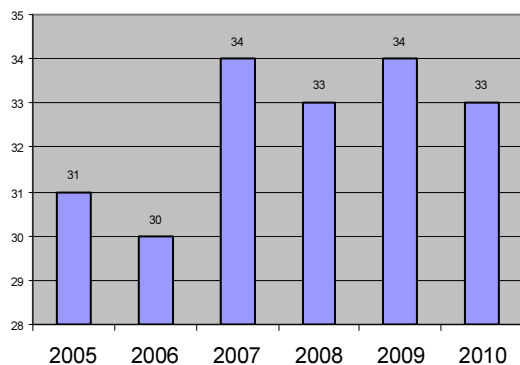
Emma Senior
01785 277997

Full Course GCSE in Religious Studies Results Analysis 2010

National Average A* to C 73.1%

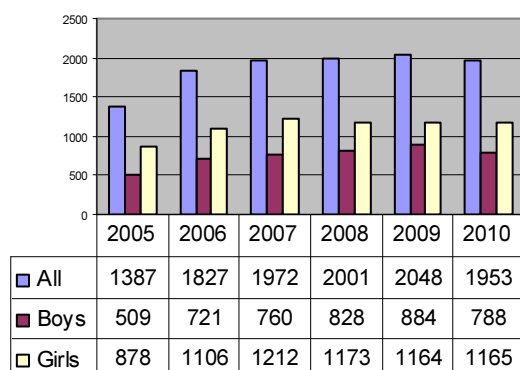
Staffordshire Average A* to C 74.9%

Number of schools entering pupils for GCSE
Full Course



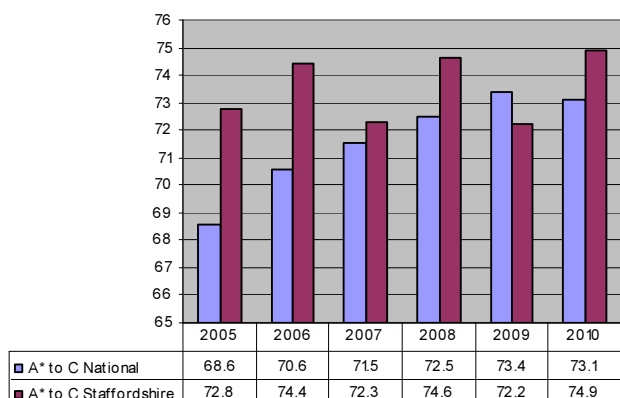
- The number of schools entering pupils for Full Course GCSE fluctuates slightly year on year, and has fallen slightly this year from 34 in 2009 to 33.
- 18 of these schools also enter pupils for Short Course. In some cases this means that all students are offered the opportunity to take an examination appropriate to their commitment and ability. In some only small numbers are catered for, even though both examinations are offered.
- 4 county maintained schools enter more than 50% of students for the full course.

Number of students entered for Full
Course GCSE



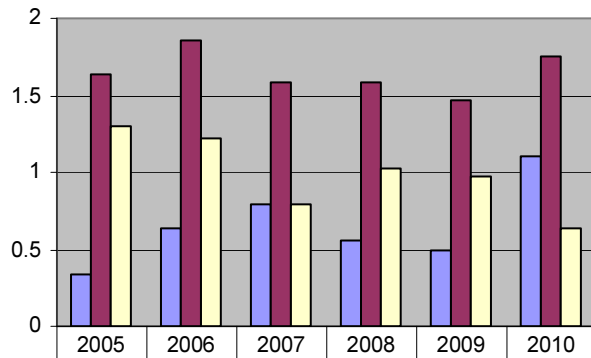
- This year there was a slight fall in the numbers taking the Full Course.
- There was a drop in the number of boys entered in 2010 but the number of girls entered remained steady.
- Some schools are now entering larger groups for the examination, often because they are offering the Full Course option to the more able students who are already following a Short Course. Only 2 schools entered fewer than 10 students, but in 7 schools entries were below 20.

Percentage of students gaining A* to C grades in
Full Course



- The percentage of pupils attaining grades A* to C in Full Course nationally has decreased.
- This year Staffordshire schools have returned to great form bucking the national trend and have performed significantly better than the national average.
- The differential between the national average and the Staffordshire average is 1.8 percentage points.

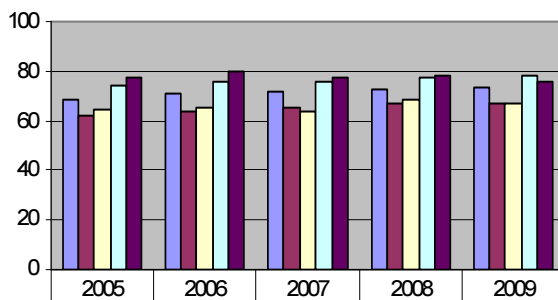
Student referencing Full Course Comparative Performance



| | 2005 | 2006 | 2007 | 2008 | 2009 | 2010 |
|---------------------------------------|------|------|------|------|------|------|
| PR National Difference | 0.34 | 0.64 | 0.79 | 0.56 | 0.49 | 1.11 |
| PR Staffordshire Difference | 1.64 | 1.86 | 1.58 | 1.58 | 1.47 | 1.75 |
| Staffs Relative Performance Indicator | 1.3 | 1.22 | 0.79 | 1.02 | 0.98 | 0.64 |

- Pupils' grades in all subjects are averaged nationally and compared with the average national achievement for RS. The difference (residual) is calculated. In 2010 the residual for RS is 1.11 points, where 6 points represents a grade.
- The same process is followed for Staffordshire results in all subjects. In 2010 the residual for RS is 1.75.
- This calculation indicates that, in 2010, pupils nationally and on average attain a slightly higher grade in Full Course RS than in the other subjects they take. This trend is matched in Staffordshire.
- Staffordshire pupils' relative performance in RS has been consistently better than the national figure.
- In 2010 Staffordshire pupils' results on average were approximately $\frac{1}{6}$ of a grade higher than national expectations.

Attainment by gender Full Course



| | 2005 | 2006 | 2007 | 2008 | 2009 |
|-----------------------------|------|------|------|------|------|
| A* to C National | 68.6 | 70.6 | 71.5 | 72.5 | 73.4 |
| A* to C Boys National | 61.7 | 63.8 | 65.4 | 66.7 | 67.1 |
| A* to C Boys Staffordshire | 64.8 | 65.6 | 63.9 | 68.8 | 66.9 |
| A* to C Girls National | 73.9 | 75.8 | 76.2 | 77.1 | 78.5 |
| A* to C Girls Staffordshire | 77.4 | 80.2 | 77.6 | 78.6 | 76.2 |

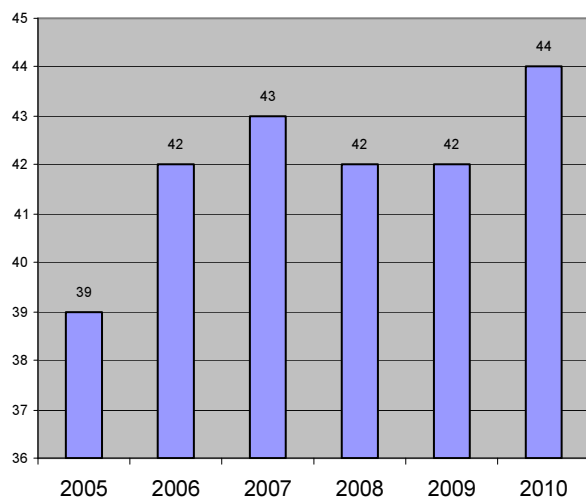
- In 2010, boy's achievement is below the national average for all pupils and slightly below the national average for boys.
- Girls achievement is above the national average for all pupils but slightly below the national average for girls.

Short Course GCSE in Religious Studies Results Analysis 2010

National Average A* to C 54.6%

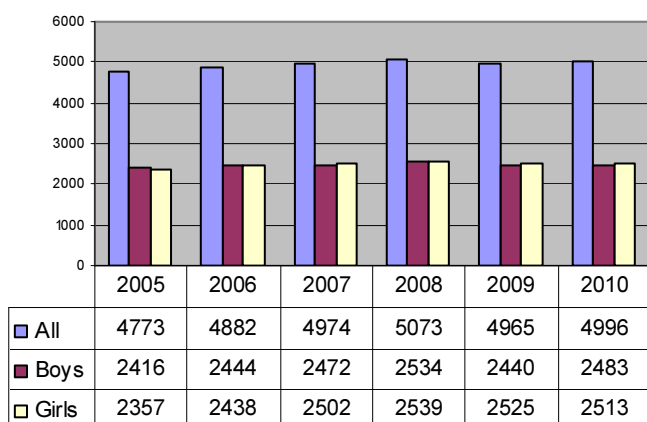
Staffordshire Average A* to C 51%

Number of schools entering students for Short Course GCSE



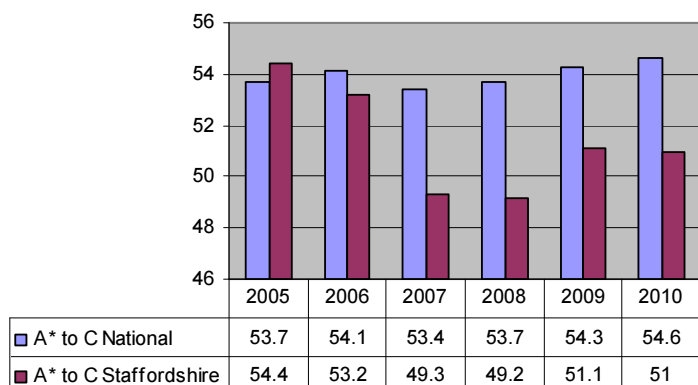
- The number of schools entering students for Short Course RS has remained steady, with only slight variation, since 2005.
- 44 out of Staffordshire's 55 secondary schools entered pupils for the Short Course GCSE in 2009.
- 18 of these schools also enter students for Full Course.

Number of students entered for Short Course GCSE



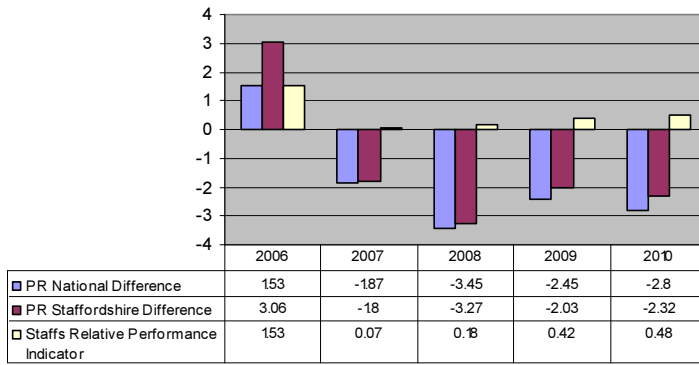
- The number of pupils entered for the Short Course GCSE RS has risen in 2010, although figures have been steady with only slight variation over the last 3 years.
- There is little significant difference between the number of boys entered for the examination and the number of girls.

Percentage of students gaining A* to C for Short Course GCSE



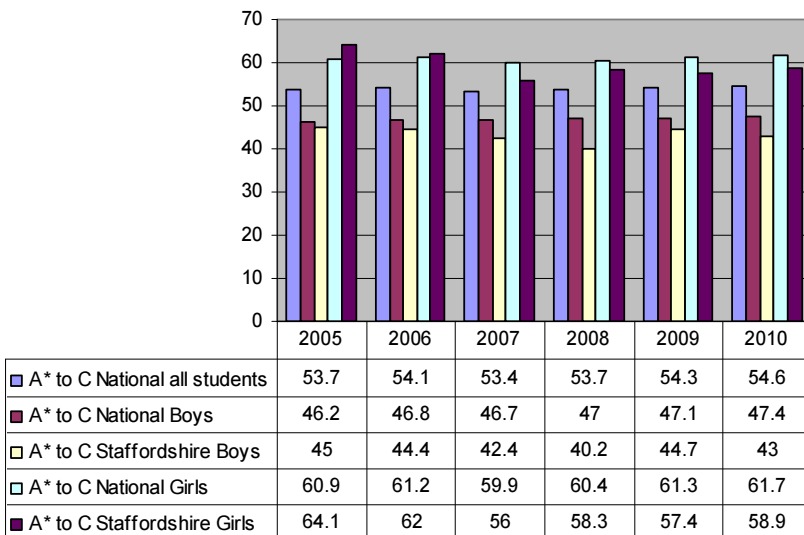
- There has been a slight increase in the national average for 2010 but Staffordshire's average has remained steady.
- The Staffordshire average in 2010 is below the national level by 3.5 percentage points, a slight increase on 2009.
- In general this may be because more schools are entering a higher proportion of more able students for Full Course leaving pupils of a lower average ability to take the Short Course

Student referencing Short Course GCSE Comparative Performance



- Pupils' grades for all subjects are averaged nationally and compared with the average national achievement for RS. The difference (residual) is calculated. In 2010 the residual for Short Course nationally is -2.8 points.
- This means that, overall, pupils perform slightly lower than the average in short course RS by comparison with the other subjects they take.
- In 2010 the Staffordshire County residual was slightly better than the national at -2.32. This indicates that, on average, Staffordshire students taking Short Course RS attain slightly less than a grade lower than in the other subjects they take.

Attainment by gender for Short Course GCSE



- The percentage of girls achieving grades A* to C is higher than the national average for all pupils but below that for girls in 2010.
- The percentage of boys attaining the higher grades is lower than the national average for all pupils and for Staffordshire boys.

Advanced Subsidiary (AS) GCE in Religious Studies Results Analysis 2010

National Average A to C

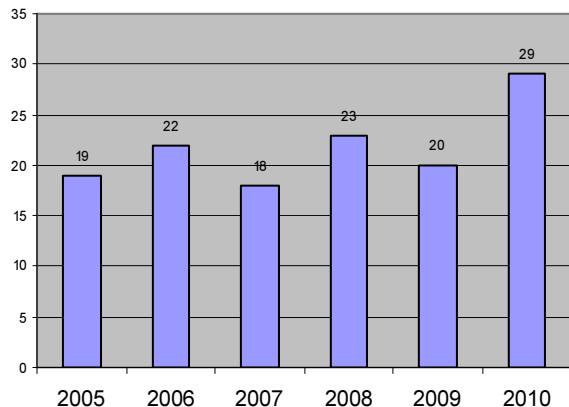
67.6%

Staffordshire Average A to C

46.1%

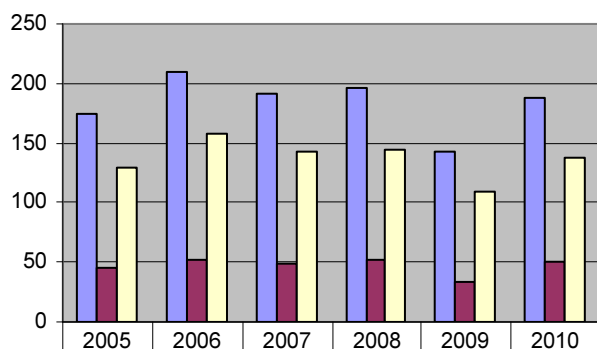
Year 12

No of schools entering students for AS in Year 12



- The number of schools entering students for AS in Year 12 has increased this year.

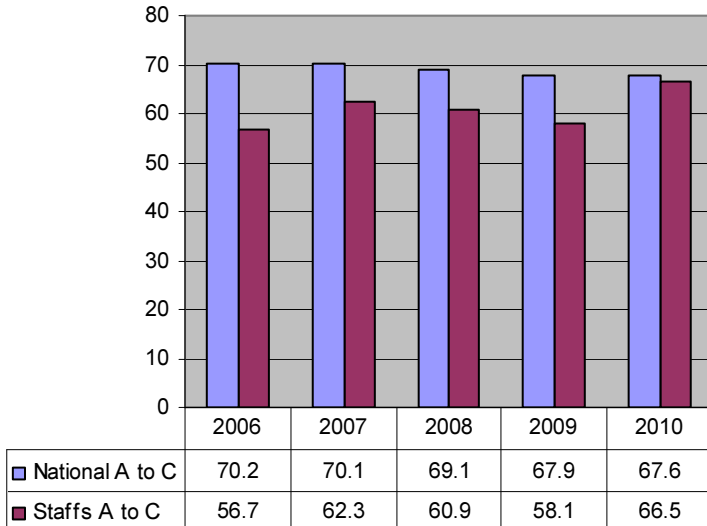
Number of students entered for Advanced Level AS in Year 12



- Following a decrease in entries last year the number of students entered for AS in Year 12 has risen in line with previous years.
- Girls continue to outnumber boys by a ratio of approximately 3:1

| | 2005 | 2006 | 2007 | 2008 | 2009 | 2010 |
|------------------|------|------|------|------|------|------|
| Candidates All | 174 | 210 | 191 | 197 | 143 | 188 |
| Candidates Boys | 45 | 52 | 49 | 52 | 34 | 50 |
| Candidates Girls | 129 | 158 | 142 | 145 | 109 | 138 |

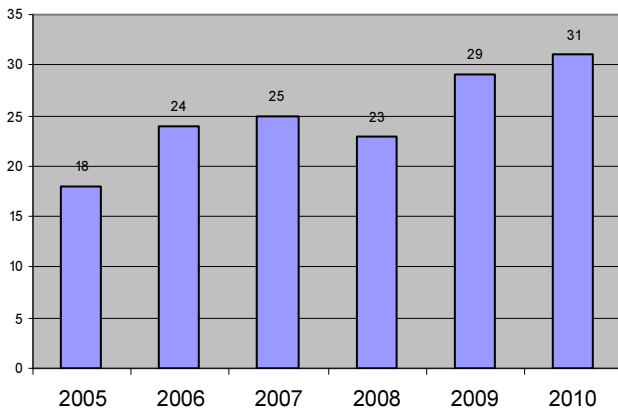
Percentage of students gaining A to C grades in Year 12



- This analysis is only available for 2006 to 2010 as in previous years the higher grades were taken to be A and B only
- Results in Staffordshire continue to fall below the national average but the gap has lessened in 2010.

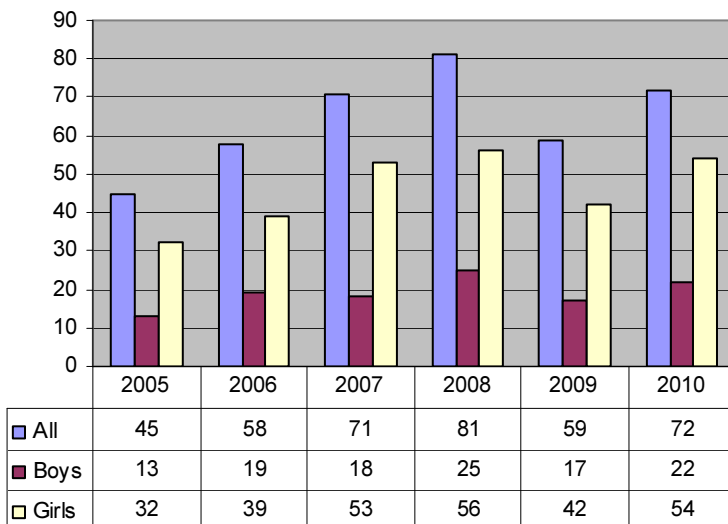
Year 13

Number of schools entering pupils in Year 13 for Advanced Level AS



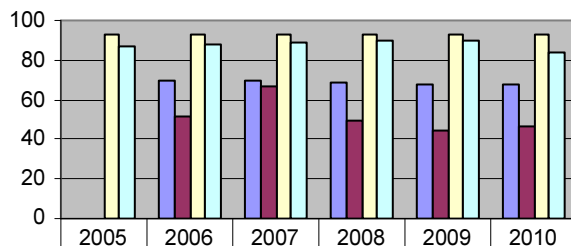
- The number of schools entering students for AS Level in Year 13 has increased in 2010

Number of students entered in Year 13 for AS Level



- The number of entries for 2010 has increased following a decrease in 2009.
- The ratio of girls to boys remains approximately 3:1
- The size of the sample makes it difficult to identify significant trends.

**Percentage of students gaining A to C and A to E grades
in Year 13 AS Level**



| | 2005 | 2006 | 2007 | 2008 | 2009 | 2010 |
|----------------------|------|------|------|------|------|------|
| A to C National | | 70.2 | 70.1 | 69.1 | 67.9 | 67.6 |
| A to C Staffordshire | | 51.7 | 66.7 | 49.4 | 44.1 | 46.1 |
| A to E National | 92.6 | 93.4 | 93.3 | 93.3 | 92.6 | 92.5 |
| A to E Staffordshire | 86.6 | 87.9 | 88.7 | 90.1 | 89.8 | 84.2 |

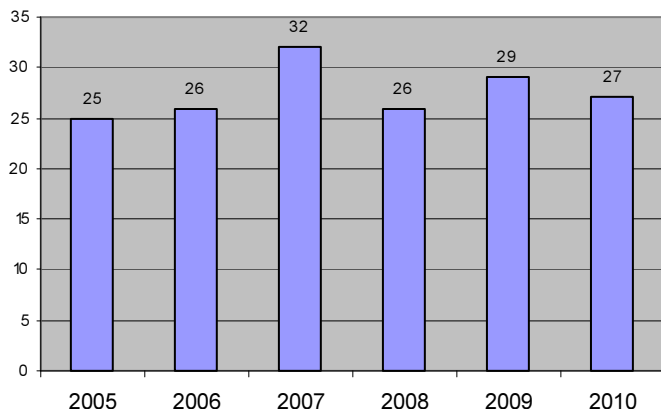
- The analysis at Grades A to C is only available for 2006 to 2008 as in previous years the higher grades were taken to be A and B only
- The percentage of pupils in Staffordshire attaining grades A to C is significantly lower than the percentage nationally.
- The percentage of pupils in Staffordshire attaining grades A to E is lower than the percentage of pupils nationally.
- Achievement at the higher grades remains an issue.

Advanced Level (A2) GCE in Religious Studies Results Analysis 2010

National Average A to C 78.2 %

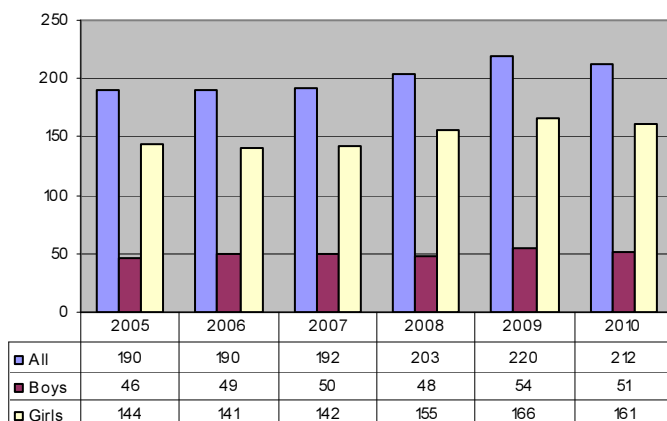
Staffordshire Average A to C 66.1 %

Number of schools entering pupils for Advanced Level A2



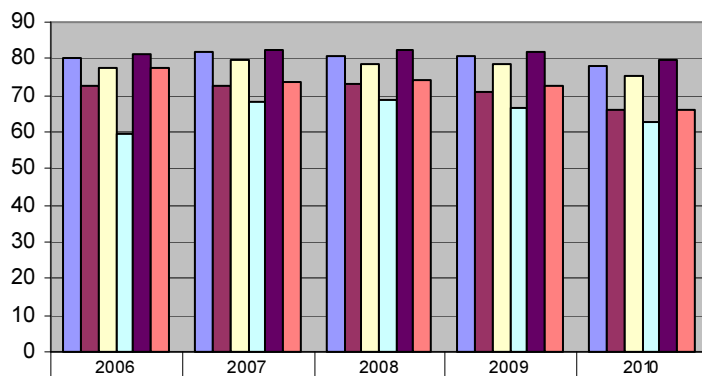
- The number of schools entering students for Advanced Level (A2) RS fluctuates slightly from year to year.
- 27 schools entered students in 2009.

Number of students entered for Advanced Level (A2)



- The number of Staffordshire pupils entered for Advanced Level (A2) decreased slightly in 2010.
- The ratio of girls to boys is approximately 3:1

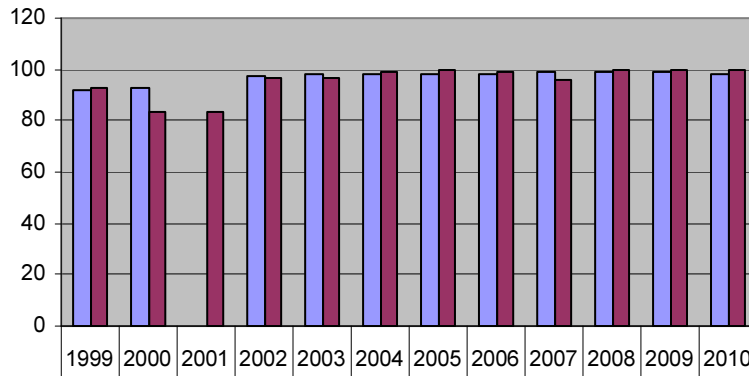
Percentage of students gaining A to C grades at Advanced Level (A2)



- This analysis is only available for 2006 to 2010 as in previous years the higher grades have been taken to be A and B.
- Staffordshire attainment falls below the national average by 12.1 percentage points.
- Both boys and girls fall below the national averages for their gender.
- This remains an issue

| | | | | | |
|----------------------------|------|------|------|------|------|
| A to C National | 80.2 | 81.6 | 80.9 | 81 | 78.2 |
| A to C Staffordshire | 72.6 | 72.4 | 72.9 | 70.9 | 66.1 |
| A to C Boys National | 77.6 | 79.5 | 78.6 | 78.8 | 75.2 |
| A to C Boys Staffordshire | 59.2 | 68 | 68.8 | 66.7 | 62.7 |
| A to C Girls National | 81.4 | 82.6 | 82.1 | 82 | 79.6 |
| A to C Girls Staffordshire | 77.3 | 73.9 | 74.2 | 72.3 | 65.8 |

**Percentage of students gaining A to E grades
at Advanced Level (A2)**



- For the second time in three years Staffordshire students have achieved 100% A-E grades meaning that every student entered achieved a grade.
- This is above the national average.

| | | | | | | | | | | | | |
|------------------------|------|----|----|------|------|------|------|------|------|------|------|------|
| ■ A to E National | 92.2 | 93 | | 97.6 | 97.9 | 98.3 | 98.4 | 98.4 | 98.7 | 98.6 | 98.6 | 98.3 |
| ■ A to E Staffordshire | 92.7 | 83 | 83 | 96.9 | 96.3 | 99.2 | 99.5 | 98.9 | 96 | 100 | 99.5 | 100 |

Staffordshire schools performing well

GCSE Full Course

| School | Board | Entries | Well above national Average A* to C (73.1%) | Well above average mean points for county (42.4) | Significantly positive residual (National 0.06) |
|---|---------|---------|---|--|---|
| Alleyne's High School | AQA | 111 | 96.4 | 46.8 | |
| Cannock Chase High School | OCR | 10 | 80.0 | | |
| Codsall Community High School | OCR | 31 | 100 | 47.7 | |
| Endon High School | OCR | 96 | 83.3 | | |
| John Taylor High School | OCR | 77 | 100 | 50.4 | |
| NCHS The Science College | AQA | 34 | 91.2 | | |
| Paulet High School | EDEXCEL | 10 | 100 | 50.2 | |
| Queen Elizabeth's Mercian High School | OCR | 50 | 88 | 47.1 | 6.68 |
| Sir Graham Balfour High School | EDEXCEL | 16 | 81.3 | | |
| Sir Thomas Boughey High School | OCR | 6 | 100 | 51 | |
| Thomas Alleyne's High School | AQA | 55 | 83.6 | | |
| Westwood College | OCR | 59 | 84.7 | 46.2 | |
| Wilnecote High School | OCR | 42 | 83.3 | | |
| Wolstanton High School | OCR | 38 | 92.1 | 47.6 | 5.22 |
| Woodhouse Business and Enterprise College | OCR | 60 | 90 | 48 | |

Staffordshire schools causing concern

GCSE Full Course

| School | Board | Entries | Well below national Average A* to C (73.1%) | Well below average mean points for county (42.4) | Significantly negative residual (National 0.06) |
|-------------------------------------|-------|---------|---|--|---|
| Chase Terrace Technology College | OCR | 44 | | | -5.28 |
| Chesterton Community Sports College | OCR | 10 | 40 | | |
| De Ferrers Specialist Tech. College | OCR | 37 | 35.1 | | |
| Kingsmead Technology College | OCR | 16 | 37.5 | | |
| Nether Stowe School | OCR | 74 | 35.1 | | -6.69 |
| Maryhill High School | OCR | 34 | 41.2 | 34.2 | -4.91 |

Staffordshire schools performing well

GCSE Short Course

| School | Board | Entries | Well above national average A* to C (54.6) | Well above average points for county (18.0) | Significantly positive residual (National -2.80) |
|--|---------|---------|--|---|--|
| Cannock Chase High School | OCR | 129 | 84.2 | 22.8 | 3.48 |
| Cheslyn Hay Sports and Community High School | OCR | 204 | 73.0 | 20.8 | |
| Clayton Hall Business and Language College | OCR | 186 | 60.8 | 20.5 | |
| Edgecliff | OCR | 114 | 60.5 | | |
| Great Wyrley Performing Arts High School | OCR | 180 | 61.1 | | |
| Madeley High School | OCR | 108 | 90.7 | 23.3 | 3.43 |
| Ounsdale High School | EDEXCEL | 17 | 100 | 25.1 | 2.83 |
| The Friary School | EDEXCEL | 210 | 61.9 | | |
| Walton High School | OCR | 205 | 73.2 | 20.8 | |
| Weston Road High School | OCR | 155 | 72.3 | 22.5 | 5.23 |

Staffordshire schools causing concern

GCSE Short Course

| School | Board | Entries | Well below national average A* to C (54.6) | Well below average points for county (18.0) | Significantly negative residual (County -2.80) |
|---|-------|---------|--|---|--|
| Blake Valley Technology College | AQA | 63 | 14.3 | 12.8 | |
| Blyth Bridge High School and Sixth Form | | | | | -11.20 |
| Clough Hall Technology College | OCR | 46 | 13.0 | 13.4 | -12.83 |
| Hagley Park Sports College | OCR | 125 | 18.4 | 13.7 | -9.11 |
| Leek High Specialist Tech School | OCR | 88 | 17.0 | 12.3 | |
| Nether Stowe School | OCR | 25 | 8.0 | 7.8 | -10.49 |
| Stafford Sports College | OCR | 47 | 14.9 | 14.0 | -8.56 |

| | | | | | |
|---|-----|-----|------|------|--|
| Woodhouse Business and Enterprise College | OCR | 114 | 20.2 | 18.0 | |
|---|-----|-----|------|------|--|

Staffordshire schools performing well

AS level

| School | Entries | Well above national Average A* to C (67.6) |
|--|---------|--|
| Cannock Chase High a Specialist Science School | 1 | 100 |
| Edgecliffe High School, Kinver | 2 | 100 |
| John Taylor High School | 3 | 100 |
| Thomas Alleyne's High School | 1 | 100 |
| Westwood College | 1 | 100 |
| Queen Elizabeth's Mercian School | 4 | 75 |

Staffordshire schools performing well

A2 level

| School | Entries | Well above national Average A* to C (78.2) |
|----------------------------------|---------|--|
| Codsall Community High School | 7 | 85.7 |
| John Taylor High School | 15 | 86.7 |
| King Edward VI School, Lichfield | 8 | 87.5 |
| The Friary School, Lichfield | 14 | 78.5 |
| Thomas Alleyne's High School | 9 | 100 |
| Walton High School | 1 | 100 |