

**Standing Advisory Council on Religious Education**  
**17<sup>th</sup> November 2010**  
**Report of the Corporate Director (Children and Lifelong Learning)**  
**An Analysis of Examination Results for Staffordshire Schools 2010**

## **1 Purpose of Report**

To present SACRE members with a statistical analysis of the standards achieved in GCSE (Full Course and Short Course), Advanced Level and Advanced Subsidiary GCE Religious Studies by pupils examined in the summer of 2010.

## **2 Summary**

Members of SACRE will receive a graphical analysis of the standards achieved.

## **3 Recommendation**

That members of SACRE receive the report.

That letters be sent on behalf of SACRE to identified schools offering congratulations or support as appropriate.

## **4 Background**

A statistical analysis of the standards achieved by Staffordshire schools in examinations held in summer 2010 is attached to this report.

Key issues identified in the analysis are as follows:

### Overall

- a) In 2010 a total of 6952 students were entered for GCSE RS, either Full or Short Course.
- b) A developing trend is for schools to offer both Full and Short Course in Key Stage 4. 45 out of 55 schools offer the short course, 33 schools offer the full course. 22 schools now offer both examinations.

### Full Course GCSE

- a) The number of schools entering pupils for the Full Course has remained relatively steady since 2004, with four county schools entering over 50% of pupils for this examination.
- b) The percentage of pupils attaining grades A\* to C has risen above the national average for 2010 despite falling below the national average last year. The differential is +1.8 percentage points.
- c) Attracting boys to the course continues to be an issue. The number of girls entered has remained steady however there has been a fall in the number of boys entered this year.

### Short Course GCSE

- a) 45 out of 55 Staffordshire secondary schools now enter pupils for the Short Course. The number of entries has risen in 2010.
- b) The number of Staffordshire students gaining the higher grades A\* to C continues to be below the national level for both boys and girls, the Staffordshire average being 3.6 percentage points below the national figure.

Teachers and pupils in Staffordshire schools are to be congratulated on their hard work and continued efforts to raise the standard of attainment in the County.

Effective ways to raise standards at all levels are under consideration.

## **5 Equal Opportunities**

This report has been prepared in line with the County Council's policy on Equal Opportunities.

## **6 Financial Implications**

There are no financial implications

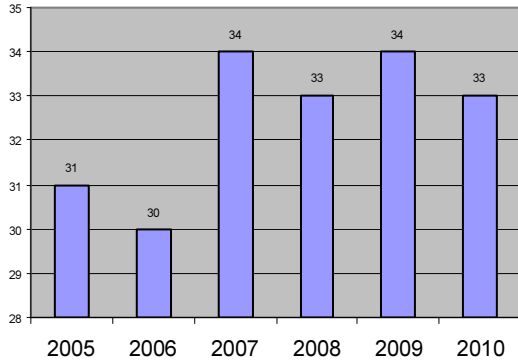
Contact Officer:	Emma Senior
Telephone Number	01785 277997

## Full Course GCSE in Religious Studies Results Analysis 2010

National Average A\* to C 73.1%

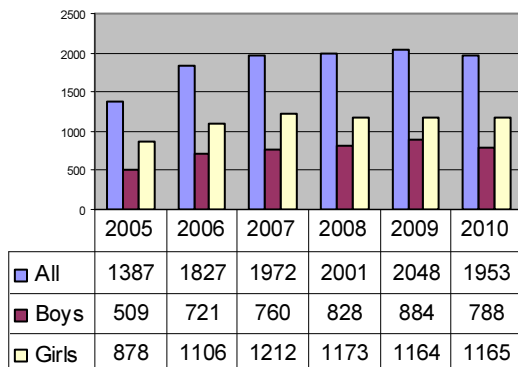
Staffordshire Average A\* to C 74.9%

Number of schools entering pupils for GCSE  
Full Course



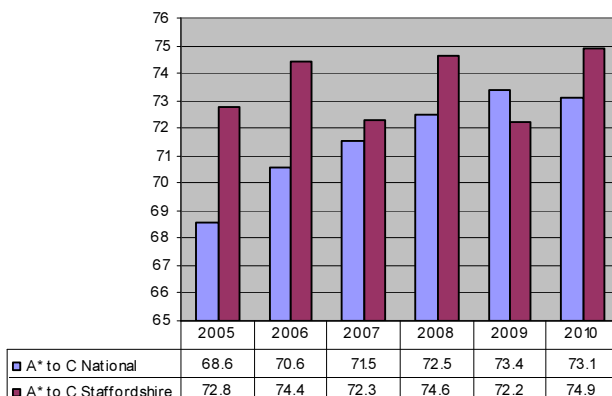
- The number of schools entering pupils for Full Course GCSE fluctuates slightly year on year, and has fallen slightly this year from 34 in 2009 to 33.
- 18 of these schools also enter pupils for Short Course. In some cases this means that all students are offered the opportunity to take an examination appropriate to their commitment and ability. In some only small numbers are catered for, even though both examinations are offered.
- 4 county maintained schools enter more than 50% of students for the full course.

Number of students entered for Full  
Course GCSE



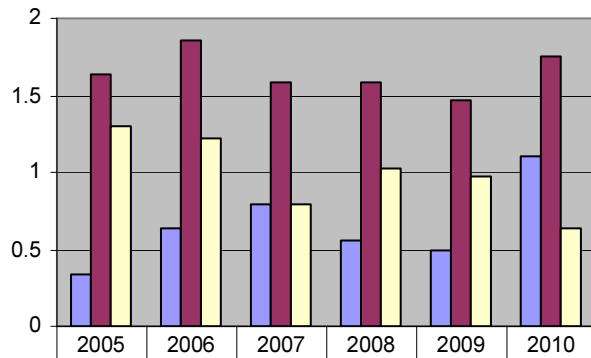
- This year there was a slight fall in the numbers taking the Full Course.
- There was a drop in the number of boys entered in 2010 but the number of girls entered remained steady.
- Some schools are now entering larger groups for the examination, often because they are offering the Full Course option to the more able students who are already following a Short Course. Only 2 schools entered fewer than 10 students, but in 7 schools entries were below 20.

Percentage of students gaining A\* to C grades in  
Full Course



- The percentage of pupils attaining grades A\* to C in Full Course nationally has decreased.
- This year Staffordshire schools have returned to great form bucking the national trend and have performed significantly better than the national average.
- The differential between the national average and the Staffordshire average is 1.8 percentage points.

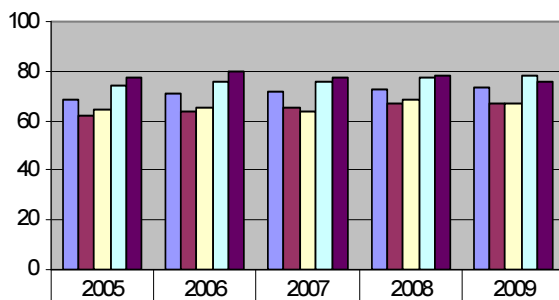
### Student referencing Full Course Comparative Performance



PR National Difference	0.34	0.64	0.79	0.56	0.49	1.11
PR Staffordshire Difference	1.64	1.86	1.58	1.58	1.47	1.75
Staffs Relative Performance Indicator	1.3	1.22	0.79	1.02	0.98	0.64

- Pupils' grades in all subjects are averaged nationally and compared with the average national achievement for RS. The difference (residual) is calculated. In 2010 the residual for RS is 1.11 points, where 6 points represents a grade.
- The same process is followed for Staffordshire results in all subjects. In 2010 the residual for RS is 1.75.
- This calculation indicates that, in 2010, pupils nationally and on average attain a slightly higher grade in Full Course RS than in the other subjects they take. This trend is matched in Staffordshire.
- Staffordshire pupils' relative performance in RS has been consistently better than the national figure.
- In 2010 Staffordshire pupils' results on average were approximately  $\frac{1}{6}$  of a grade higher than national expectations.

### Attainment by gender Full Course



A* to C National	68.6	70.6	71.5	72.5	73.4
A* to C Boys National	61.7	63.8	65.4	66.7	67.1
A* to C Boys Staffordshire	64.8	65.6	63.9	68.8	66.9
A* to C Girls National	73.9	75.8	76.2	77.1	78.5
A* to C Girls Staffordshire	77.4	80.2	77.6	78.6	76.2

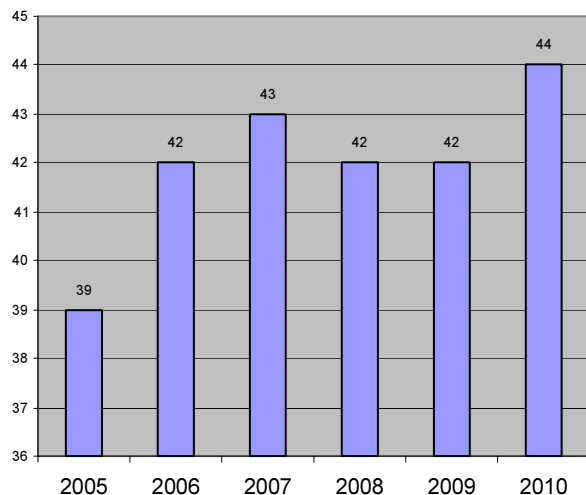
- In 2010, boy's achievement is below the national average for all pupils and slightly below the national average for boys.
- Girls achievement is above the national average for all pupils but slightly below the national average for girls.

## Short Course GCSE in Religious Studies Results Analysis 2010

National Average A\* to C **54.6%**

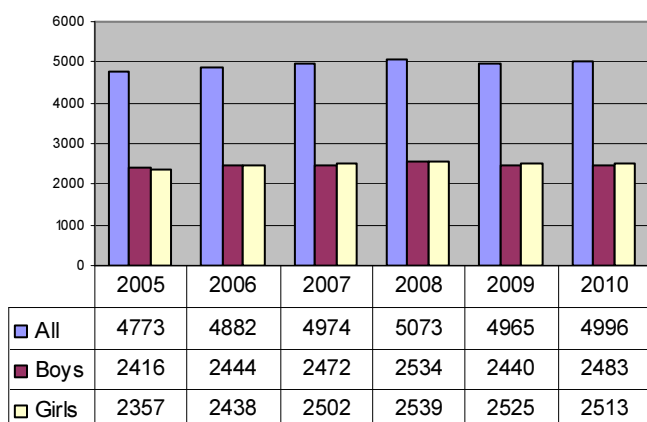
Staffordshire Average A\* to C **51%**

**Number of schools entering students for Short Course GCSE**



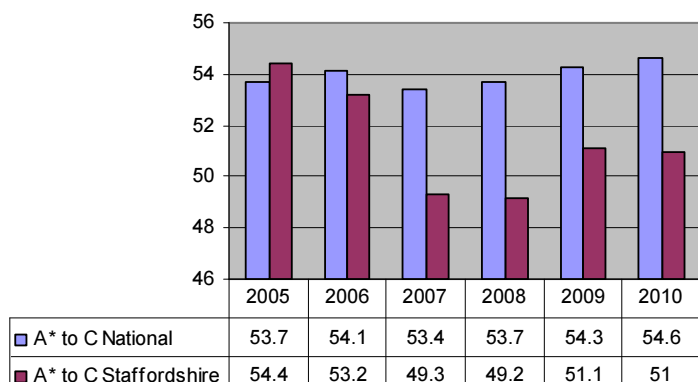
- The number of schools entering students for Short Course RS has remained steady, with only slight variation, since 2006.
- 44 out of Staffordshire's 55 secondary schools entered pupils for the Short Course GCSE in 2010.
- 18 of these schools also enter students for Full Course.

**Number of students entered for Short Course GCSE**



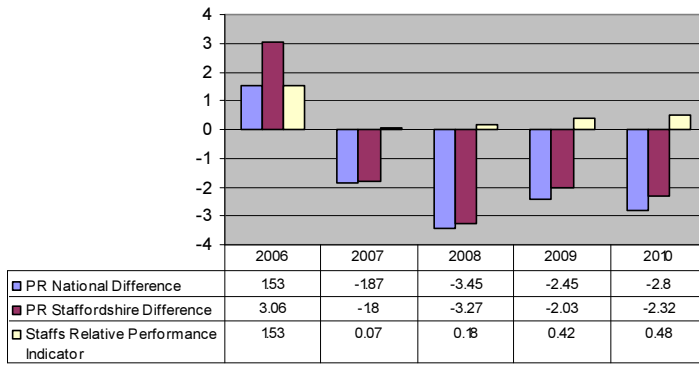
- The number of pupils entered for the Short Course GCSE RS has risen in 2010, although figures have been steady with only slight variation over the last 3 years.
- There is little significant difference between the number of boys entered for the examination and the number of girls.

**Percentage of students gaining A\* to C for Short Course GCSE**



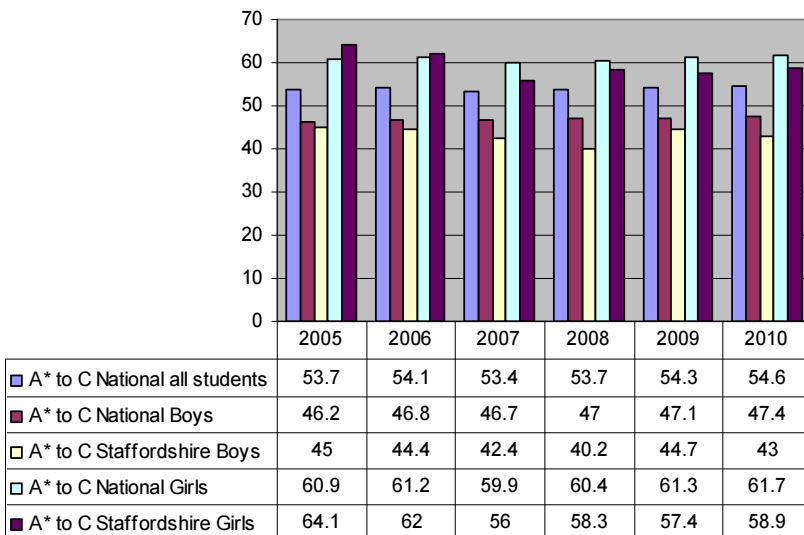
- There has been a slight increase in the national average for 2010 but Staffordshire's average has remained steady.
- The Staffordshire average in 2010 is below the national level by 3.5 percentage points, a slight increase on 2009.
- In general this may be because more schools are entering a higher proportion of more able students for Full Course leaving pupils of a lower average ability to take the Short Course

### Student referencing Short Course GCSE Comparative Performance



- Pupils' grades for all subjects are averaged nationally and compared with the average national achievement for RS. The difference (residual) is calculated. In 2010 the residual for Short Course nationally is -2.8 points.
- This means that, overall, pupils perform slightly lower than the average in short course RS by comparison with the other subjects they take.
- In 2010 the Staffordshire County residual was slightly better than the national at -2.32. This indicates that, on average, Staffordshire students taking Short Course RS attain slightly less than a grade lower than in the other subjects they take.

### Attainment by gender for Short Course GCSE



- The percentage of girls achieving grades A\* to C is higher than the national average for all pupils but below that for girls in 2010.
- The percentage of boys attaining the higher grades is lower than the national average for all pupils and for Staffordshire boys.



## Staffordshire schools performing well

### GCSE Full Course

School	Board	Entries	Well above national Average A* to C (73.1%)	Well above average mean points for county (42.4)	Significantly positive residual (National 0.06)
Alleyne's High School	AQA	111	96.4	46.8	
Cannock Chase High School	OCR	10	80.0		
Codsall Community High School	OCR	31	100	47.7	
Endon High School	OCR	96	83.3		
John Taylor High School	OCR	77	100	50.4	
NCHS The Science College	AQA	34	91.2		
Paulet High School	EDEXCEL	10	100	50.2	
Queen Elizabeth's Mercian High School	OCR	50	88	47.1	6.68
Sir Graham Balfour High School	EDEXCEL	16	81.3		
Sir Thomas Boughey High School	OCR	6	100	51	
Thomas Alleyne's High School	AQA	55	83.6		
Westwood College	OCR	59	84.7	46.2	
Wilnecote High School	OCR	42	83.3		
Wolstanton High School	OCR	38	92.1	47.6	5.22
Woodhouse Business and Enterprise College	OCR	60	90	48	

## Staffordshire schools causing concern

### GCSE Full Course

School	Board	Entries	Well below national Average A* to C (73.1%)	Well below average mean points for county (42.4)	Significantly negative residual (National 0.06)
Chase Terrace Technology College	OCR	44			-5.28
Chesterton Community Sports College	OCR	10	40		
De Ferrers Specialist Tech. College	OCR	37	35.1		
Kingsmead Technology College	OCR	16	37.5		
Nether Stowe School	OCR	74	35.1		-6.69
Maryhill High School	OCR	34	41.2	34.2	-4.91



## Staffordshire schools performing well

### GCSE Short Course

School	Board	Entries	Well above national average A* to C (54.6)	Well above average points for county (18.0)	Significantly positive residual (National -2.80)
Cannock Chase High School	OCR	129	84.2	22.8	3.48
Cheslyn Hay Sports and Community High School	OCR	204	73.0	20.8	
Clayton Hall Business and Language College	OCR	186	60.8	20.5	
Edgecliff	OCR	114	60.5		
Great Wyrley Performing Arts High School	OCR	180	61.1		
Madeley High School	OCR	108	90.7	23.3	3.43
Ounsdale High School	EDEXCEL	17	100	25.1	2.83
The Friary School	EDEXCEL	210	61.9		
Walton High School	OCR	205	73.2	20.8	
Weston Road High School	OCR	155	72.3	22.5	5.23

## Staffordshire schools causing concern

### GCSE Short Course

School	Board	Entries	Well below national average A* to C (54.6)	Well below average points for county (18.0)	Significantly negative residual (County -2.80)
Blake Valley Technology College	AQA	63	14.3	12.8	
Blyth Bridge High School and Sixth Form					-11.20
Clough Hall Technology College	OCR	46	13.0	13.4	-12.83
Hagley Park Sports College	OCR	125	18.4	13.7	-9.11
Leek High Specialist Tech School	OCR	88	17.0	12.3	
Nether Stowe School	OCR	25	8.0	7.8	-10.49
Stafford Sports College	OCR	47	14.9	14.0	-8.56

Woodhouse Business and Enterprise College	OCR	114	20.2	18.0	
---	-----	-----	------	------	--

### Staffordshire schools performing well

#### AS level

School	Board	Entries	Well above national Average A* to C (70.2)	Well above average points for county (95.29)
John Taylor High School	EDEXCEL	18	72.2	107.5
King Edward VI Lichfield	OCR	14	71.4	103.93
Maryhill High School	EDEXCEL	5	80.0	108.00
Walton High School	EDEXCEL	10	80.0	
Weston Road High School	EDEXCEL	3	100	

### Staffordshire schools performing well

#### A2 level

School	Board	Entries	Well above national Average A* to C (81.0)	Well above average points for county (214.58)
Wolgarston High School		1	100	