

**Standing Advisory Council on Religious Education**

Tuesday, 15 February 2011

**2.00 pm**

Kingston Centre, Fairway, Stafford ST16 3TW

John Tradewell  
Director of Law and Democracy  
7 February 2011

---

**A G E N D A**

1. **Apologies**
2. **Declaration of Any other Business**
3. **Minutes of the Previous Meeting** (Pages 1 - 6)
4. **RE and the Holocaust Education Trusts "Lessons from Auschwitz project"** (Pages 7 - 8)  
  
Report of the Director of Children's Services and presentation by Lizzie Jolley and Katie Dable from Alleyne's High School
5. **The New Education Bill** (Pages 9 - 10)  
  
Report of Chairman's Action
6. **An Update on Key Issues** (Pages 11 - 12)  
  
Report of the Director of Children's Services
7. **NASACRE Update**  
  
Oral Update by the Chairman
8. **Interfaith week events in November 2010** (Pages 13 - 14)



Report of the Director of Children's Services

9. **Celebrate RE March 2011: Staffordshire Initiatives** (Pages 15 - 16)

Report of the Director of Children's Services

10. **Examination Results debrief 2009-2010** (Pages 17 - 30)

Report of the Director of Children's Services

11. **Any Other Business**

12. **Dates of future meetings:**

Friday 17 June 2011, 2.00 pm

Tuesday 18 October 2011, 2.00 pm

Tuesday 7 February 2012, 2.00 pm

Tuesday 15 May 2012, 2.00 pm

#### **Membership**

Rummy Bajaj	Sue Blackmore
Christine Chadwick	Mary Gale
G Devadason	Colin Hopkins
Lynn Godden	Rosemary Woodward
Hifsa Haroon-Iqbal	Catherine Brandrick
Rev. Preb. M. Metcalf (Chairman)	Dorothy Kirkham
Karen Knobbs	Dave Lyons
Dr Laow	Peter Davies
Sydney Morris	Veronica Downes
Liz O'Brien	Terry Finn
Muhammad Parekh	Ivan Jennings
Sam Phillips	Liz Staples
Gurmeet Singh	Tricia Budd
Bill Walley	Frankie Durairatnam

## MINUTES

### Standing Advisory Council on Religious Education Meeting - 17 November 2010

Present: Rev. Preb. M. Metcalf

Rummy Bajaj, Dr Laow, Liz O'Brien, Muhammad Parekh, Sam Phillips, Mary Gale, Colin Hopkins, Rosemary Woodward, Peter Davies, Veronica Downes, Liz Staples and Frankie Durairatnam

Apologies for absence: Christine Chadwick, Hifsa Haroon-Iqbal, Karen Knobbs, Sydney Morris, Sue Blackmore, Dave Lyons, Terry Finn, Ivan Jennings and Tricia Budd

## PART ONE

### 1. Election of Chairman and Vice Chairman

**RESOLVED** – That Rev Preb Michael Metcalf and Hifsa Haroon-Iqbal be elected as Chairman and Vice-Chairman respectively for the ensuing year.

### 2. Minutes of the Meeting held on 17 May 2010

**RESOLVED** – That, with the inclusion of Rev Preb Michael Metcalf on attendance, the minutes of the meeting held on 17 May 2010 be confirmed and signed by the Chairman.

### 3. An Update on Key Issues

SACRE received an update on key issues that had developed or arisen since their last meeting. The issues included:

- i. Recruitment and retention of RE teachers (SACRE were made aware of a newly qualified teacher (NQT) appointment, at a Staffordshire school, to the post of Head of RE and raised some concerns that the teacher had not as yet accessed any of the available support offered by the Senior Adviser e.g. attendance at NQT or RE secondary network meetings);
- ii. Subject focused inspections of Cheslyn Hay Sport and Community High Schools, Belgrave High School and Crackley Bank Primary School;
- iii. Farmington Fellowship for Bev Young from Thomas Alleyne's High School, Uttoxeter (members also heard that Dawn Shenton from Rycroft Middle School and Janet Young from the Lichfield Special Schools had also received a Fellowship);
- iv. SHAP calendar and story book offer (members were also informed that many resources from "RE Today" were available to Staffordshire teachers of RE at discounted prices); and,

- v. An update on the suggested membership approach by Shahid Hussain from the Muslim community of Burton-upon-Trent.

**RESOLVED** – That the report be noted.

#### **4. NASACRE Update**

The Chairman gave an oral update on recent NASACRE developments, including:

- a) there was some uncertainty over the way the Government policy was developing and how this would impact on RE in schools, Local Authorities (LA) and SACREs;
- b) there was a move towards not re-appointing RE advisors or appointing on a temporary basis. SACRE was a statutory body and the RE advisor was key in supporting the work of the SACRE as well as the vital role they played within schools;
- c) Celebrate RE was a NASACRE event taking place on 31 March 2011 in Birmingham on the theme of “Whose RE is it anyway?”

**RESOLVED** – That the oral update be noted.

#### **5. Monitoring of Primary School Provision 2009-2010**

Monitoring questionnaires had been circulated to secondary and middle schools for a number of years and from 2005 they had formed the main source of information on the provision of RE in Staffordshire Schools. Questionnaires had also been circulated to primary schools since 2006 on a three-year rolling programme, with approximately 100 schools being contacted each year.

Whilst members accepted that statistically the number of responses they had received was a reasonable response rate they were disappointed that more primary schools had not completed the questionnaires. In the process next year members asked that follow-up emails be sent to try and encourage a greater response rate.

Members had some concerns over the use of Teaching Assistants (TAs) to deliver RE, although they understood that TAs did not have responsibility for planning the curriculum.

Members received details of the primary schools data for 2009-2010.

**RESOLVED** – That the findings of the 2010 primary questionnaires be received.

#### **6. Religious Education in English Schools: Non-statutory guidance 2009**

In 2009 “Religious Education in Schools: Non Statutory Guidance” had been published to support the provision of high quality RE in maintained schools in England. The JCB Academy opened in September 2010 and currently offered RE provision in line with the Staffordshire Agreed Syllabus for Religious Education and taught Key Stage 4 students a short course GCSE in Religious Studies.

The new guidance gave clearer advice on academies and stated that:

*“all academies are required, through their funding agreements, to teach RE. For Academies without a religious character, this will be the locally agreed syllabus.”*

and

*“All academies are inspected on the quality of their RE by Ofsted as part of the normal inspections regime.”*

Members felt that a letter of introduction should be sent to the JCB Academy offering support for RE and setting out the appropriate charges. Members also heard that two further secondary schools, John Taylor and De Ferrers, were in the process of becoming academies, though both schools already had good results from their teaching of RE.

**RESOLVED** – That a letter of introduction be sent to the JCB Academy with an offer of appropriate charged support for RE.

## **7. Transforming religious education: the Ofsted thematic report on RE 2006-2009**

In June 2010 “Transforming religious education”, the Ofsted thematic report on RE 2006-09 was published as an evaluation of the strengths and weaknesses of RE in primary and secondary schools. The report had been based on 94 primary and 89 secondary school visits, two of which were Staffordshire schools.

Members received a summary of the reports findings.

**RESOLVED** – That the report be noted.

## **8. Applications for Variation of Practice**

SACRE were reminded that, should written application be received from a head teacher of a county school to disapply the requirement for broadly Christian collective worship and/or make amendments to the way the Agreed Syllabus was followed, SACRE should determine whether the application was appropriate. It was agreed that SACRE should be kept informed of any developments in this area.

There were currently no applications.

**RESOLVED** – That the current position of applications for variation of practise be noted.

## **9. Celebrate RE March 2011: Staffordshire Initiative**

SACRE were informed of the Celebrate RE national initiative, which was a month long celebration of religious education in England and Wales taking place in March 2011. Within Staffordshire an RE conference led by RE today would be held on 2 March. The conference would give an opportunity during the extended lunch break for SACRE members to share examples of their work with delegates.

Schools were being invited to submit work for display at the Kinston Centre during March to highlight the good practise that existed around the County.

**RESOLVED** – That the arrangements for Celebrate RE 2011 in Staffordshire be noted.

#### **10. Interfaith Week November 21-27th**

Interfaith week was taking place on 21-27 November 2010 and SACRE were informed of the opportunities for Staffordshire schools throughout the week, including:

- a) Discover Sikhism, an opportunity to visit the Gurdwara, learn about Sikhism and practise and share in the langar;
- b) Explore Islam, an opportunity to learn about Muslim beliefs and values, follow the route of the pilgrimage and find out about life in a Muslim home;
- c) Arrange talks in schools from representatives of the Baha'i, Christian, Jewish and Buddhist faiths; and,
- d) Arrange visits to places of worship, including a Synagogue and Gurdwara.

**RESOLVED** – That the summary of planned events for Interfaith week in Staffordshire be noted.

#### **11. An Analysis of Examination Results for Staffordshire Schools 2010**

SACRE received an analysis of RE examination results for Staffordshire for information. The detail of this analysis would be considered alongside the A level results at their next meeting.

**RESOLVED** – That :

- a) the report be received and the data be brought to the next meeting of SACRE for detailed consideration; and,
- b) letters of congratulation or support be sent on SACRE's behalf to those schools identified.

#### **12. The SACRE Budget 2010 - 2011**

Members received details of the SACRE budget for the financial year 2010-2011.

Continuing priorities for this financial year included:

- a) professional development for SACRE members;
- b) support for the Student Council for RE;
- c) development of guidance materials to accompany the 2009 Agreed Syllabus;
- d) the SACRE Awards 2010; and,
- e) the SACRE lecture.

**RESOLVED** – That the report be received.

#### **13. Any Other Business**

SACRE were informed of the following items of business:

- a) Liz O'Brien shared details of work she had undertaken to create symbol supportive text that could be used to ensure accessibility for all children. The text was available for download on the Widgit website and members were given details of this site and of further excellent resources;
- b) The new Student Council was due to have its first meeting next week and had approximately 23 members. There was some concern over the funding of this for the future and it may become necessary to consider different ways of working; and,
- c) Frankie Durairatnam informed members of his recent visit to a Newport School.

**14. Date of the next meeting**

**RESOLVED** – That the next meeting of SACRE be Tuesday 15 February 2011, commencing at 2.00 pm, Kingston Centre, Stafford.

**Rev. Preb. M. Metcalf  
Chairman**

---

Documents referred to in these minutes as Schedules are not appended, but will be attached to the signed copy of the Minutes of the meeting. Copies, or specific information contained in them, may be available on request.





**Standing Advisory Council on Religious Education  
15<sup>th</sup> February 2011  
Report of the Director of Children's Services**

**RE and the Holocaust Education Trust's 'Visits to Auschwitz project'**

**1 Purpose of Report**

- 1.1 To present members of SACRE with a brief overview of the Holocaust Education Trust's 'visits to Auschwitz project' and the impact it has had in Staffordshire's schools.

**2 Summary**

- 2.1 The Holocaust Educational Trust was established in 1988. Their aim is to educate young people from every background about the Holocaust and the important lessons to be learned for today. The Trust works in schools, universities and in the community to raise awareness and understanding of the Holocaust, providing teacher training, an outreach programme for schools, teaching aids and resource material.

**3 Recommendation**

- 3.1 That members of SACRE receive the report and note the contents.

**4 Background**

4.1 Through the Lessons from Auschwitz Project, sixth-form students and their teachers take part in two afternoon seminars and a one-day visit to the former Nazi extermination camp of Auschwitz-Birkenau in order to then pass on the lessons in their schools and communities.

4.2 Lizzie Jolley and Katie Dable took part in the project last year and have shared their experience within their school and local community. Today they will share their presentation with SACRE members.

**5 Equal Opportunities**

- 5.1 This report has been prepared in accordance with the County Council's policies on equal opportunities.

**6 Financial implications**

- 6.1 There are no immediate financial implications

**Contact Officer  
Telephone number:**

**Emma Senior  
01785 277997**

## **Transforming Religious Education, Ofsted report 2010**

The Ofsted report, *Transforming Religious Education*, published on June 6th 2010, has criticised the quality of RE provision at both primary and secondary levels.

### **Primary**

The quality of RE in primary schools was broadly the same as reported in 2007 and not enough was of good quality - with only 6 out of 10 schools gaining a satisfactory rating. Although the visited schools took the subject seriously two problems were particularly highlighted. Most importantly, 'the pattern of the curriculum delivery of the subject often limited the opportunities for sustained learning in RE'. This is particularly seen in the reliance on a narrow curriculum model based on RE being delivered in half termly units taught weekly. This often inhibits sustained learning in the subject and opportunities to link it to other areas of the curriculum. Secondly, teachers lacked subject knowledge and confidence to plan and teach high quality RE lessons.

### **Secondary**

A significant decline is reported in the quality of RE since the 2007 survey, with only 40 out of 89 schools receiving good/outstanding ratings and 14 being rated as inadequate. Factors that were particularly highlighted as detracting from the quality of the provision were the 'impact on RE of the recent changes to the wider curriculum, particularly at Key Stage 3, and weaknesses in the quality of learning in much of the provision for the short course GCSE in religious studies'. Another very important issue that was raised is the uncertainty among many teachers of RE 'about what they are trying to achieve in the subject.' It is suggested that this results in a 'lack of well structured and sequenced teaching and learning, substantial weaknesses in the quality of assessment and a limited use of higher order thinking skills to promote greater challenge'.

The report was based principally on evidence from visits to 94 primary and 89 secondary schools in England between 2006 and 2009



Headteachers in Secondary Schools

31<sup>st</sup> January 2011

Dear Headteacher

**Religious Education and the proposed English Baccalaureate**

The Schools White Paper 2010 "The Importance of Teaching" is a major initiative which will affect all Staffordshire schools. In particular, the proposed English Baccalaureate (EBacc) will have a radical impact on the secondary school curriculum, not only in KS4 itself but in the years leading up to KS4. No doubt schools are already beginning to plan for these developments.

One of the success stories in recent years has been the dramatic rise in popularity and take-up of GCSE exam courses in Religious Education/Religious Studies. Students find the courses stimulating, challenging and relevant. Levels of motivation are high, and so are the levels of pupil attainment. For these reasons, the current Staffordshire Agreed Syllabus in RE (launched in 2009) has chosen to base its provision for KS4 entirely on all pupils following an approved external exam course. The relevant extract from the Agreed Syllabus, which has the force of law, is attached to this letter. Whether pupils are entered for the exam itself at the end of the course is at the school's discretion, but their KS4 entitlement in RE is clear and unambiguous.

Staffordshire SACRE can fully appreciate the possible dilemmas faced by headteachers in seeking to respond constructively to the demands which will be placed on their schools by the introduction of the EBacc. SACRE recognises that there may well be a temptation to find time for the required Humanities subjects by cutting the time for RE, and perhaps by diverting experienced teachers with a wealth of expertise in RE into other subject areas. Such a strategy would subvert the provisions of the Agreed Syllabus, would deprive pupils of their legal entitlement, and would marginalise and downgrade Religious Education – at a time when being religiously literate and aware is an essential skill for citizens today and in the future.

May I respectfully ask, on behalf of Staffordshire SACRE, that you bear these points in mind as you engage with the task of planning for the introduction of the EBacc into your school. The County's Senior Adviser in RE, Emma Senior, is always willing to offer advice and support, if contacted.

Please accept our best wishes and continuing good will as we work together with you and your school to provide the highest quality of educational experience for our young people.

Yours sincerely



Rev. Prebendary Michael Metcalf  
Chair Staffordshire SACRE

Encl



**Standing Advisory Council on Religious Education  
15<sup>th</sup> February 2011**

**Report of the Director of Children's Services**

**An Update on Key Issues**

**1 Purpose of Report**

1.1 To present members of SACRE with a brief update on key issues that have developed or arisen since the last meeting of SACRE.

**2 Summary**

2.1 Members of SACRE will receive a brief report on a number of key issues. These are matters which have either been raised at previous SACRE meetings and which have moved forward, or matters on which it is appropriate to brief members of SACRE.

**3 Recommendation**

3.1 That members of SACRE receive the report and note the contents

**4 Background**

4.1 Since the autumn term meeting of the SACRE there have been developments in a number of areas which had previously been agenda items for SACRE or which have local or national importance for RE.

4.2 Members will be briefed on these key developments. A summary is attached to this paper.

**5 Equal Opportunities**

5.1 This report has been prepared in accordance with the County Council's policies on equal opportunities.

**6 Financial implications**

6.1 Financial implications may be raised by individual items. These have been dealt with elsewhere, or will be raised at future meetings of SACRE.

**Contact Officer  
Telephone number:**

**Emma Senior  
01785 277997**

### **Letters of congratulations for schools**

Letters have been sent to schools who achieved examination results which were above the national average for Religious Studies at both GCSE and A level. These have been very well received.

### **Letters to Academies**

Letters have not been sent to Academies. I wanted to be sure that the wording was appropriate so I have asked colleagues in neighbouring authorities to share with us the approach they have taken. Some examples can be brought to the next meeting.

### **The Student Council for Religious Education**

The student council members had a very successful first meeting. They bonded well and have agreed to complete a task within school which will contribute to an RE display in the Kingston Centre sharing student's views on RE. We have decided to change the format of meetings where appropriate and for our next meeting we will be visiting Sikh and Hindu faith buildings in Wolverhampton.

### **Farmington Fellows**

Jan Young from Queens Croft High School, Lichfield, a special school, has agreed to share her work with other special school teachers at a network meeting. Jan's work explored effective strategies for facilitating visits to faith buildings for children with special educational needs.

### **The Best of British Islam**

In November NATRE sent me multiple copies of a 7-DVD set called Best of British Islam which came from the British Foreign and commonwealth office (FCO) for RE teachers (secondary). A condition of the offer was that I show a clip or two and talk about the issues the clips raise, and how the resource might be used in the classroom. An evaluation form was completed by me encompassing the teachers' views and returned to NATRE. The films are superb and the teachers gave some very positive feedback!

### **Resignation of Rummy Bajaj**

With regret we have been informed that Rummy Bajaj has resigned as a member of SACRE. His resignation letter read:

'...Attending the meetings I admired with awe the level of expertise of the committee members and your skilful handling of intricate SACRE matters.

I can assure you that I will be leaving SACRE with the confidence that the Sikh issues at schools are going to be dealt with compassion and fairness under your leadership.

I take this opportunity of wishing you and fellow members that "May God fill your lives with Happiness, Good Health & Spiritual Prosperity.

Kind Regards,

**Rummy Bajaj'**

# Agenda Item 8

## Standing Advisory Council on Religious Education 15<sup>th</sup> February 2011

### Report of the Director of Children's Services

### Report on Interfaith week November 21-27th

#### **1 Purpose of Report**

1.1 To brief members of SACRE on the successful events during Interfaith week November 21-27<sup>th</sup>

#### **2 Summary**

2.1 Staffordshire Education Transformation Division in association with partners will be offering opportunities for Staffordshire schools throughout interfaith week.

#### **3 Recommendation**

3.1 That members of SACRE receive the summary and note its contents.

#### **4 Background**

4.1 Members are offered the opportunity to share a summary of any events they were involved in during interfaith week.

#### **5 Equal Opportunities**

5.1 This report has been prepared in accordance with the County Council's policies on equal opportunities.

#### **6 Financial implications**

6.1 There are no immediate financial implications

**Contact Officer**  
**Telephone number:**

**Emma Senior**  
**01785 277997**





## **Standing Advisory Council on Religious Education 15<sup>th</sup> February 2011**

### **Report of the Director of Children's Services**

#### **Celebrate RE March 2011: Staffordshire initiatives**

#### **1 Purpose of Report**

- 1.1 To brief members of SACRE on the planned events for Celebrate RE March 2011.

#### **2 Summary**

- 2.1 Celebrate RE in March 2011 will be a month long celebration of religious education in England and Wales. It aims to raise the profile of religious education in many ways for example through promoting good practice and strengthening community links.

#### **3 Recommendation**

- 3.1 That members of SACRE are updated on any new developments in this area.

#### **4 Background**

- 4.1 The Staffordshire RE conference will be held on the 3<sup>rd</sup> March 2011. It will be led by RE today. There will be an opportunity during the extended lunch break for members of SACRE to be available to share examples of their work with delegates.
- 4.2 The Kingston Centre will be inviting schools to submit work for display around the centre for the month of March to highlight the good practice that exists around the county.
- 4.3 Two free CPD opportunities for RE teachers during March have been circulated to teachers via the e-update system. These are:

'What's worth fighting for in RE?' – presentation and symposium on the future of RE – 1 March 2011 – Dewsbury Minster

'Treading on Eggshells?' Looks at tackling difficult topics in RE – 18 March 2011 – University of Huddersfield.

#### **5 Equal Opportunities**

- 5.1 This report has been prepared in accordance with the County Council's policies on equal opportunities.

#### **6 Financial implications**

- 6.1 There are no immediate financial implications

**Contact Officer**  
**Telephone number:**

**Emma Senior**  
**01785 277997**



**Report of the Director of Children's Services**

**An Analysis of Examination Results for Staffordshire Schools 2010**

**1 Purpose of Report**

To present SACRE members with a statistical analysis of the standards achieved in GCSE (Full Course and Short Course), Advanced Level and Advanced Subsidiary GCE Religious Studies by pupils examined in the summer of 2010.

**2 Summary**

Members of SACRE will receive a graphical analysis of the standards achieved.

**3 Recommendation**

That members of SACRE receive the report.

That letters be sent on behalf of SACRE to identified schools offering congratulations or support as appropriate.

**4 Background**

A statistical analysis of the standards achieved by Staffordshire schools in examinations held in summer 2010 is attached to this report.

Key issues identified in the analysis are as follows:

Overall

- a) In 2010 a total of 6952 students were entered for GCSE RS, either Full or Short Course.
- b) A developing trend is for schools to offer both Full and Short Course in Key Stage 4. 23 schools now offer both examinations. 44 out of 55 schools offer the short course, 33 schools also offer the short course.
- c) Overall 76 students were entered for AS level and 212 students for A2 at the end of KS5. There is a rise in the number of entries at AS level

Full Course GCSE

- a) The number of schools entering pupils for the Full Course has remained relatively steady since 2004, with four county schools entering over 50% of pupils for this examination.
- b) The percentage of pupils attaining grades A\* to C has risen above the national average for 2010 despite falling below the national average last year. The differential is +1.8 percentage points.
- c) Attracting boys to the course continues to be an issue. The number of girls entered has remained steady however there has been a fall in the number of boys entered this year.

Short Course GCSE

- a) 44 out of 55 Staffordshire secondary schools now enter pupils for the Short Course. The number of entries has risen in 2010.
- b) The number of Staffordshire students gaining the higher grades A\* to C continues to be below the national level for boys and girls, the Staffordshire average being 3.6 percentage points below the national figure.

Advanced Subsidiary (AS) GCE

- a) The number of entries at AS level has increased.
- b) Recruitment of boys to the course remains an issue, with the ratio at approximately 3:1 in both years.

- c) The percentage of pupils gaining higher grades remains below the national average.
- d) Attainment in AS level continues to be an issue.

#### Advanced (A2) GCE

- a) The number of pupils entered for A Level (A2) has fallen slightly in 2010.
- b) Attracting boys to the course remains an issue with the ratio remaining at about 3:1.
- c) At the higher grades Staffordshire pupils continue to attain below the national average.

Teachers and pupils in Staffordshire schools are to be congratulated on their hard work and continued efforts to raise the standard of attainment in the County.

Effective ways to raise standards at all levels are under consideration.

### **5 Equal Opportunities**

This report has been prepared in line with the County Council's policy on Equal Opportunities.

### **6 Financial Implications**

There are no financial implications

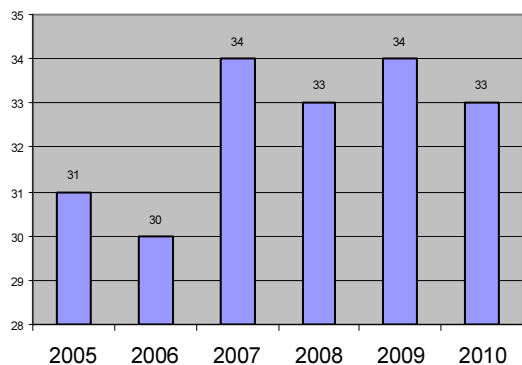
Contact Officer:	Emma Senior
Telephone Number	01785 277997

## Full Course GCSE in Religious Studies Results Analysis 2010

National Average A\* to C 73.1%

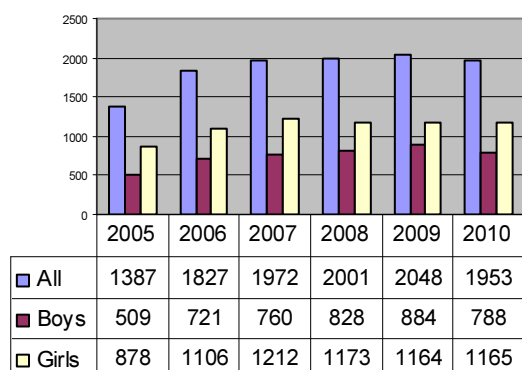
Staffordshire Average A\* to C 74.9%

Number of schools entering pupils for GCSE  
Full Course



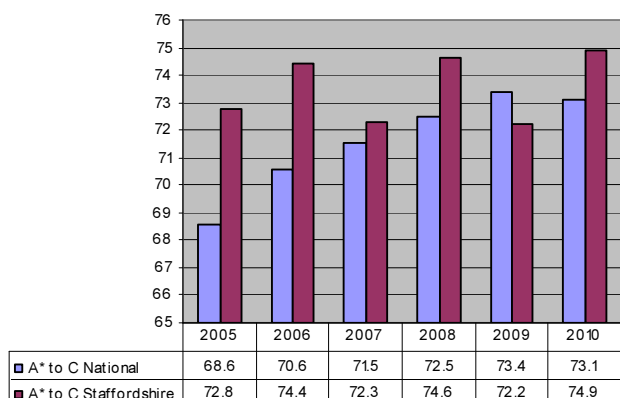
- The number of schools entering pupils for Full Course GCSE fluctuates slightly year on year, and has fallen slightly this year from 34 in 2009 to 33.
- 18 of these schools also enter pupils for Short Course. In some cases this means that all students are offered the opportunity to take an examination appropriate to their commitment and ability. In some only small numbers are catered for, even though both examinations are offered.
- 4 county maintained schools enter more than 50% of students for the full course.

Number of students entered for Full  
Course GCSE



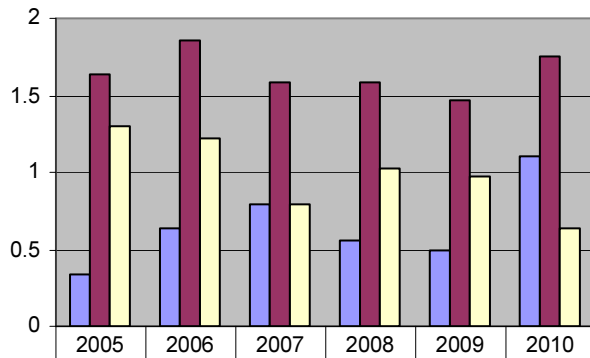
- This year there was a slight fall in the numbers taking the Full Course.
- There was a drop in the number of boys entered in 2010 but the number of girls entered remained steady.
- Some schools are now entering larger groups for the examination, often because they are offering the Full Course option to the more able students who are already following a Short Course. Only 2 schools entered fewer than 10 students, but in 7 schools entries were below 20.

Percentage of students gaining A\* to C grades in  
Full Course



- The percentage of pupils attaining grades A\* to C in Full Course nationally has decreased.
- This year Staffordshire schools have returned to great form bucking the national trend and have performed significantly better than the national average.
- The differential between the national average and the Staffordshire average is 1.8 percentage points.

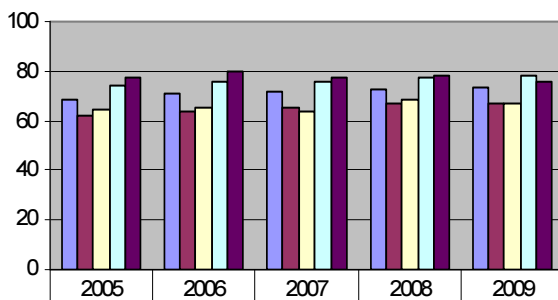
### Student referencing Full Course Comparative Performance



	2005	2006	2007	2008	2009	2010
PR National Difference	0.34	0.64	0.79	0.56	0.49	1.11
PR Staffordshire Difference	1.64	1.86	1.58	1.58	1.47	1.75
Staffs Relative Performance Indicator	1.3	1.22	0.79	1.02	0.98	0.64

- Pupils' grades in all subjects are averaged nationally and compared with the average national achievement for RS. The difference (residual) is calculated. In 2010 the residual for RS nationally is 1.11 points, where 6 points represents a grade.
- The same process is followed for Staffordshire results in all subjects. In 2010 the residual for RS is 1.75.
- This calculation indicates that, in 2010, pupils nationally and on average attain a slightly higher grade in Full Course RS than in the other subjects they take. This trend is matched in Staffordshire.
- Staffordshire pupils' relative performance in RS has been consistently better than the national figure.
- In 2010 Staffordshire pupils' results on average were approximately  $\frac{1}{6}$  of a grade higher than national expectations.

### Attainment by gender Full Course



	2005	2006	2007	2008	2009
A* to C National	68.6	70.6	71.5	72.5	73.4
A* to C Boys National	61.7	63.8	65.4	66.7	67.1
A* to C Boys Staffordshire	64.8	65.6	63.9	68.8	66.9
A* to C Girls National	73.9	75.8	76.2	77.1	78.5
A* to C Girls Staffordshire	77.4	80.2	77.6	78.6	76.2

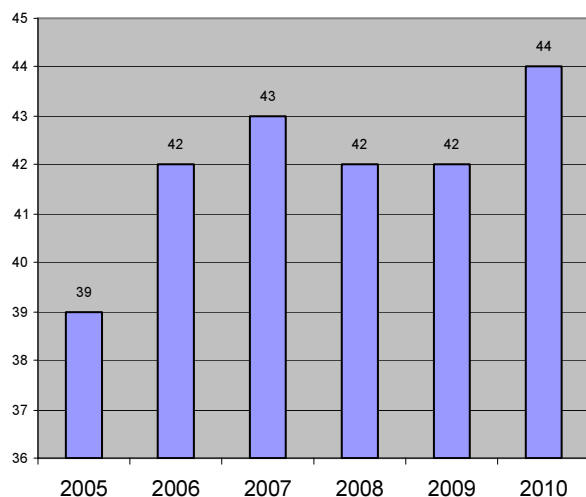
- In 2010, boy's achievement is below the national average for all pupils and slightly below the national average for boys.
- Girls achievement is above the national average for all pupils but slightly below the national average for girls.

## Short Course GCSE in Religious Studies Results Analysis 2010

**National Average A\* to C      54.6%**

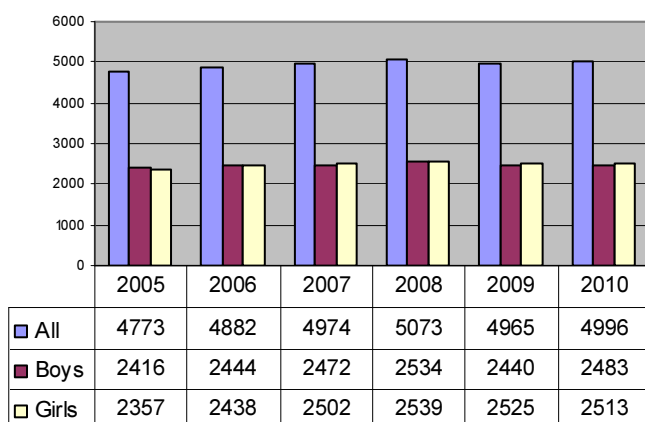
**Staffordshire Average A\* to C    51%**

**Number of schools entering students for Short Course GCSE**



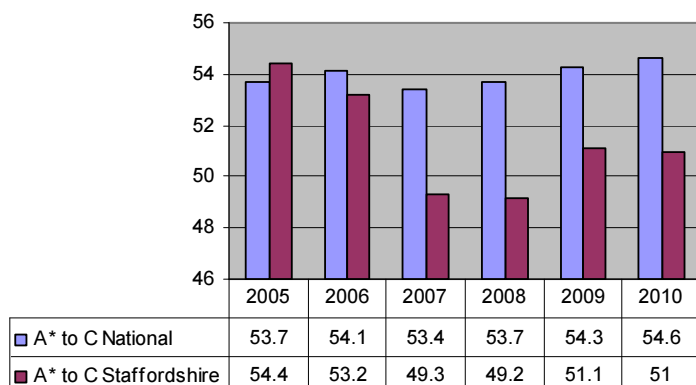
- The number of schools entering students for Short Course RS has remained steady, with only slight variation, since 2005.
- 44 out of Staffordshire's 55 secondary schools entered pupils for the Short Course GCSE in 2009.
- 18 of these schools also enter students for Full Course.

**Number of students entered for Short Course GCSE**



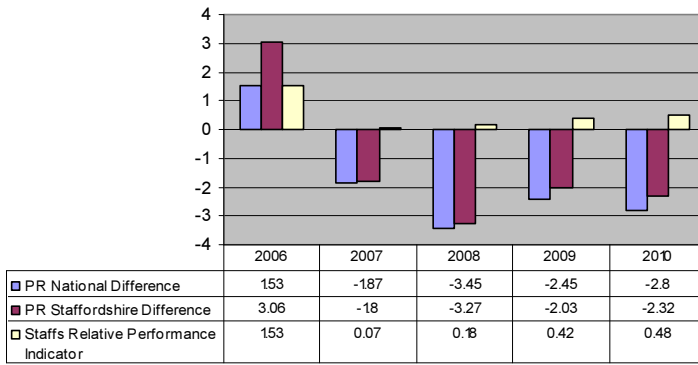
- The number of pupils entered for the Short Course GCSE RS has risen in 2010, although figures have been steady with only slight variation over the last 3 years.
- There is little significant difference between the number of boys entered for the examination and the number of girls.

**Percentage of students gaining A\* to C for Short Course GCSE**



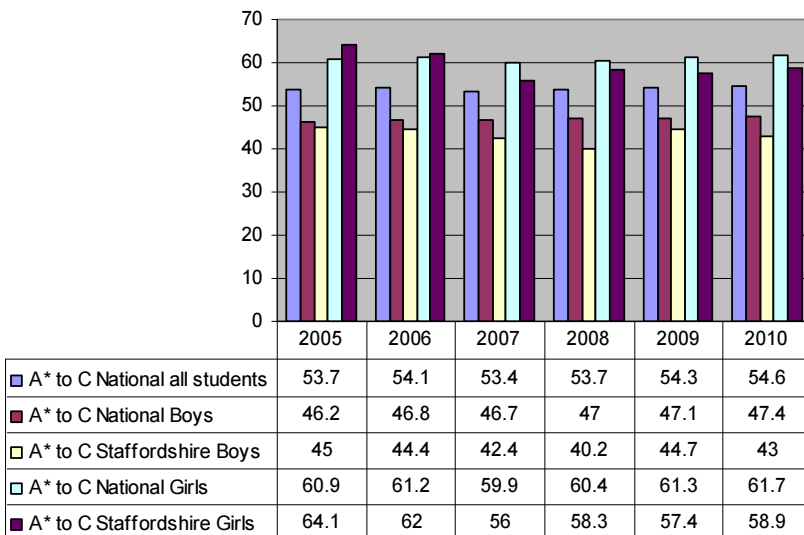
- There has been a slight increase in the national average for 2010 but Staffordshire's average has remained steady.
- The Staffordshire average in 2010 is below the national level by 3.5 percentage points, a slight increase on 2009.
- In general this may be because more schools are entering a higher proportion of more able students for Full Course leaving pupils of a lower average ability to take the Short Course

**Student referencing Short Course GCSE  
Comparative Performance**



- Pupils' grades for all subjects are averaged nationally and compared with the average national achievement for RS. The difference (residual) is calculated. In 2010 the residual for Short Course nationally is -2.8 points.
- This means that, overall, pupils perform slightly lower than the average in short course RS by comparison with the other subjects they take.
- In 2010 the Staffordshire County residual was slightly better than the national at -2.32. This indicates that, on average, Staffordshire students taking Short Course RS attain slightly less than a grade lower than in the other subjects they take.

**Attainment by gender for Short Course GCSE**



- The percentage of girls achieving grades A\* to C is higher than the national average for all pupils but below that for girls in 2010.
- The percentage of boys attaining the higher grades is lower than the national average for all pupils and for Staffordshire boys.



# Advanced Subsidiary (AS) GCE in Religious Studies Results Analysis 2010

National Average A to C

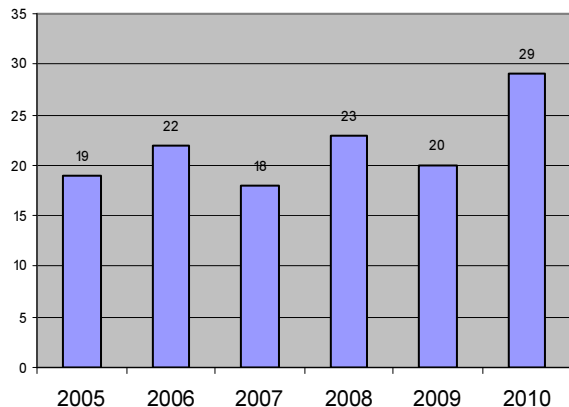
67.6%

Staffordshire Average A to C

46.1%

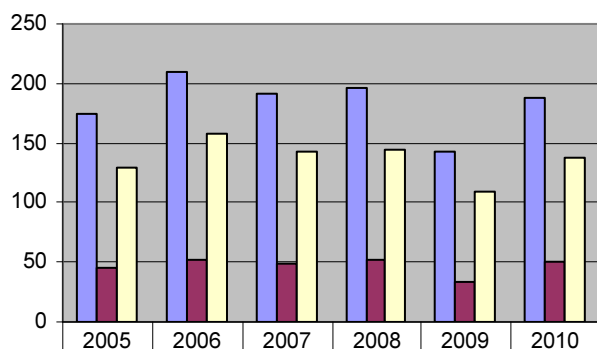
## Year 12

No of schools entering students for AS in Year 12



- The number of schools entering students for AS in Year 12 has increased this year.

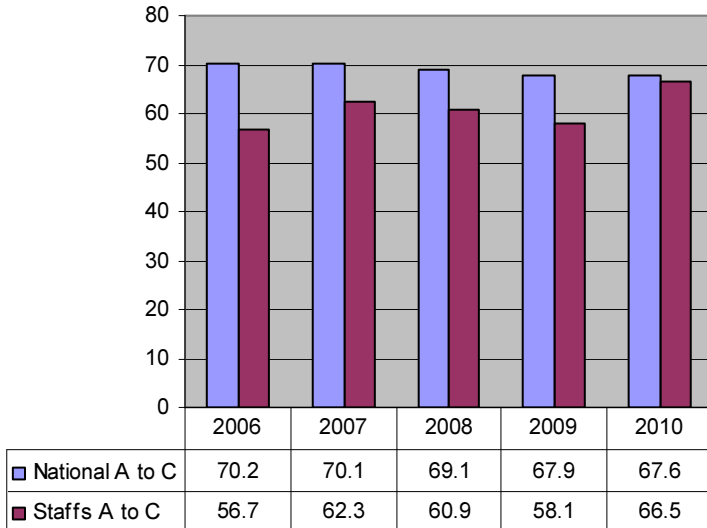
Number of students entered for Advanced Level AS in Year 12



- Following a decrease in entries last year the number of students entered for AS in Year 12 has risen in line with previous years.
- Girls continue to outnumber boys by a ratio of approximately 3:1

	2005	2006	2007	2008	2009	2010
■ Candidates All	174	210	191	197	143	188
■ Candidates Boys	45	52	49	52	34	50
■ Candidates Girls	129	158	142	145	109	138

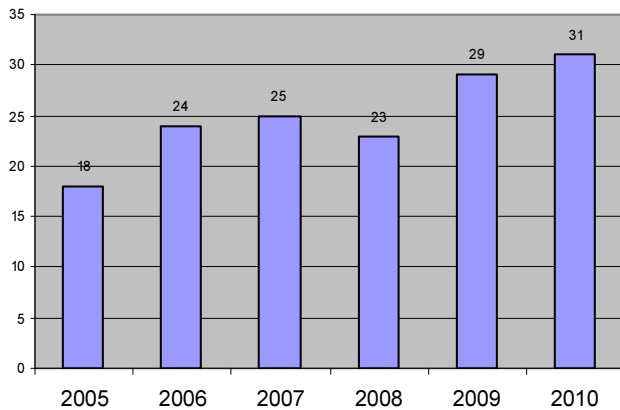
**Percentage of students gaining A to C grades in Year 12**



- This analysis is only available for 2006 to 2010 as in previous years the higher grades were taken to be A and B only
- Results in Staffordshire continue to fall below the national average but the gap has lessened in 2010.

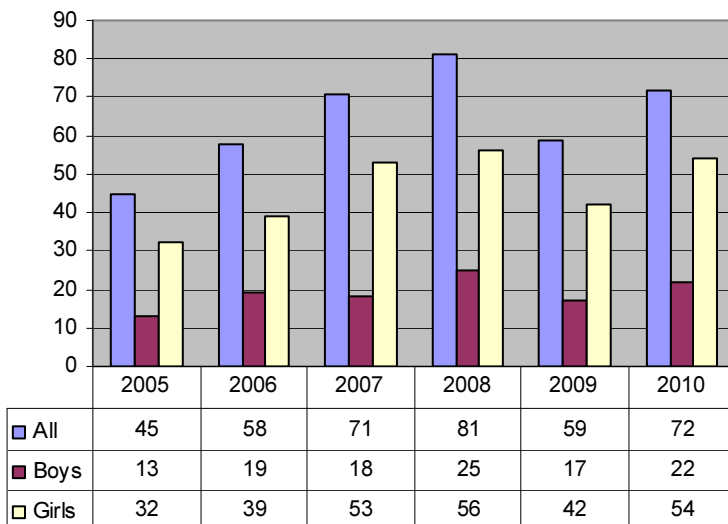
**Year 13**

**Number of schools entering pupils in Year 13 for Advanced Level AS**



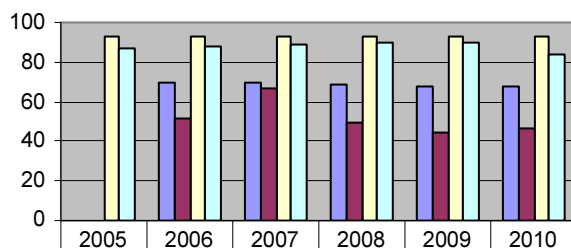
- The number of schools entering students for AS Level in Year 13 has increased in 2010

**Number of students entered in Year 13 for AS Level**



- The number of entries for 2010 has increased following a decrease in 2009.
- The ratio of girls to boys remains approximately 3:1
- The size of the sample makes it difficult to identify significant trends.

**Percentage of students gaining A to C and A to E grades  
in Year 13 AS Level**



	2005	2006	2007	2008	2009	2010
A to C National		70.2	70.1	69.1	67.9	67.6
A to C Staffordshire		51.7	66.7	49.4	44.1	46.1
A to E National	92.6	93.4	93.3	93.3	92.6	92.5
A to E Staffordshire	86.6	87.9	88.7	90.1	89.8	84.2

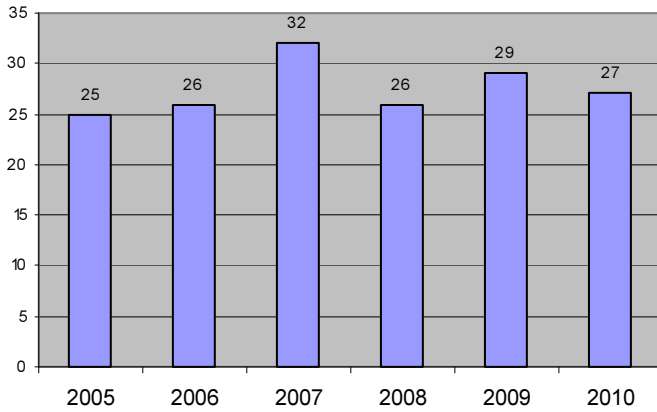
- The analysis at Grades A to C is only available for 2006 to 2008 as in previous years the higher grades were taken to be A and B only
- The percentage of pupils in Staffordshire attaining grades A to C is significantly lower than the percentage nationally.
- The percentage of pupils in Staffordshire attaining grades A to E is lower than the percentage of pupils nationally.
- Achievement at the higher grades remains an issue.

# Advanced Level (A2) GCE in Religious Studies Results Analysis 2010

National Average A to C 78.2 %

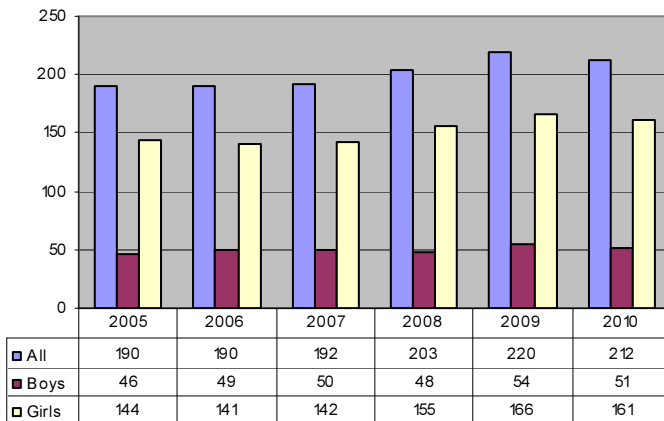
Staffordshire Average A to C 66.1 %

Number of schools entering pupils for Advanced Level A2



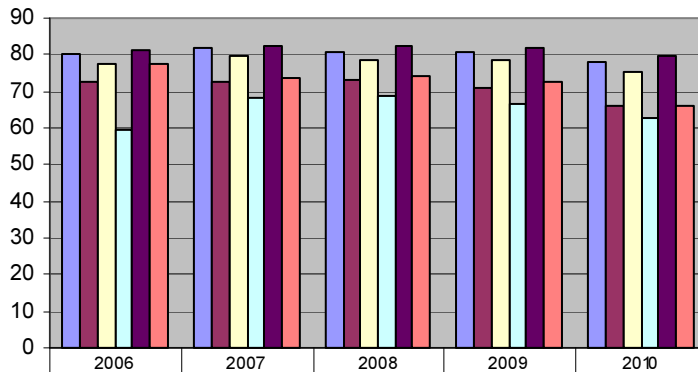
- The number of schools entering students for Advanced Level (A2) RS fluctuates slightly from year to year.
- 27 schools entered students in 2009.

Number of students entered for Advanced Level (A2)



- The number of Staffordshire pupils entered for Advanced Level (A2) decreased slightly in 2010.
- The ratio of girls to boys is approximately 3:1

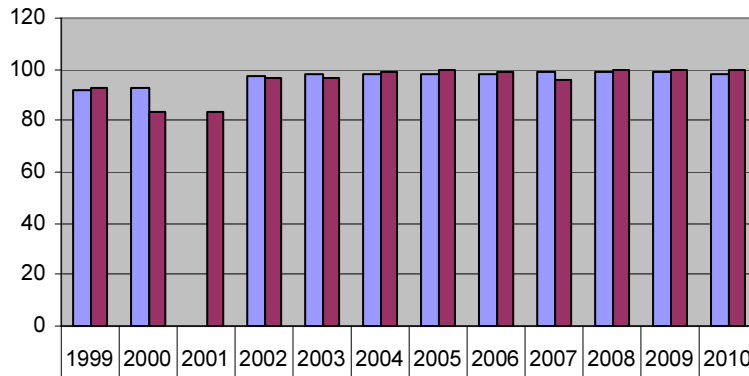
Percentage of students gaining A to C grades at Advanced Level (A2)



- This analysis is only available for 2006 to 2010 as in previous years the higher grades have been taken to be A and B.
- Staffordshire attainment falls below the national average by 12.1 percentage points.
- Both boys and girls fall below the national averages for their gender.
- This remains an issue

■ A to C National	80.2	81.6	80.9	81	78.2
■ A to C Staffordshire	72.6	72.4	72.9	70.9	66.1
■ A to C Boys National	77.6	79.5	78.6	78.8	75.2
■ A to C Boys Staffordshire	59.2	68	68.8	66.7	62.7
■ A to C Girls National	81.4	82.6	82.1	82.6	78.6
■ A to C Girls Staffordshire	77.3	73.9	74.2	72.3	65.8

**Percentage of students gaining A to E grades  
at Advanced Level (A2)**



- For the second time in three years Staffordshire students have achieved 100% A-E grades meaning that every student entered achieved a grade.
- This is above the national average.

■ A to E National	92.2	93		97.6	97.9	98.3	98.4	98.4	98.7	98.6	98.6	98.3
■ A to E Staffordshire	92.7	83	83	96.9	96.3	99.2	99.5	98.9	96	100	99.5	100

## Staffordshire schools performing well

### GCSE Full Course

School	Board	Entries	Well above national Average A* to C (73.1%)	Well above average mean points for county (42.4)	Significantly positive residual (National 0.06)
Alleyne's High School	AQA	111	96.4	46.8	
Cannock Chase High School	OCR	10	80.0		
Codsall Community High School	OCR	31	100	47.7	
Endon High School	OCR	96	83.3		
John Taylor High School	OCR	77	100	50.4	
NCHS The Science College	AQA	34	91.2		
Paulet High School	EDEXCEL	10	100	50.2	
Queen Elizabeth's Mercian High School	OCR	50	88	47.1	6.68
Sir Graham Balfour High School	EDEXCEL	16	81.3		
Sir Thomas Boughey High School	OCR	6	100	51	
Thomas Alleyne's High School	AQA	55	83.6		
Westwood College	OCR	59	84.7	46.2	
Wilnecote High School	OCR	42	83.3		
Wolstanton High School	OCR	38	92.1	47.6	5.22
Woodhouse Business and Enterprise College	OCR	60	90	48	

## Staffordshire schools causing concern

### GCSE Full Course

School	Board	Entries	Well below national Average A* to C (73.1%)	Well below average mean points for county (42.4)	Significantly negative residual (National 0.06)
Chase Terrace Technology College	OCR	44			-5.28
Chesterton Community Sports College	OCR	10	40		
De Ferrers Specialist Tech. College	OCR	37	35.1		
Kingsmead Technology College	OCR	16	37.5		
Nether Stowe School	OCR	74	35.1		-6.69
Maryhill High School	OCR	34	41.2	34.2	-4.91

## Staffordshire schools performing well

### GCSE Short Course

School	Board	Entries	Well above national average A* to C (54.6)	Well above average points for county (18.0)	Significantly positive residual (National -2.80)
Cannock Chase High School	OCR	129	84.2	22.8	3.48
Cheslyn Hay Sports and Community High School	OCR	204	73.0	20.8	
Clayton Hall Business and Language College	OCR	186	60.8	20.5	
Edgecliff	OCR	114	60.5		
Great Wyrley Performing Arts High School	OCR	180	61.1		
Madeley High School	OCR	108	90.7	23.3	3.43
Ounsdale High School	EDEXCEL	17	100	25.1	2.83
The Friary School	EDEXCEL	210	61.9		
Walton High School	OCR	205	73.2	20.8	
Weston Road High School	OCR	155	72.3	22.5	5.23

## Staffordshire schools causing concern

### GCSE Short Course

School	Board	Entries	Well below national average A* to C (54.6)	Well below average points for county (18.0)	Significantly negative residual (County -2.80)
Blake Valley Technology College	AQA	63	14.3	12.8	
Blyth Bridge High School and Sixth Form					-11.20
Clough Hall Technology College	OCR	46	13.0	13.4	-12.83
Hagley Park Sports College	OCR	125	18.4	13.7	-9.11
Leek High Specialist Tech School	OCR	88	17.0	12.3	
Nether Stowe School	OCR	25	8.0	7.8	-10.49
Stafford Sports College	OCR	47	14.9	14.0	-8.56

Woodhouse Business and Enterprise College	OCR	114	20.2	18.0	
---	-----	-----	------	------	--

### Staffordshire schools performing well

#### AS level

School	Entries	Well above national Average A* to C (67.6)
Cannock Chase High a Specialist Science School	1	100
Edgecliffe High School, Kinver	2	100
John Taylor High School	3	100
Thomas Alleyne's High School	1	100
Westwood College	1	100
Queen Elizabeth's Mercian School	4	75

### Staffordshire schools performing well

#### A2 level

School	Entries	Well above national Average A* to C (78.2)
Codsall Community High School	7	85.7
John Taylor High School	15	86.7
King Edward VI School, Lichfield	8	87.5
The Friary School, Lichfield	14	78.5
Thomas Alleyne's High School	9	100
Walton High School	1	100