

**Standing Advisory Council on Religious Education**

Wednesday, 17 November 2010

**2.00 pm**

Kingston Centre, Fairway, Stafford ST16 3TW

John Tradewell  
Director of Law and Democracy  
9 November 2010

---

**A G E N D A**

1. **Election of Chairman and Vice Chairman**
2. **Apologies**
3. **Declaration of Any other Business**
4. **Minutes of the Meeting held on 17 May 2010** (Pages 1 - 4)
5. **An Update on Key Issues** (Pages 5 - 6)  
Report of the Director of Children's Services
6. **NASACRE Update**  
Oral report of the Chairman
7. **Monitoring of Primary School Provision 2009-2010** (Pages 7 - 8)  
Report of the Director of Children's Services
8. **Religious Education in English Schools: Non-statutory guidance 2009** (Pages 9 - 10)  
Report of the Director of Children's Services



9. **Transforming religious education: the Ofsted thematic report on RE 2006-2009** (Pages 11 - 12)  
Report of the Director of Children's Services
10. **Applications for Variation of Practice** (Pages 13 - 14)  
Report of the Director of Children's Services
11. **Celebrate RE March 2011: Staffordshire Initiative** (Pages 15 - 16)  
Report of the Director of Children's Services
12. **Interfaith Week November 21-27th** (Pages 17 - 20)  
Report of the Director of Children's Services
13. **An Analysis of Examination Results for Staffordshire Schools 2010** (Pages 21 - 30)  
Report of the Director of Children's Services
14. **The SACRE Budget 2010 - 2011** (Pages 31 - 34)  
Report of the Director of Children's Services
15. **Any Other Business**
16. **Date of the next meeting**

The next meeting of SACRE is scheduled for Tuesday 15 February 2011, 2.00 pm, Kingston Centre, Stafford.

#### **Membership**

Rummy Bajaj	Sue Blackmore
Christine Chadwick	Mary Gale
G Devadason	Colin Hopkins
Lynn Godden	Rosemary Woodward
Hifsa Haroon-Iqbal	Catherine Brandrick
Rev. Preb. M. Metcalf (Chairman)	Dorothy Kirkham
Karen Knobbs	Dave Lyons
Dr Laow	Peter Davies
	Veronica Downes

Sydney Morris  
Liz O'Brien  
Muhammad Parekh  
Sam Phillips  
Gurmeet Singh  
Bill Walley

Terry Finn  
Ivan Jennings  
Liz Staples  
Tricia Budd  
Frankie Durairatnam



## MINUTES

### Standing Advisory Council on Religious Education Meeting - 17 May 2010

Present: G Devadason, Hifsa Haroon-Iqbal, Sydney Morris, Liz O'Brien, Sam Phillips, Mary Gale, Rosemary Woodward, Dorothy Kirkham, Dave Lyons, Veronica Downes, Ivan Jennings, Frankie Durairatnam and Liz Williams

Apologies for absence: Rummy Bajaj, Christine Chadwick, Lynn Godden, Karen Knobbs, Dr Laow, Bill Walley, Sue Blackmore, Colin Hopkins, Peter Davies, Terry Finn, Liz Staples and Tricia Budd

Also in attendance – Heather Farr and Helen Phillips.

## PART ONE

### 87. Minutes of the Meeting held on 4 March 2010

SACRE were informed that no formal application had been received from the Muslim Community Groups of Burton-on-Trent.

**RESOLVED** – That the minutes of the meeting held on 4 March 2010 be confirmed and signed by the Chairman.

### 88. Update on Key Issues

SACRE received an update on key issues that had developed or arisen since their last meeting. The issues raised included:

- i) the Student Council for Religious Education (The minutes of the Student Council meeting held on 29 April 2010 were circulated to SACRE members);
- ii) funding for the Student Council (Budget funding to support the Student Council had been allocated from the Student Study Support, therefore relieving the SACRE budget);
- iii) recruitment and retention (SACRE were updated on a number of recent changes to RE specialist teaching staff in Staffordshire);
- iv) subject focused inspections;
- v) "Meet the Muslims" informal initiative;
- vi) "Meet the Jains" (this event was scheduled for 13 October 2010 and all SACRE members were welcome to attend);
- vii) Offer of the Student Handbook for Religious Education (a Primary School offer of the "Puddles" collection of books and a Sikh book and DVD package were on offer to Staffordshire Secondary Schools. Members were shown slides which gave a taste of the teaching opportunities these two offers would have for Staffordshire RE teachers);
- viii) Primary/secondary monitoring (members were disappointed that there were four secondary schools who had still not responded to the questionnaire);

- ix) the Senior Adviser for RE (this would be a twelve month appointment, and interviews were due to take place on 26 May); and,
- x) approach by Muslims in Burton on Trent.

**RESOLVED** – That the report be noted.

#### **89. NASACRE Update**

The Chairman gave an oral update on recent NASACRE developments, including:

- a) the interfaith network UK and NASACRE joint seminar. A booklet had been produced highlighting the key points and copies of this had been circulated to SACREs. This document was also available on the web;
- b) NASACRE was helping to organise a celebrating RE month in March 2011;
- c) the NASACRE AGM had been held and Clare Short had been an interesting and inspirational speaker;
- d) consideration was being given to the future structure of SACRE and their way of working with SACREs; and,
- e) a training programme was now available in DVD form for new SACRE members.

**RESOLVED** – That the oral report be noted.

#### **90. Kenya Visit Feedback**

SACRE received a presentation from Mrs Rosemary Woodward on her involvement with Inter-Christian Fellowships Evangelical Mission (IcFEM) and her recent visit to Kenya. The Mission promoted friendship and understanding between schools and celebrated diversity whilst recognising similarities. Those groups of school who were involved in the Mission found it a very enriching experience.

SACRE members thanked Rosemary for her presentation and the insight into such a positive and beneficial programme.

**RESOLVED** – That the presentation be noted.

#### **91. Support Materials for the Staffordshire Syllabus**

Following the introduction of the Agreed Syllabus in 2009 it had been proposed that relevant support materials should be made available on the Local Authority RE web site and SACRE were shown examples of this.

Schools had to evidence how they were taking account of the new syllabus from September 2009 and to support schools in this task examples of long and medium term planning were available on the website.

SACRE congratulated the Senior Advisor on what would be an invaluable tool for teacher in their planning of RE.

**RESOLVED** – That the range and availability of support materials for schools on the RE web site be noted.

## **92. Application for Variation of Practice**

In order to raise standards and ensure quality of provision at Key Stage 4 the 2009 Agreed Syllabus stated that schools wishing to base their RE provision on an examination specification which was not designated as Religious Studies must take advice from the SACRE. A pro-forma was available on the LA RE website to support schools in any such application for variation.

During the academic year 2008/09 members had been advised of concerns regarding the provision of RE at Clough Hall Technology School, Kidsgrove. The new protocol had been followed with three letters from SACRE being sent to the School requesting information. An application to request variation had now been received and members were invited to consider this application.

Members felt that progress had been made and understood the genuine staffing problems currently experienced by the school.

**RESOLVED** – That a) the application for variation of practice be supported; and, b) the practice be reviewed in two years.

## **93. The SACRE Awards 2010 and the SACRE Lecture 2010**

Members were informed that the SACRE awards 2009/10 were scheduled for Wednesday 30 June at the Seabridge Centre. Awards would be given in four categories: pupils, teachers, schools/departments and members of the wider County. This year the awards would be an opportunity for the Senior Adviser for RE to recognise those who had been particularly supportive over her twenty year period of office.

The SACRE Lecture was scheduled for Tuesday 21 September 2010 at the Kingston Centre, Stafford. The Lecture would be given by Laurie Rosenberg, Jewish Educational Consultant.

**RESOLVED** – That the report be noted.

## **94. SACRE Development Plan 2009-2010**

At its meeting of June 2007 SACRE had agreed to merge the existing Staffordshire action plan with the Ofsted self-evaluation documentation to create a single document addressing the key issues, and that progress against this evaluation be reviewed at SACRE's summer term meeting of each academic year.

SACRE received a copy of the current development plan which highlighted changes to practice and achievements over the year. Members noted the changes and progress made and considered the targets for the forthcoming academic year. Key areas for action in 2010/11 were identified as:

- i) supporting the further development of web-based guidance materials to accompany the 2009 syllabus;
- ii) making greater use of the County's monitoring and progress check initiative to gather information;

- iii) closer monitoring of recruitment in the Authority;
- iv) commissioning work from the Student Council; and,
- v) members' own professional development.

SACRE members were asked to forward any comments on their SACRE Development Plan to the Senior Adviser for RE.

**RESOLVED** – That any comments on the Development Plan be forwarded to the Senior Adviser for RE.

#### **95. The SACRE Budget 2009-2010**

Members received details of the SACRE budget for the financial year 2009/10.

**RESOLVED** – That the budget report be received.

#### **96. Any Other Business**

SACRE were informed of the following items of business:

- a) a consultation process had been undertaken on denominational transport by the County Council. Copies of the consultation were available for members if they wished to take part in this process;
- b) Hifsa Haroon-Iqbal informed SACRE of a new Citizens Panel being established by the Police Authority which intended to act as a consultation body for different faith community groups. Details of the Panel were available from Hifsa for any SACRE member who may be interested in becoming involved;

This would be Heather Farr's last SACRE meeting and she thanked all the members for their support and friendship over the many years she had been involved with SACRE.

Members of SACRE wished to record their appreciation and thanks to Heather for all her enthusiasm, dedication and support of SACRE.

#### **97. Date of next meeting**

**RESOLVED** – That the next SACRE meeting be Wednesday 17 November 2010, 2.00 pm, Kingston Centre, Stafford.

**Rev. Preb. M. Metcalf  
Chairman**

---

Documents referred to in these minutes as Schedules are not appended, but will be attached to the signed copy of the Minutes of the meeting. Copies, or specific information contained in them, may be available on request.



**Standing Advisory Council on Religious Education  
17<sup>th</sup> November 2010  
Report of the Director of Children's Services  
An Update on Key Issues**

## **1 Purpose of Report**

- 1.1 To present members of SACRE with a brief update on key issues that have developed or arisen since the last meeting of SACRE.

## **2 Summary**

- 2.1 Members of SACRE will receive a brief report on a number of key issues. These are matters which have either been raised at previous SACRE meetings and which have moved forward, or matters on which it is appropriate to brief members of SACRE.

## **3 Recommendation**

- 3.1 That members of SACRE receive the report and note the contents

## **4 Background**

- 4.1 Since the spring term meeting of the SACRE there have been developments in a number of areas which had previously been agenda items for SACRE or which have local or national importance for RE.
- 4.2 Members will be briefed on these key developments. A summary is attached to this paper.

## **5 Equal Opportunities**

- 5.1 This report has been prepared in accordance with the County Council's policies on equal opportunities.

## **6 Financial implications**

- 6.1 Financial implications may be raised by individual items. These have been dealt with elsewhere, or will be raised at future meetings of SACRE.

**Contact Officer**  
**Telephone number:**

**Emma Senior**  
**01785 277997**

## **The Student Council for Religious Education**

### **Recruitment and retention**

The following jobs have been advertised since the last meeting:  
Main Professional Scale: Teacher for RE, Queen Elizabeth's Mercian School  
Main Professional Scale: Teacher for RE, Alleyne's High school  
Subject leader: Madeley High School,

### **Subject Focused inspections**

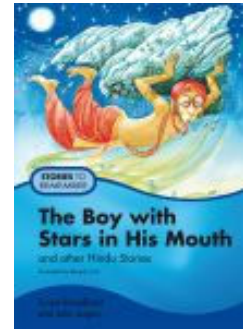
The Report from the subject focused inspection of Cheslyn Hay Sport and Community High School led by Jacqueline Wordsworth is now published. The subject was judged to be good. Members may wish to send a letter of congratulation to the department. In October a further two subject focused inspections took place. The first took place at Belgrave High School in Tamworth and the second was at Crackley Bank Primary school in Newcastle. Both inspections were carried out by Jacqueline Wordsworth.

### **Farmington Fellows**

The Staffordshire tradition of promoting Farmington fellowships continues with Bev Young from Thomas Alleyne's High School in Uttoxeter working on a project in 2010-2011.

### **Offers: SHAP Calendar and storybooks**

Teachers continue to be offered quality resources at reduced rates through bulk buying by the County. As has been the custom in recent years, the SHAP calendar has been offered to schools at a small discount, and for the second half of the autumn term a pack of five storybooks is to be offered to primary schools. The pack includes stories from the Christian, Hindu and Sikh traditions as well as two books which explore difference within faiths through the eyes of children brought up in the tradition. These offers are always well received.



### **Approach by Muslims in Burton on Trent**

HF has had contact on a number of occasions with Shahid Hussain, a member of the community (07971 338305) who has asked about nominating Idris Mears to be a member of the Staffordshire SACRE

HF has explained that this should be possible, but that an approach will have to be made to the SACRE via the clerk, and the decision has to be taken by the members on behalf of the LA.

Mr. Hussain is aware that the letter of proposal needs to be received by the clerk before any further action can be taken. In a telephone conversation held on 03.06.10 between HF and SH it was agreed that SH would try to do this before the November meeting.

It appears that Mr. Mears is often out of the country so might have difficulty in attending all of the meetings.

**Standing Advisory Council on Religious Education  
17<sup>th</sup> November 2010  
Report of the Director of Children's Services  
Monitoring of Primary School Provision 2009-2010**

## **1 Purpose of Report**

- 1.1 To present members with an analysis of findings from the monitoring questionnaires for primary schools 2010.
- 1.2 To invite members of SACRE to make comments and/or recommendations in the light of the findings.

## **2 Summary**

- 2.1 In order to provide members with sufficient information to carry out their monitoring duties, schools have, for a number of years, been issued with questionnaires requesting detail about provision. In order to allow schools to engage fully with the review of the Staffordshire Agreed Syllabus, monitoring questionnaires were not issued in the academic year 2008-2009.
- 2.2 Collated findings from questionnaires issued to primary schools in the summer term 2010 are attached to this paper. Recommendations are identified.

## **3 Recommendation**

- 3.1 That members of SACRE receive the findings from the 2010 primary questionnaires and consider the recommendations.

## **4 Background**

- 4.1 With a break to allow for consultation on the 2009 Agreed Syllabus, monitoring questionnaires have been circulated to secondary and middle schools for a number of years. From September 2005 these questionnaires have formed the main source of information about the provision for RE in Staffordshire schools.
- 4.2 With a similar break, questionnaires have also been issued to primary schools on a three-year rolling programme since 2006, with approximately 100 schools being contacted for information each year. This activity was suspended for 2008-2009 to allow schools to take part in the agreed syllabus consultation.
- 4.3 Information gathered through the monitoring exercise relating to RE in primary schools, including recommendations is attached below.

## **5 Equal Opportunities**

- 5.1 This report has been prepared in accordance with the County Council's policies on equal opportunities.

## **6 Financial implications**

- 6.1 Financial implications will be considered in the light of Member's recommendations.

**Contact Officer**  
**Telephone number:**

**Emma Senior**  
**01785 277997**

# Religious Education in Staffordshire

## Monitoring Primary Provision 2009-2010

### Collated responses

#### Context

Questionnaires were issued to approximately 100 Staffordshire primary schools in the summer term 2010

#### Returns

34 schools returned the questionnaires. This is a reasonable return in view of the fact that these were issued at a very busy time of the year.

#### Subject leader

All schools named a subject leader for RE. In a few instances this was identified to be the headteacher.

#### Time

At Key stage 1 the majority of schools offered between 45 and 60 minutes a week. This meets with the recommendations of the SACRE. 5 schools offered less than this, with one providing as little as 20 minutes on average, but one school gave between 60 and 75 minutes a week. At key stage 2 again the majority of schools provided entitlement RE in 45 to 60 minutes a week. Only one school stated that between 30 and 45 minutes was available. One school did combine the time for RE and collective worship in their return, and this was still below recommendations.

#### Use of Teaching Assistants (TAs)

Schools were asked about their use of Teaching Assistants to deliver RE. When the initiative to allow TAs to take classes was first introduced concerns were expressed by the SACRE that some schools might delegate all RE lessons to TAs and a letter of guidance was sent to all primary schools. This fear has proved unfounded:

- 15 schools indicated that TAs were not used in RE at all
- 1 school said that TAs work alongside the teacher, and three that TAs sometimes deliver RE
- 1 school made use of a TA to deliver RE in to one year group, one school said that a TA was deployed in key stage 1 and one school said that the use of TAs was significant
- 1 school identified that a HLTA delivered RE in teachers' planning, preparation and assessment time (PPA)

This indicates that the extensive use of TAs which might have been anticipated has not taken place.

#### Planning

29 schools indicated that their planning was based on Staffordshire guidance. 2 schools identified other sources that made a significant contribution to their planning.

#### Professional development

17 schools said that their subject leader regularly attended the network meetings offered as part of the County Programme. 3 said a member of staff had attended the conference in 2010, 2 had sent TAs to a session tailored to their needs, 2 had supported teachers to attend 'Creative RE' and 1 subject leader had attended a full day of professional developing on managing RE in the primary school.

#### Comments

1 school found the training offered through the network meetings invaluable, 1 found the on-line resources helpful, 1 felt that cluster meetings would be helpful. 1 school identified that it needed to begin planning to use the 2009 syllabus while another said their planning was linked to county guidance. In one school responsibility for the subject was under review and in another the use of TAs was seen to make it difficult to monitor standards.

No major issues affecting a number of schools were identified.

#### Recommendations

No major issues have emerged from the questionnaires.

Opportunities should be found to remind schools of the recommended time allocation at both key stages, although this is only an issue in a minority of schools.

Some schools may also need to be reminded that time set aside for collective worship cannot be counted as religious education.

**Standing Advisory Council on Religious Education  
17 November 2010  
Report of the Director of Children's Services  
Religious Education in English Schools: Non-statutory guidance 2009**

## **1 Purpose of Report**

- 1.1 To present members of SACRE with a brief update on Religious Education in Schools: Non Statutory Guidance 2009.

## **2 Summary**

- 2.1 In 2009 Religious Education in Schools: Non Statutory Guidance was published to support the provision of high quality religious education (RE) in maintained schools in England. With the opening of Staffordshire's first Academies this is an opportunity to look more closely at the guidance in relation to Academies.

## **3 Recommendation**

- 3.1 That members of SACRE consider the possibility of sending a letter of introduction with an offer of appropriate (charged) support for RE the JCB Academy, Rocester.

## **4 Background**

- 4.1 The JCB Academy opened its doors to students in September 2010. It currently offers RE provision in line with the Staffordshire Agreed Syllabus for Religious Education and teaches KS4 students a short course GCSE in Religious Studies.

- 4.2 The new guidance gives clearer advice on academies than previously. It states that:  
All academies are required, through their funding agreements, to teach RE.  
For Academies without a religious character, this will be the locally agreed syllabus

and:

All academies are inspected on the quality of their RE by Ofsted as part of the normal inspections regime.

Members of SACRE may wish to consider whether to send a letter of introduction to the JCB Academy in Rocester offering appropriate (charged) support for religious education

## **5 Equal Opportunities**

- 5.1 This report has been prepared in accordance with the County Council's policies on equal opportunities.

## **6 Financial implications**

- 6.1 There are no immediate financial implications

**Contact Officer**  
**Telephone number:**

**Emma Senior**  
**01785 277997**



**Standing Advisory Council on Religious Education  
17 November 2010  
Report of the Director of Children's Services  
Transforming religious education: the Ofsted thematic report on RE 2006-2009**

**1 Purpose of Report**

1.1 To present members of SACRE with a brief overview on Transforming religious education: the Ofsted thematic report on RE 2006-2009.

**2 Summary**

2.1 In June 2010 'Transforming religious education': the Ofsted thematic report on RE 2006-2009 was published as an evaluation of the strengths and weaknesses of RE in Primary and Secondary Schools.

**3 Recommendation**

3.1 That members of SACRE receive the report and note the contents.

**4 Background**

4.1 This report is based principally on evidence from visits to 94 primary and 89 secondary schools, 2 of those visited were Staffordshire schools.

4.2 Members will be briefed on this report. A summary is attached to this paper.

**5 Equal Opportunities**

5.1 This report has been prepared in accordance with the County Council's policies on equal opportunities.

**6 Financial implications**

6.1 There are no immediate financial implications

**Contact Officer**  
**Telephone number:**

**Emma Senior**  
**01785 277997**

## **Transforming Religious Education, Ofsted report 2010**

The Ofsted report, *Transforming Religious Education*, published on June 6th 2010, has criticised the quality of RE provision at both primary and secondary levels.

### **Primary**

The quality of RE in primary schools was broadly the same as reported in 2007 and not enough was of good quality - with only 6 out of 10 schools gaining a satisfactory rating. Although the visited schools took the subject seriously two problems were particularly highlighted. Most importantly, 'the pattern of the curriculum delivery of the subject often limited the opportunities for sustained learning in RE'. This is particularly seen in the reliance on a narrow curriculum model based on RE being delivered in half termly units taught weekly. This often inhibits sustained learning in the subject and opportunities to link it to other areas of the curriculum. Secondly, teachers lacked subject knowledge and confidence to plan and teach high quality RE lessons.

### **Secondary**

A significant decline is reported in the quality of RE since the 2007 survey, with only 40 out of 89 schools receiving good/outstanding ratings and 14 being rated as inadequate. Factors that were particularly highlighted as detracting from the quality of the provision were the 'impact on RE of the recent changes to the wider curriculum, particularly at Key Stage 3, and weaknesses in the quality of learning in much of the provision for the short course GCSE in religious studies'. Another very important issue that was raised is the uncertainty among many teachers of RE 'about what they are trying to achieve in the subject.' It is suggested that this results in a 'lack of well structured and sequenced teaching and learning, substantial weaknesses in the quality of assessment and a limited use of higher order thinking skills to promote greater challenge'.

The report was based principally on evidence from visits to 94 primary and 89 secondary schools in England between 2006 and 2009



**Standing Advisory Council on Religious Education  
17 November 2010  
Report of the Director of Children's Services  
Applications for variation of practice**

**1 Purpose of Report**

- 1.1 To consider any applications for variation of practice to religious education and or collective worship.

**2 Summary**

- 2.1 Upon receipt of a written application from a Headteacher of a county school SACRE should determine whether it is appropriate to disapply the requirement for broadly Christian collective worship and/or make amendments to the way the Agreed Syllabus is followed in the case of that school.

**3 Recommendation**

- 3.1 That members of SACRE are updated on any new developments in this area.

**4 Background**

- 4.1 No applications have been received at this time.

**5 Equal Opportunities**

- 5.1 This report has been prepared in accordance with the County Council's policies on equal opportunities.

**6 Financial implications**

- 6.1 There are no immediate financial implications

**Contact Officer  
Telephone number:**

**Emma Senior  
01785 277997**



**Standing Advisory Council on Religious Education  
17 November 2010  
Report of the Director of Children's Services  
Celebrate RE March 2011: Staffordshire initiatives**

**1 Purpose of Report**

- 1.1 To brief members of SACRE on the planned events for Celebrate RE March 2011.

**2 Summary**

- 2.1 Celebrate RE in March 2011 will be a month long celebration of religious education in England and Wales. It aims to raise the profile of religious education in many ways for example through promoting good practice and strengthening community links.

**3 Recommendation**

- 3.1 That members of SACRE are updated on any new developments in this area.

**4 Background**

- 4.1 The Staffordshire RE conference will be held on the 3<sup>rd</sup> March 2011. It will be led by RE today. There will be an opportunity during the extended lunch break for members of SACRE to be available to share examples of their work with delegates.
- 4.2 The Kingston Centre will be inviting schools to submit work for display around the centre for the month of March to highlight the good practice that exists around the county.

**5 Equal Opportunities**

- 5.1 This report has been prepared in accordance with the County Council's policies on equal opportunities.

**6 Financial implications**

- 6.1 There are no immediate financial implications

**Contact Officer  
Telephone number:**

**Emma Senior  
01785 277997**



**Standing Advisory Council on Religious Education  
17 November 2010  
Report of the Director of Children's Services  
Interfaith week November 21-27th**

## **1 Purpose of Report**

1.1 To brief members of SACRE on the planned events for Interfaith week November 21-27<sup>th</sup>

## **2 Summary**

2.1 Staffordshire Education Transformation Division in association with partners will be offering opportunities for Staffordshire schools throughout interfaith week.

## **3 Recommendation**

3.1 That members of SACRE receive the summary and note its contents.

## **4 Background**

4.1 Members will be briefed on all events which are taking place. A summary is attached to this paper.

## **5 Equal Opportunities**

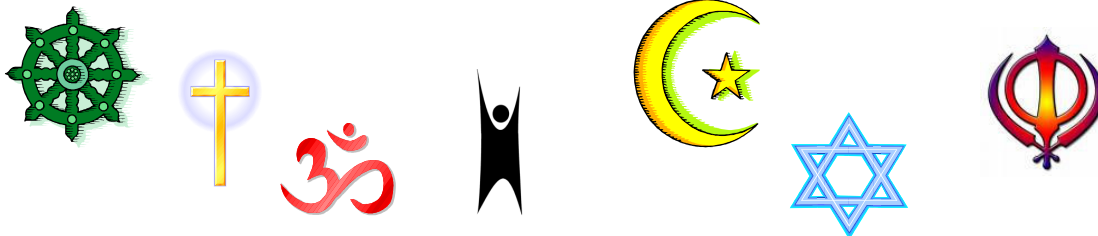
5.1 This report has been prepared in accordance with the County Council's policies on equal opportunities.

## **6 Financial implications**

6.1 There are no immediate financial implications

**Contact Officer**  
**Telephone number:**

**Emma Senior**  
**01785 277997**



Inter faith week 21<sup>st</sup> – 27<sup>th</sup> November 2010

How can my school get involved?

This year we are pleased to offer a range of exciting opportunities for Staffordshire schools. Schools can invite a person of faith to come and speak to students in school, take their pupils to visit a faith building or visit the 'Explore Islam' exhibition.

### People of faith:

The following people have offered to visit Staffordshire schools during this year's Inter faith week to contribute to lessons and/or lead assemblies:

**Baha'i-** Frankie Durairatnam: Contact Frankie by e-mail on [frankietdr@hotmail.com](mailto:frankietdr@hotmail.com)

**Christianity-** Rev. Preb. Michael Metcalf Contact Michael by e-mail on [prebmetcalf@hotmail.com](mailto:prebmetcalf@hotmail.com)

**Judaism-** Paul Lewis: Contact Paul on 01782 214352

**Christian-** Sam Phillips: (Tuesday – Friday) Contact Sam on 01785 242631  
Email [sam@msyn.org.uk](mailto:sam@msyn.org.uk)

**Buddhist-** Dr Laow Panyasir: Contact D. Laow on 01543 472315 or [ajahn@watthaiuk.com](mailto:ajahn@watthaiuk.com)

### Places of faith:

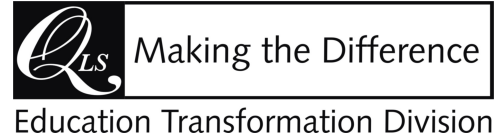
Paul Lewis will be opening the Stoke on Trent **Synagogue** for pre-arranged visits during Inter faith week. Contact Paul on 01782 214352

Stafford's Sikh **Gurdwara** on Tithe Barn Road will be opening its doors to schools on the 23<sup>rd</sup> and 25<sup>th</sup> of November. If you would like to arrange a visit please see the attached flyer.

**Explore Islam** will be taking place at Staffordshire University during Inter faith week. If you would like to arrange a visit please see the attached flyer.

For further information on these and many more available opportunities see the '**visiting speakers**' and '**places to visit**' sections of the Staffordshire RE website:

<http://education.staffordshire.gov.uk/Curriculum/Subjectareas/ReligiousEducation/>



**Staffordshire University, Stafford Muslim Community Centre and  
Staffordshire Education Transformation Division**

Invite Staffordshire schools  
to

# Explore Islam

**Staffordshire police buildings, Cannock road, Stafford ST17 0QG  
22<sup>nd</sup>, 23<sup>rd</sup>, 24<sup>th</sup>, 25<sup>th</sup> and 26<sup>th</sup> November 2010**

Members of Stafford Muslim Community Centre will lead this opportunity to explore Islam  
and to answer any questions.

- Learn about Muslim beliefs and values**
- Follow the route of the pilgrimage**
- Find out about life in a Muslim home**

The exhibition is especially suitable for pupils in Key Stages 2 and 3  
With notice, special arrangements can be made for students in Key Stage 4 and Post-16

**Allow approximately 90 minutes per visit**

Places are limited. Please use the slip below to book  
Time slots will be allocated on a first come, first served basis

✂ .....

I would like to book a time slot for the 'Explore Islam' exhibition at Staffordshire police buildings, November 2010

Name: .....

School: .....DCSF no: .....

Contact no: .....

Preferred date: 

22 <sup>nd</sup> Nov	
----------------------	--

23 <sup>rd</sup> Nov	
----------------------	--

24 <sup>th</sup> Nov	
----------------------	--

25 <sup>th</sup> Nov	
----------------------	--

26 <sup>th</sup> Nov	
----------------------	--

Preferred time: 

10.00	
-------	--

1.15	
------	--

Number of pupils/students: ..... Year Groups: .....

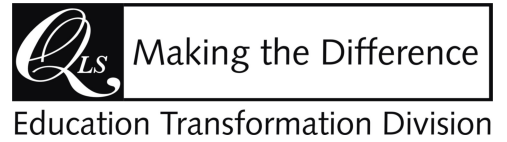
Signed: .....

Schools will be contacted following the closing date whether or not their application has been successful.

Please return by fax (01785 256193), email ([emma.senior@staffordshire.gov.uk](mailto:emma.senior@staffordshire.gov.uk)) or post to:  
**Emma Senior, The Kingston Centre, Fairway, Stafford ST16 3TW**  
**by Friday 5<sup>th</sup> November 2010**



**Stafford's Nanaksar Gurdwara and  
Staffordshire Education  
Transformation Division**



Invite Staffordshire schools  
to

# Discover Sikhism

Nanaksar Gurdwara, 90 Tithe Barn Road, Stafford, ST16 3PQ

**23<sup>rd</sup> and 25<sup>th</sup> November 2010**

Members of Sikh Gurdwara will lead this opportunity to discover Sikhism  
and to answer any questions.

**Take a tour around the Gurdwara  
Learn about Sikh belief and practice  
Share in the langar**

The exhibition is especially suitable for pupils in Key Stages 1, 2 and 3  
With notice, special arrangements can be made for students in Key Stage 4 and Post-16

**Points to note:** In keeping with Sikh practice, all visitors will be offered a drink and food (usually a biscuit). Appropriate permissions will need to be arranged. Girls and boys will need to cover their heads. Head coverings will be available for all at the Gurdwara. If visitors prefer to bring their own, then a scarf is appropriate. Shoes must be removed just inside the main door. Adults should dress respectfully. Sikh women would cover their arms and legs, but modest clothing (trousers or a long skirt) is appropriate for visiting women. There is no problem if children's arms and legs are not covered however this could be a good learning point to discuss. It is likely that visitors will need to sit on the floor, so loose, comfortable clothing is helpful. The Gurdwara can accommodate 60 people. A donation to the Gurdwara is not required. However if schools wish to make a contribution, it is suggested that 50p per pupil up to a maximum of £25 would be acceptable.

**Allow approximately 60 minutes per visit**

Places are limited. Please use the slip below to book  
Time slots will be allocated on a first come, first served basis

✂.....

I would like to book a time slot for '**Discover Sikhism**' at the Nanaksar Gurdwara, Tithe Barn Road, Stafford, November 2010

Name:.....

School:.....DCSF no:.....

Contact no:.....

Preferred date:

23 <sup>rd</sup> Nov	
----------------------	--

25 <sup>th</sup> Nov	
----------------------	--

Preferred time:

10.00		1.15	
-------	--	------	--

Number of pupils/students: ..... Year Groups:.....

Signed: .....

Schools will be contacted following the closing date whether or not their application has been successful.

Please return by fax (01785 256193), email ([emma.senior@staffordshire.gov.uk](mailto:emma.senior@staffordshire.gov.uk)) or post to:

**Emma Senior, The Kingston Centre, Fairway, Stafford ST16 3TW  
by Friday 5<sup>th</sup> November 2010**



**Standing Advisory Council on Religious Education  
17<sup>th</sup> November 2010**

**Report of the Corporate Director (Children and Lifelong Learning)  
An Analysis of Examination Results for Staffordshire Schools 2010**

**1 Purpose of Report**

To present SACRE members with a statistical analysis of the standards achieved in GCSE (Full Course and Short Course), Advanced Level and Advanced Subsidiary GCE Religious Studies by pupils examined in the summer of 2010.

**2 Summary**

Members of SACRE will receive a graphical analysis of the standards achieved.

**3 Recommendation**

That members of SACRE receive the report.

That letters be sent on behalf of SACRE to identified schools offering congratulations or support as appropriate.

**4 Background**

A statistical analysis of the standards achieved by Staffordshire schools in examinations held in summer 2010 is attached to this report.

Key issues identified in the analysis are as follows:

Overall

- a) In 2010 a total of 6952 students were entered for GCSE RS, either Full or Short Course.
- b) A developing trend is for schools to offer both Full and Short Course in Key Stage 4. 45 out of 55 schools offer the short course, 33 schools offer the full course. 22 schools now offer both examinations.

Full Course GCSE

- a) The number of schools entering pupils for the Full Course has remained relatively steady since 2004, with four county schools entering over 50% of pupils for this examination.
- b) The percentage of pupils attaining grades A\* to C has risen above the national average for 2010 despite falling below the national average last year. The differential is +1.8 percentage points.
- c) Attracting boys to the course continues to be an issue. The number of girls entered has remained steady however there has been a fall in the number of boys entered this year.

Short Course GCSE

- a) 45 out of 55 Staffordshire secondary schools now enter pupils for the Short Course. The number of entries has risen in 2010.
- b) The number of Staffordshire students gaining the higher grades A\* to C continues to be below the national level for both boys and girls, the Staffordshire average being 3.6 percentage points below the national figure.

Teachers and pupils in Staffordshire schools are to be congratulated on their hard work and continued efforts to raise the standard of attainment in the County.

Effective ways to raise standards at all levels are under consideration.

**5 Equal Opportunities**

This report has been prepared in line with the County Council's policy on Equal Opportunities.

## **6 Financial Implications**

There are no financial implications

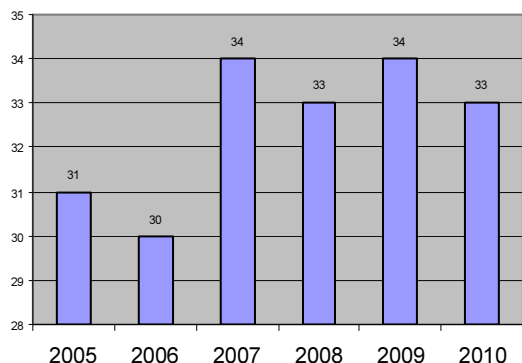
Contact Officer:	Emma Senior
Telephone Number	01785 277997

## Full Course GCSE in Religious Studies Results Analysis 2010

**National Average A\* to C      73.1%**

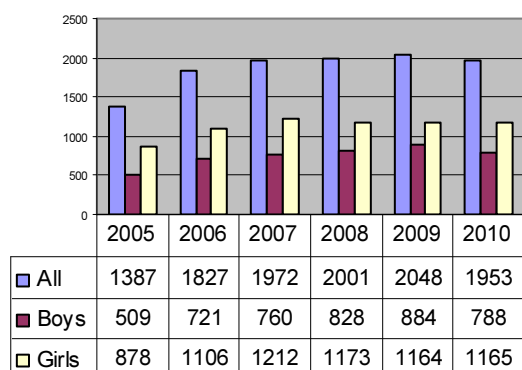
**Staffordshire Average A\* to C   74.9%**

Number of schools entering pupils for GCSE  
Full Course



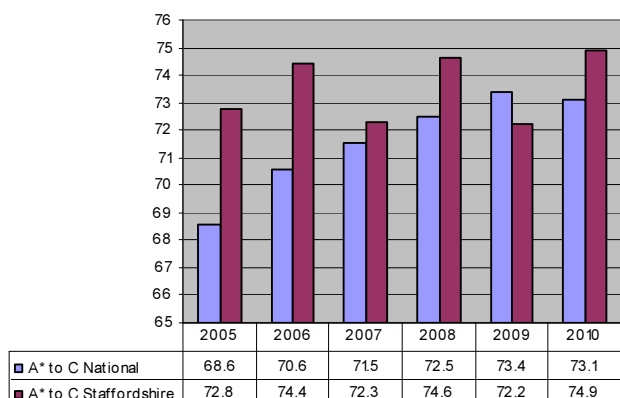
- The number of schools entering pupils for Full Course GCSE fluctuates slightly year on year, and has fallen slightly this year from 34 in 2009 to 33.
- 18 of these schools also enter pupils for Short Course. In some cases this means that all students are offered the opportunity to take an examination appropriate to their commitment and ability. In some only small numbers are catered for, even though both examinations are offered.
- 4 county maintained schools enter more than 50% of students for the full course.

Number of students entered for Full  
Course GCSE



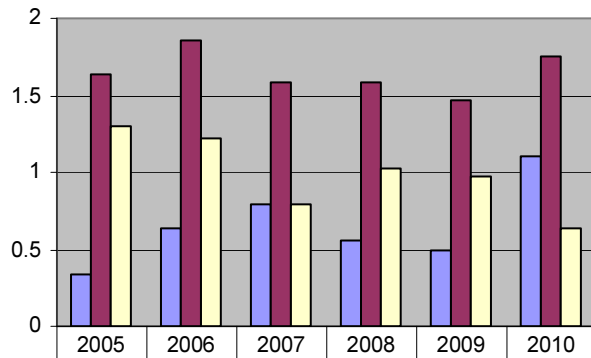
- This year there was a slight fall in the numbers taking the Full Course.
- There was a drop in the number of boys entered in 2010 but the number of girls entered remained steady.
- Some schools are now entering larger groups for the examination, often because they are offering the Full Course option to the more able students who are already following a Short Course. Only 2 schools entered fewer than 10 students, but in 7 schools entries were below 20.

Percentage of students gaining A\* to C grades in  
Full Course



- The percentage of pupils attaining grades A\* to C in Full Course nationally has decreased.
- This year Staffordshire schools have returned to great form bucking the national trend and have performed significantly better than the national average.
- The differential between the national average and the Staffordshire average is 1.8 percentage points.

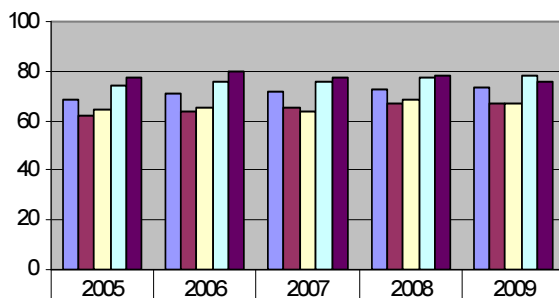
### Student referencing Full Course Comparative Performance



	2005	2006	2007	2008	2009	2010
PR National Difference	0.34	0.64	0.79	0.56	0.49	1.11
PR Staffordshire Difference	1.64	1.86	1.58	1.58	1.47	1.75
Staffs Relative Performance Indicator	1.3	1.22	0.79	1.02	0.98	0.64

- Pupils' grades in all subjects are averaged nationally and compared with the average national achievement for RS. The difference (residual) is calculated. In 2010 the residual for RS nationally is 1.11 points, where 6 points represents a grade.
- The same process is followed for Staffordshire results in all subjects. In 2010 the residual for RS is 1.75.
- This calculation indicates that, in 2010, pupils nationally and on average attain a slightly higher grade in Full Course RS than in the other subjects they take. This trend is matched in Staffordshire.
- Staffordshire pupils' relative performance in RS has been consistently better than the national figure.
- In 2010 Staffordshire pupils' results on average were approximately  $\frac{1}{6}$  of a grade higher than national expectations.

### Attainment by gender Full Course



	2005	2006	2007	2008	2009
A* to C National	68.6	70.6	71.5	72.5	73.4
A* to C Boys National	61.7	63.8	65.4	66.7	67.1
A* to C Boys Staffordshire	64.8	65.6	63.9	68.8	66.9
A* to C Girls National	73.9	75.8	76.2	77.1	78.5
A* to C Girls Staffordshire	77.4	80.2	77.6	78.6	76.2

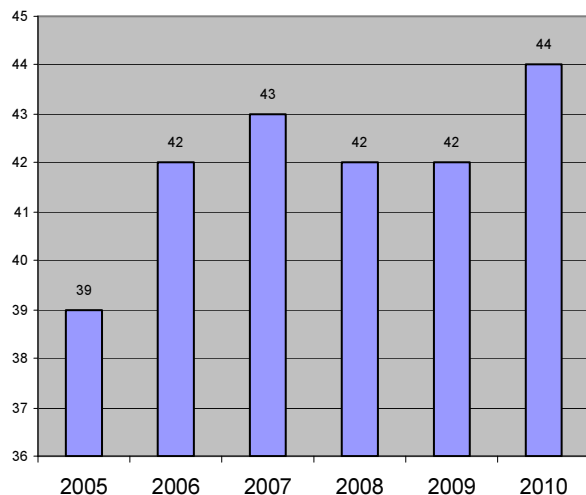
- In 2010, boy's achievement is below the national average for all pupils and slightly below the national average for boys.
- Girls achievement is above the national average for all pupils but slightly below the national average for girls.

## Short Course GCSE in Religious Studies Results Analysis 2010

National Average A\* to C **54.6%**

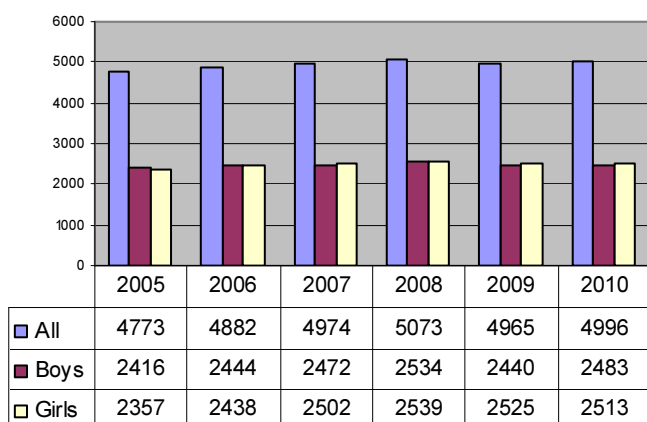
Staffordshire Average A\* to C **51%**

**Number of schools entering students for Short Course GCSE**



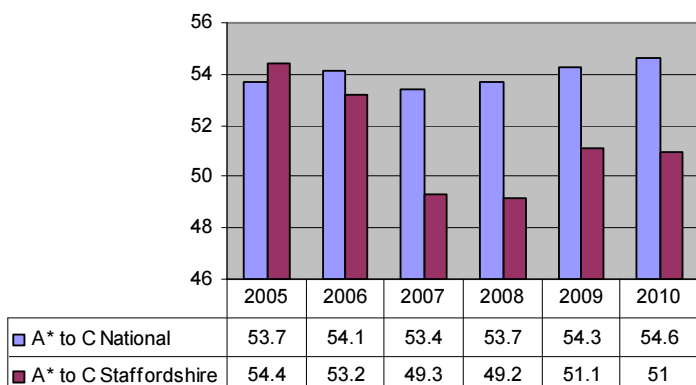
- The number of schools entering students for Short Course RS has remained steady, with only slight variation, since 2006.
- 44 out of Staffordshire's 55 secondary schools entered pupils for the Short Course GCSE in 2010.
- 18 of these schools also enter students for Full Course.

**Number of students entered for Short Course GCSE**



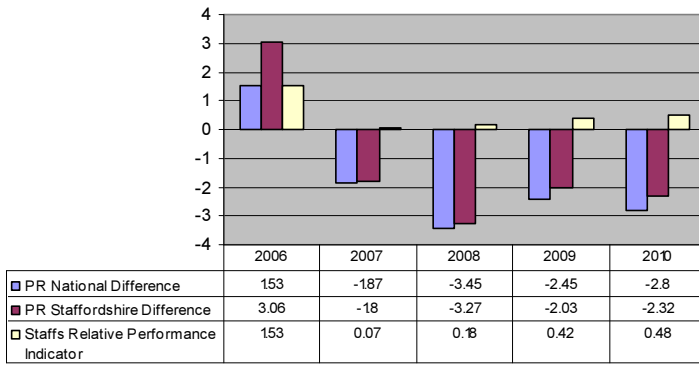
- The number of pupils entered for the Short Course GCSE RS has risen in 2010, although figures have been steady with only slight variation over the last 3 years.
- There is little significant difference between the number of boys entered for the examination and the number of girls.

**Percentage of students gaining A\* to C for Short Course GCSE**



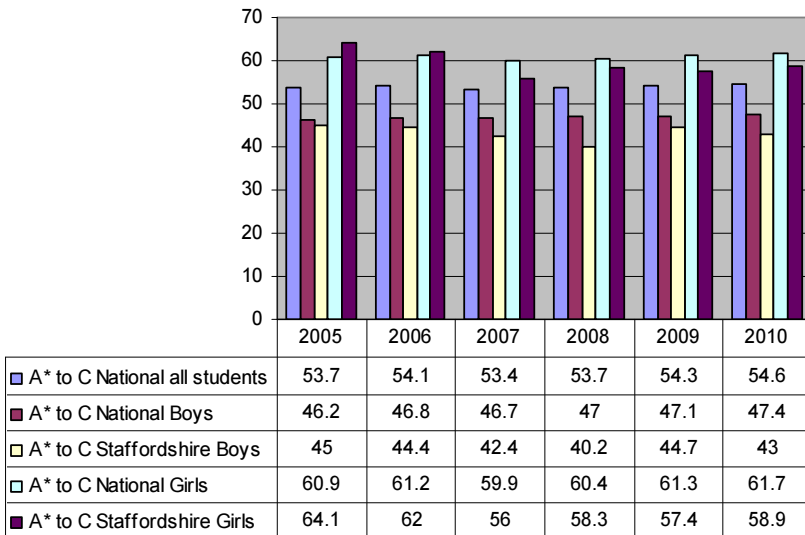
- There has been a slight increase in the national average for 2010 but Staffordshire's average has remained steady.
- The Staffordshire average in 2010 is below the national level by 3.5 percentage points, a slight increase on 2009.
- In general this may be because more schools are entering a higher proportion of more able students for Full Course leaving pupils of a lower average ability to take the Short Course

**Student referencing Short Course GCSE  
Comparative Performance**



- Pupils' grades for all subjects are averaged nationally and compared with the average national achievement for RS. The difference (residual) is calculated. In 2010 the residual for Short Course nationally is -2.8 points.
- This means that, overall, pupils perform slightly lower than the average in short course RS by comparison with the other subjects they take.
- In 2010 the Staffordshire County residual was slightly better than the national at -2.32. This indicates that, on average, Staffordshire students taking Short Course RS attain slightly less than a grade lower than in the other subjects they take.

**Attainment by gender for Short Course GCSE**



- The percentage of girls achieving grades A\* to C is higher than the national average for all pupils but below that for girls in 2010.
- The percentage of boys attaining the higher grades is lower than the national average for all pupils and for Staffordshire boys.



## Staffordshire schools performing well

### GCSE Full Course

School	Board	Entries	Well above national Average A* to C (73.1%)	Well above average mean points for county (42.4)	Significantly positive residual (National 0.06)
Alleyne's High School	AQA	111	96.4	46.8	
Cannock Chase High School	OCR	10	80.0		
Codsall Community High School	OCR	31	100	47.7	
Endon High School	OCR	96	83.3		
John Taylor High School	OCR	77	100	50.4	
NCHS The Science College	AQA	34	91.2		
Paulet High School	EDEXCEL	10	100	50.2	
Queen Elizabeth's Mercian High School	OCR	50	88	47.1	6.68
Sir Graham Balfour High School	EDEXCEL	16	81.3		
Sir Thomas Boughey High School	OCR	6	100	51	
Thomas Alleyne's High School	AQA	55	83.6		
Westwood College	OCR	59	84.7	46.2	
Wilnecote High School	OCR	42	83.3		
Wolstanton High School	OCR	38	92.1	47.6	5.22
Woodhouse Business and Enterprise College	OCR	60	90	48	

## Staffordshire schools causing concern

### GCSE Full Course

School	Board	Entries	Well below national Average A* to C (73.1%)	Well below average mean points for county (42.4)	Significantly negative residual (National 0.06)
Chase Terrace Technology College	OCR	44			-5.28
Chesterton Community Sports College	OCR	10	40		
De Ferrers Specialist Tech. College	OCR	37	35.1		
Kingsmead Technology College	OCR	16	37.5		
Nether Stowe School	OCR	74	35.1		-6.69
Maryhill High School	OCR	34	41.2	34.2	-4.91



## Staffordshire schools performing well

### GCSE Short Course

School	Board	Entries	Well above national average A* to C (54.6)	Well above average points for county (18.0)	Significantly positive residual (National -2.80)
Cannock Chase High School	OCR	129	84.2	22.8	3.48
Cheslyn Hay Sports and Community High School	OCR	204	73.0	20.8	
Clayton Hall Business and Language College	OCR	186	60.8	20.5	
Edgecliff	OCR	114	60.5		
Great Wyrley Performing Arts High School	OCR	180	61.1		
Madeley High School	OCR	108	90.7	23.3	3.43
Ounsdale High School	EDEXCEL	17	100	25.1	2.83
The Friary School	EDEXCEL	210	61.9		
Walton High School	OCR	205	73.2	20.8	
Weston Road High School	OCR	155	72.3	22.5	5.23

## Staffordshire schools causing concern

### GCSE Short Course

School	Board	Entries	Well below national average A* to C (54.6)	Well below average points for county (18.0)	Significantly negative residual (County -2.80)
Blake Valley Technology College	AQA	63	14.3	12.8	
Blyth Bridge High School and Sixth Form					-11.20
Clough Hall Technology College	OCR	46	13.0	13.4	-12.83
Hagley Park Sports College	OCR	125	18.4	13.7	-9.11
Leek High Specialist Tech School	OCR	88	17.0	12.3	
Nether Stowe School	OCR	25	8.0	7.8	-10.49
Stafford Sports College	OCR	47	14.9	14.0	-8.56

Woodhouse Business and Enterprise College	OCR	114	20.2	18.0	
---	-----	-----	------	------	--

### Staffordshire schools performing well

#### AS level

School	Board	Entries	Well above national Average A* to C (70.2)	Well above average points for county (95.29)
John Taylor High School	EDEXCEL	18	72.2	107.5
King Edward VI Lichfield	OCR	14	71.4	103.93
Maryhill High School	EDEXCEL	5	80.0	108.00
Walton High School	EDEXCEL	10	80.0	
Weston Road High School	EDEXCEL	3	100	

### Staffordshire schools performing well

#### A2 level

School	Board	Entries	Well above national Average A* to C (81.0)	Well above average points for county (214.58)
Wolgarston High School		1	100	

**Standing Advisory Council on Religious Education  
17 November 2010  
Report of the Director of Children's Services  
SACRE Budget 2010 - 2011**

**1 Purpose of Report**

1.1 To advise members of SACRE of the current budget position

**2 Summary**

2.1 A breakdown of the SACRE budget for the financial year 2010 - 2011 to date will be presented at the meeting.

**3 Recommendation**

3.1 That members of SACRE receive the report

**4 Background**

4.1 A budget has been made available to support the work of SACRE during the financial year 2010 – 2011 as approved by the Corporate Director (Children and Lifelong Learning).

4.2 An account of the monies spent to date in relation to the budget for 2010-2011 will be presented at the meeting.

4.3 Continuing priorities for the year 2010-2011 include:

Professional development for SACRE members

Support for the Student Council for RE

Development of guidance materials to accompany the 2009 Agreed Syllabus

The SACRE Awards 2010

The SACRE Lecture

**5 Equal Opportunities**

5.1 This report has been prepared in accordance with the County Council's policies on equal opportunities.

**6 Financial implications**

6.1 Financial implications are indicated in the budget account.

**Contact Officer  
Telephone number:**

**Emma Senior  
01785 27799**



## SACRE Budget 2010/2011

Cost Centre EM1100

Expenditure from 01/04/10 to 31/03/11

<b>Allocation</b>	<b>-11920.00</b>	
	<b>-11920.00</b>	
<b><u>Expenditure</u></b>	<b>£</b>	<b>Committed</b>
<b>H Farr Time</b>		
Summer Term SACRE prep	530.00	
Student Council (Summer)	530.00	
Attendance at SACRE (Summer)	298.00	
SACRE Awards	1060.00	
<b>Other</b>		
SACRE AGM	90.00	
Laurie Rosenberg - SACRE Lecture		364.00
SACRE Awards 30/06/10	1467.20	
SACRE Awards Coach - St Lawrence	225.00	
SACRE Award Trophies - S Joseph	38.19	
SACRE 17/05/10	158.00	
	<b>4396.39</b>	<b>364.00</b>
<b>Total</b>	<b>-7523.61</b>	

Updated 27/10/2010

